

RE 27 506/02.03

Replaces: 08.97 and 12.02

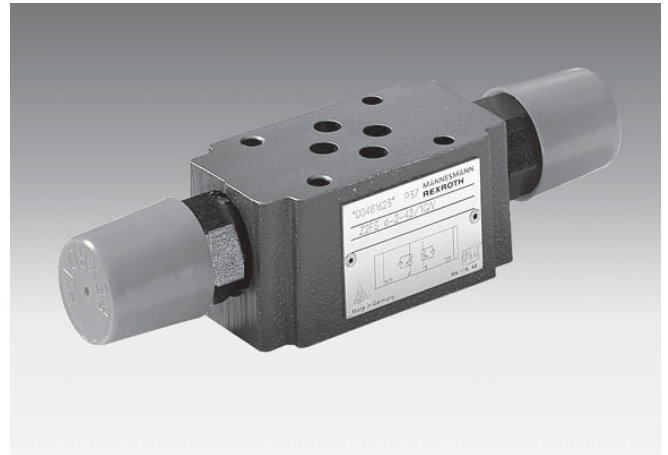
**Double throttle/check valve
Type Z2FS 6**

Nominal size 6

Series 4X

Maximum operating pressure 315 bar

Maximum flow 800 L/min



H/A 5556/96

Type Z2FS 6 –2–4X/...

Overview of contents

Contents	Page
Features	1
Ordering details	2
Preferred types	2
Symbols	2
Function, section	3
Technical data	3
Characteristic curves	4
Unit dimensions	5

Features

- Sandwich plate valve
- Porting pattern to DIN 24 340 Form A, **without** locating pin hole (standard)
- Porting pattern to ISO 4401 and CETOP–RP 121 H, **with** locating pin hole, (ordering detail.../60 at the end of the valve type code)
- 4 adjustment elements:
 - Screw with locknut and protective cap
 - Lockable rotary knob with scale
 - Spindle with internal hexagon and scale
 - Rotary knob with scale
- For limiting the main or pilot flow of 2 actuator connections
- For meter-in or meter-out control



© 2003
by Bosch Rexroth AG, Industrial Hydraulics, D-97813 Lohr am Main

All rights reserved. No part of this document may be reproduced or stored, processed, duplicated or circulated using electronic systems, in any form or by any means, without the prior written authorisation of Bosch Rexroth AG. In the event of contravention of the above provisions, the contravening party is obliged to pay compensation.

Ordering details

Z2FS		6		- 4X/	V		*
Double throttle/check valve							Further details in clear text
Nominal size 6		= 6					No code = Without locating pin hole
Throttle/check valve ports A and B		= - 1)					With locating pin hole
Throttle/check valve port A		= A					
Throttle/check valve port B		= B					
Adjustment element							V = FKM seals (other seals on request)
Screw with locknut and protective cap		= 2					⚠ Attention! The compatibility of the seals and pressure fluid has to be taken into account!
Lockable rotary knob with scale		= 3 2)					
Spindle with internal hexagon and scale		= 5					1Q = With fine control
Rotary knob with scale		= 7					2Q = Standard version
							4X = Series 40 to 49 (40 to 49: unchanged installation and connection dimensions)

- 1) Has the same adjustment elements on ports A and B
- 2) H-key with Material No. **R900008158** is included within the scope of supply
- 3) Locating pin 3 x 8 DIN EN ISO 8752, Material No. **R900005694** (separate order)

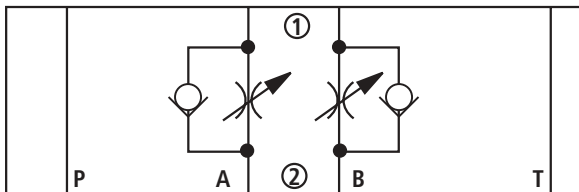
Preferred types (readily available)

Type	Material No.
Z2FS 6 A2-4X/1QV	R900581526
Z2FS 6-A2-4X/2QV	R900439389
Z2FS 6-B2-4X/1QV	R900438760
Z2FS 6-B2-4X/2QV	R900440565
Z2FS 6-2-4X/1QV	R900481623
Z2FS 6-2-4X/2QV	R900481624

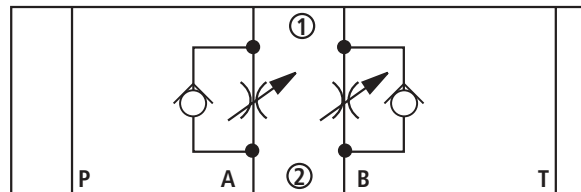
Preferred types and standard components are highlighted in the EPS (Standard Price List).

Symbols ((1) = component side, (2) = subplate side)

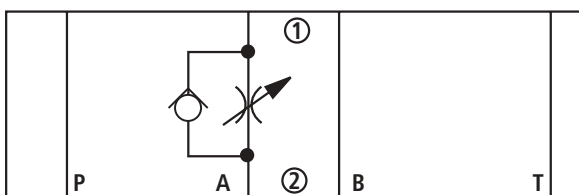
Z2FS 6 -.. -4X/.. (meter-in)



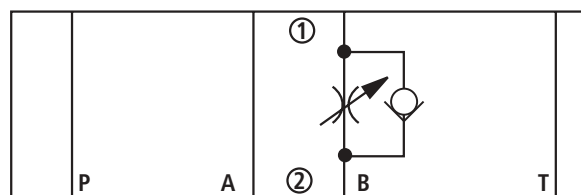
Z2FS 6 -.. -4X/.. (meter-out)



Z2FS 6 A.. -4X/.. (meter-out)



Z2FS 6 B ..-4X/.. (meter-in)



Function, section

Valves type Z2FS 6 are double throttle/check valves of sandwich plate design.

They are used to limit the main or pilot flow of one or two actuators.

Two symmetrically arranged throttle/check valves limit the flow in one direction and allow free-flow in the opposite direction.

For meter-in control fluid passes from port A1 to port A2 via the throttling point (1), which is made up of the valve seat (2) and the throttling spool (3). The throttling spool (3) is axially adjustable via the adjustment screw (4), thus allowing the throttling point (1) to be adjusted.

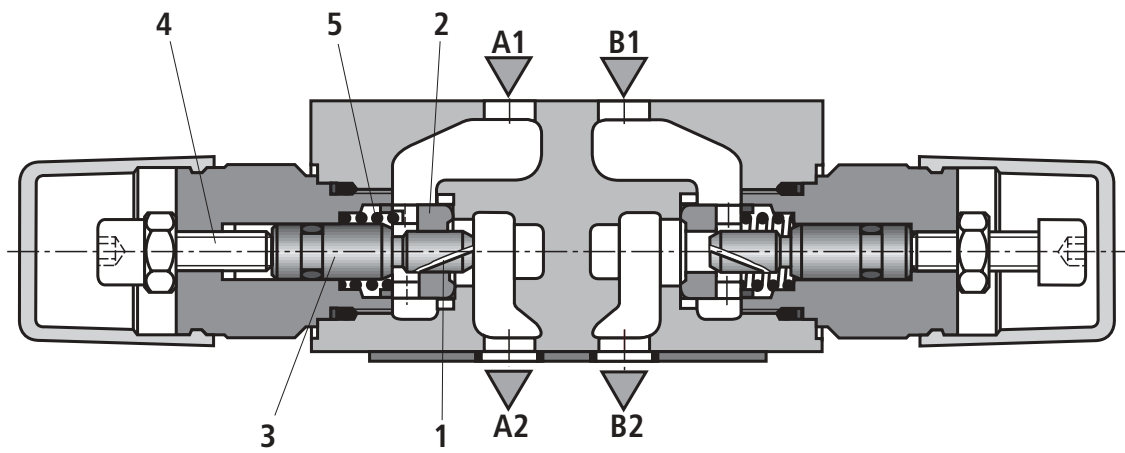
Flow flowing back from the actuator port A2 moves the valve seat (2) against spring (5) in the direction of the throttling spool (3), causing the valve to act as a check valve and allowing free-flow. Depending upon the way in which the valve is installed, the throttling effect can be arranged as a meter-in or meter-out control.

Limiting the main fluid flow (version ..2Q..)

In order to change the velocity of an actuator (main fluid flow), the double throttle/check valve is installed between the directional valve and the subplate.

Limiting the pilot fluid flow (version ..1Q..)

In pilot operated directional control valves, the double throttle/check valve is installed as a pilot choke adjustment (pilot fluid flow). It is fitted between the main valve and the pilot valve.



Type Z2FS 6 –2–4X/... (meter-in)

Technical data (for applications outside these parameters, please consult us!)

General

Installation		Optional
Ambient temperature range	°C	– 20 to + 80
Weight	kg	Approx. 0.8

Hydraulic

Maximum operating pressure	bar	315
Maximum flow	L/min	80
Pressure fluid		Mineral oil (HL, HLP) to DIN 51 524; Fast bio-degradable pressure fluids to VDMA 24 568 (also see RE 90 221); HETG (rape seed oil); HEPG (polyglycols); HEES (synthetic ester); Other pressure fluids on request
Pressure fluid temperature range	°C	– 20 to + 80
Viscosity range	mm ² /s	10 to 800
Cleanliness class to ISO code		Maximum permissible degree of contamination of the pressure fluid is to ISO 4406 (C) class 20/18/15 ¹⁾

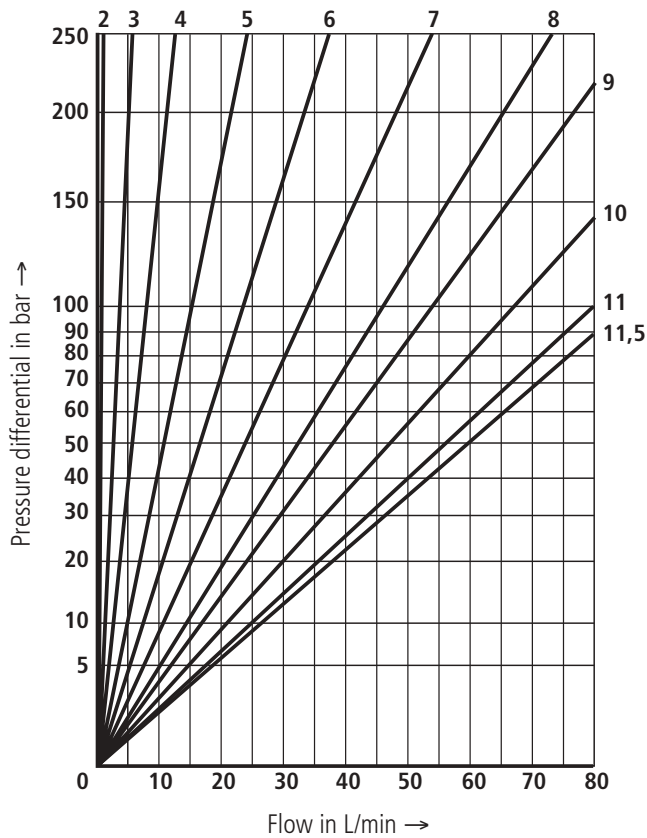
¹⁾ The cleanliness class stated for the components must be adhered to in hydraulic systems.

Effective filtration prevents faults from occurring and at the same time increases the component service life.

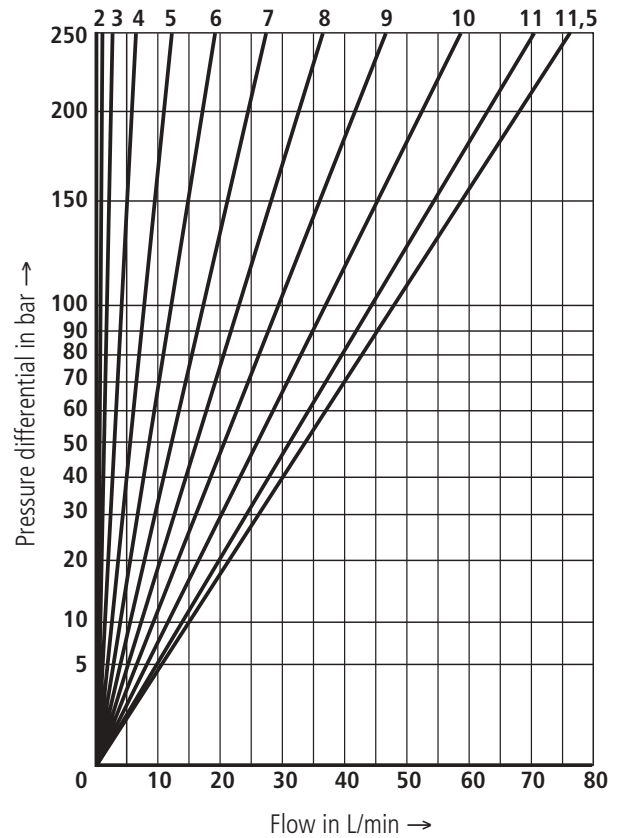
For the selection of filters see catalogue sheets RE 50 070, RE 50 076 and RE 50 081.

Characteristic curves (measured with HLP46, $\vartheta_{oil} = 40 \text{ }^\circ\text{C} \pm 5 \text{ }^\circ\text{C}$)

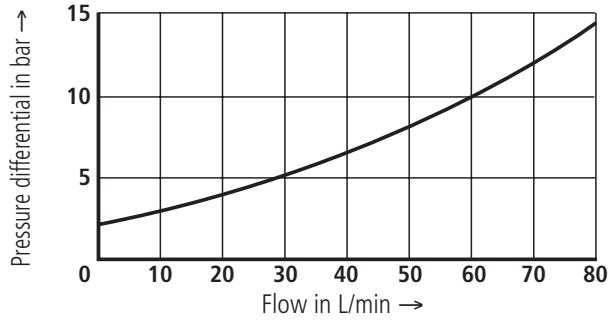
$\Delta p-q_v$ -characteristic curves – Type Z2FS 6 ..-4X/2QV
Throttle setting in turns



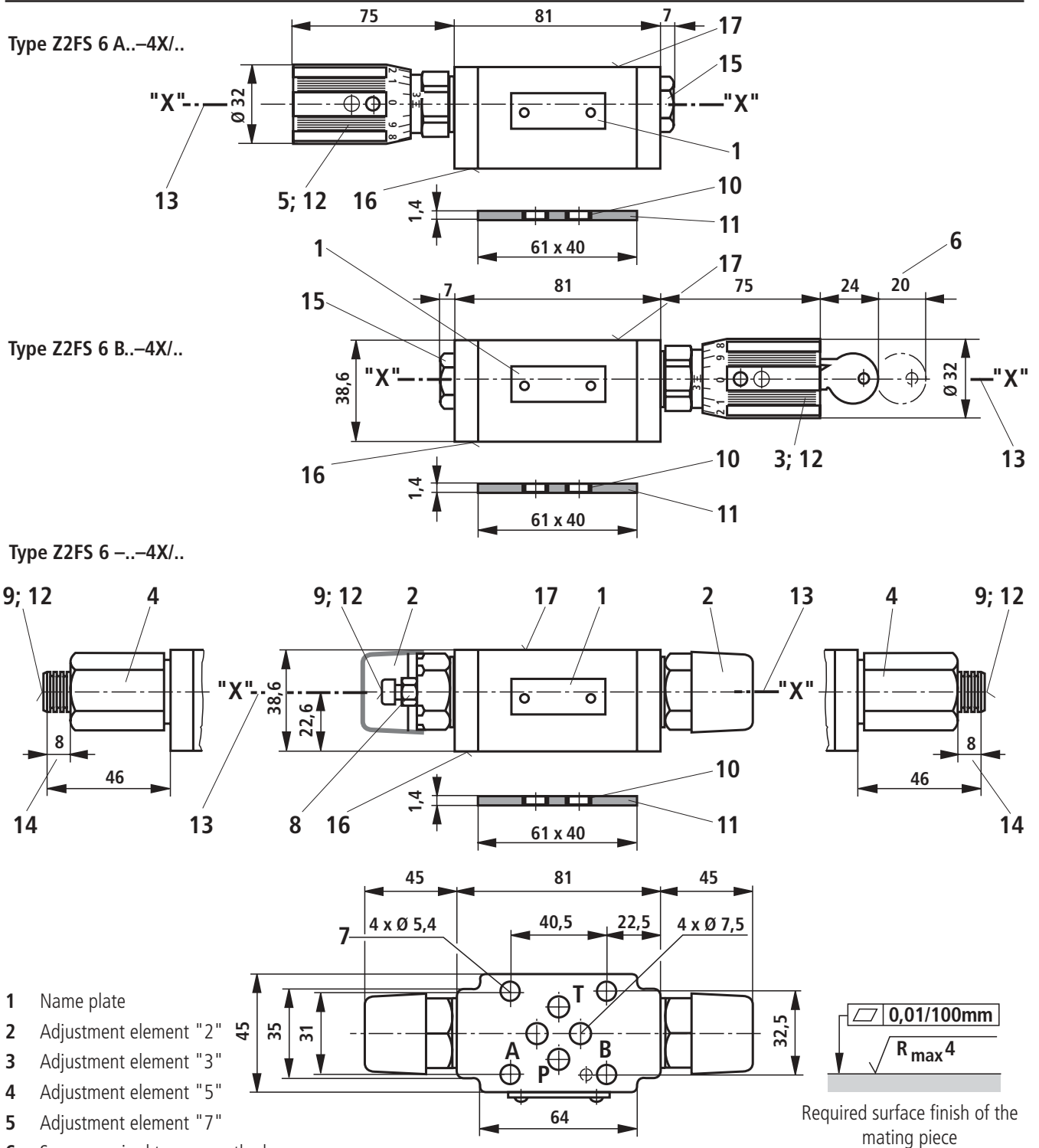
$\Delta p-q_v$ -characteristic curves – Type Z2FS 6 ..-4X/1QV
Throttle setting in turns



$\Delta p-q_v$ -characteristic curves over the check valve (throttle closed)



Unit dimensions (dimensions in mm)



- 1 Name plate
- 2 Adjustment element "2"
- 3 Adjustment element "3"
- 4 Adjustment element "5"
- 5 Adjustment element "7"
- 6 Space required to remove the key
- 7 Valve fixing holes
- 8 Locknut 10A/F
- 9 Adjustment screw/spindle to vary flow cross-section (internal hexagon 5A/F)
- 10 Identical seal rings for ports A, B, P and T
- 11 Seal ring plate
- 12 For all adjustment elements:
Anti-clockwise = increases flow
Clockwise = decreases flow

- 13 To change from meter-in to meter-out, rotate the unit about the „X“ – „X“ axis
- 14 Stroke
- 15 Plug 22A/F

Valve fixing screws
 M5 DIN 912-10.9,
 tightening torque $M_A = 8.9 \text{ Nm}$,
 must be ordered separately

- 16 Porting pattern to ISO 4401 and CETOP-RP 121 H with locating pin hole $\varnothing 3 \times 5 \text{ mm}$ deep for locating pin $\varnothing 3 \times 8 \text{ DIN EN ISO 8752}$, Material No. **R900005694** (separate order)
- 17 Porting pattern to ISO 4401 and CETOP-RP 121 H with locating pin hole $\varnothing 4 \times 4 \text{ mm}$ deep

Bosch Rexroth AG
Industrial Hydraulics

D-97813 Lohr am Main
Zum Eisengießer 1 • D-97816 Lohr am Main
Telefon 0 93 52 / 18-0
Telefax 0 93 52 / 18-23 58 • Telex 6 89 418-0
eMail documentation@boschrexroth.de
Internet www.boschrexroth.de

Bosch Rexroth Limited

Cromwell Road, St Neots,
Cambs, PE19 2ES
Tel: 0 14 80/22 32 56
Fax: 0 14 80/21 90 52
E-mail: info@boschrexroth.co.uk

The data specified above only serves to describe the product. No statements concerning a certain condition or suitability for a certain application can be derived from our information. The details stated do not release you from the responsibility for carrying out your own assessment and verification. It must be remembered that our products are subject to a natural process of wear and ageing.
