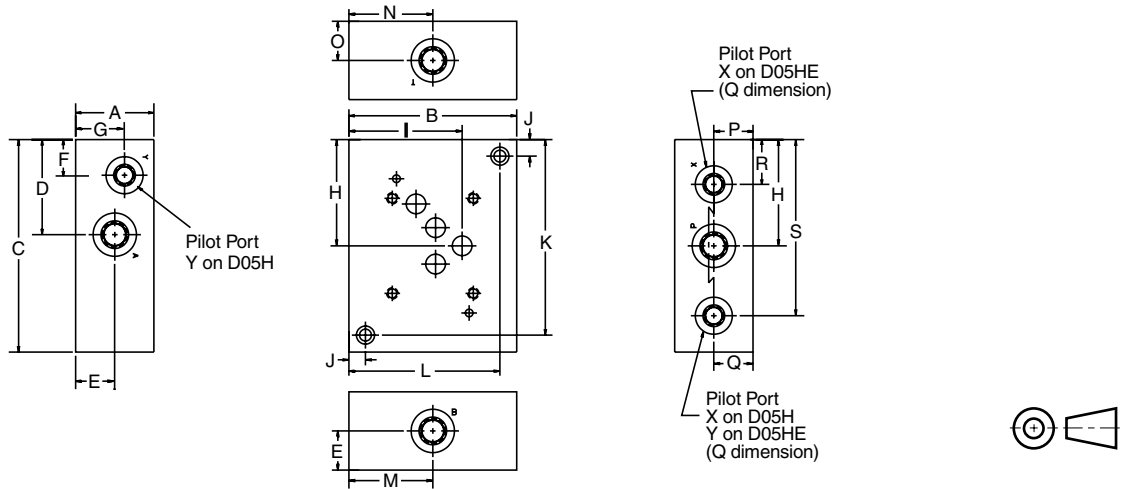
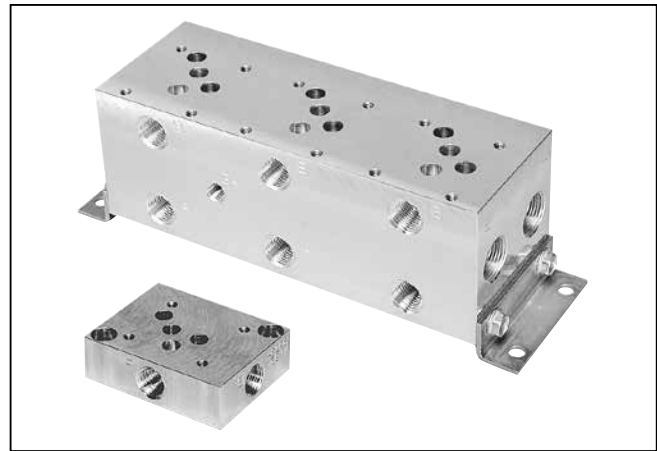


Features

- **Aluminum or steel available** — Flexibility for applying to different system pressures.
- **NPT and SAE thread options available** — Flexibility to plumb into existing systems.
- **Multiple port sizes available** — Eliminates need for reducers and expander at subplate connection.
- **Parallel or series circuit applications** — Flexibility for different circuits.

**Side Ported Subplate —
 NFPA D05, D05H and D05HE**

Inch equivalents for millimeter dimensions are shown in (**)



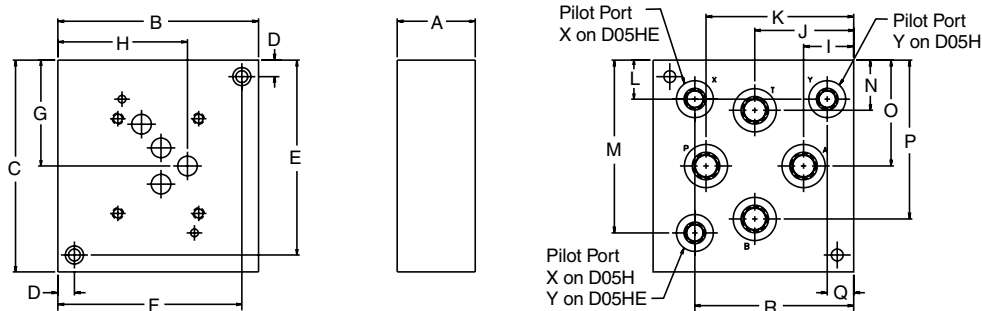
Dimensions	A	B	C	D	E	F*	G*	H	I	J	K	L	M	N	O	P	Q*	R*	S*
SPD31V**A*	44.5 (1.75)	95.3 (3.75)	120.7 (4.75)	54.1 (2.13)	22.4 (0.88)	20.6 (0.81)	22.4 (0.88)	60.2 (2.37)	64.3 (2.53)	9.7 (0.38)	111.0 (4.37)	85.9 (3.38)	47.8 (1.88)	47.8 (1.88)	22.4 (0.88)	22.4 (0.88)	22.4 (0.88)	—	100.1 (3.94)
SPD31D**A*	44.5 (1.75)	95.3 (3.75)	120.7 (4.75)	54.1 (2.13)	22.4 (0.88)	—	—	60.2 (2.37)	64.3 (2.53)	9.7 (0.38)	111.0 (4.37)	85.9 (3.38)	47.8 (1.88)	47.8 (1.88)	22.4 (0.88)	22.4 (0.88)	11.2 (0.44)	25.4 (1.00)	100.1 (3.94)

See Mounting Bolt Kits for bolt information.

* Not available with high flow option.

Bottom Ported Subplate — NFPA D05, D05H and D05HE

Inch equivalents for millimeter dimensions are shown in (**)



Dimension	A	B	C	D	E	F	G	H	I	J	K	L*	M*	N	O	P	Q*	R*
SPD31V***	44.5 (1.75)	114.3 (4.50)	120.7 (4.75)	9.7 (0.38)	111.3 (4.38)	104.9 (4.13)	60.2 (2.37)	73.9 (2.91)	28.4 (1.12)	56.4 (2.22)	84.1 (3.31)	22.4 (0.88)	98.6 (3.88)	28.7 (1.13)	60.5 (2.38)	90.4 (3.56)	15.0 (0.59)	90.4 (3.56)
SPD31D***	44.5 (1.75)	114.3 (4.50)	120.7 (4.75)	9.7 (0.38)	111.3 (4.38)	104.9 (4.13)	60.2 (2.37)	73.9 (2.91)	28.4 (1.12)	56.4 (2.22)	84.1 (3.31)	20.6 (0.81)	100.1 (3.94)	28.7 (1.13)	60.5 (2.38)	90.4 (3.56)	—	88.9 (3.50)

See Mounting Bolt Kits for bolt information.

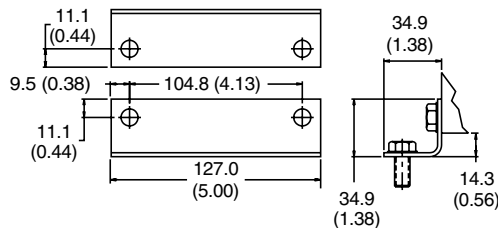
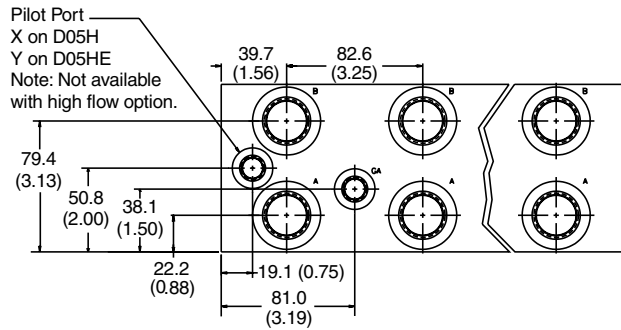
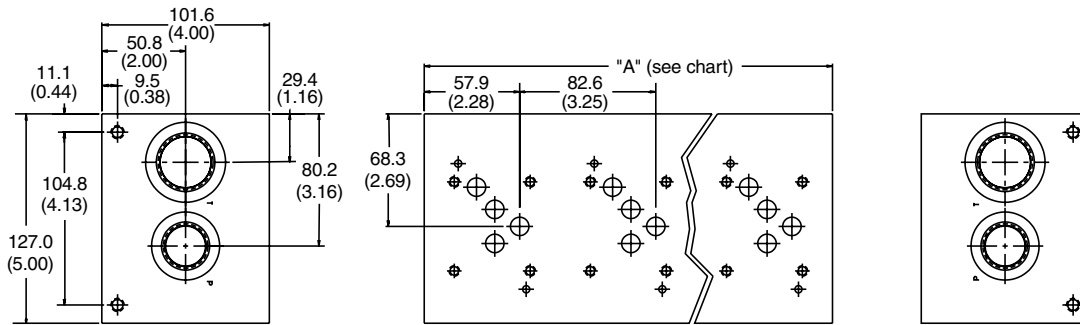
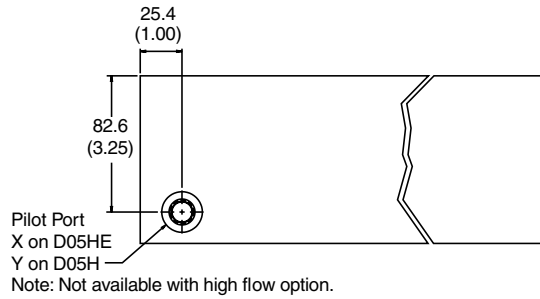
* Not available with high flow option.

Subplate-Manifold.indd, dd

Series D3P and High Flow

Manifold — NFPA D05, D05H and D05HE

Inch equivalents for millimeter dimensions are shown in (**)

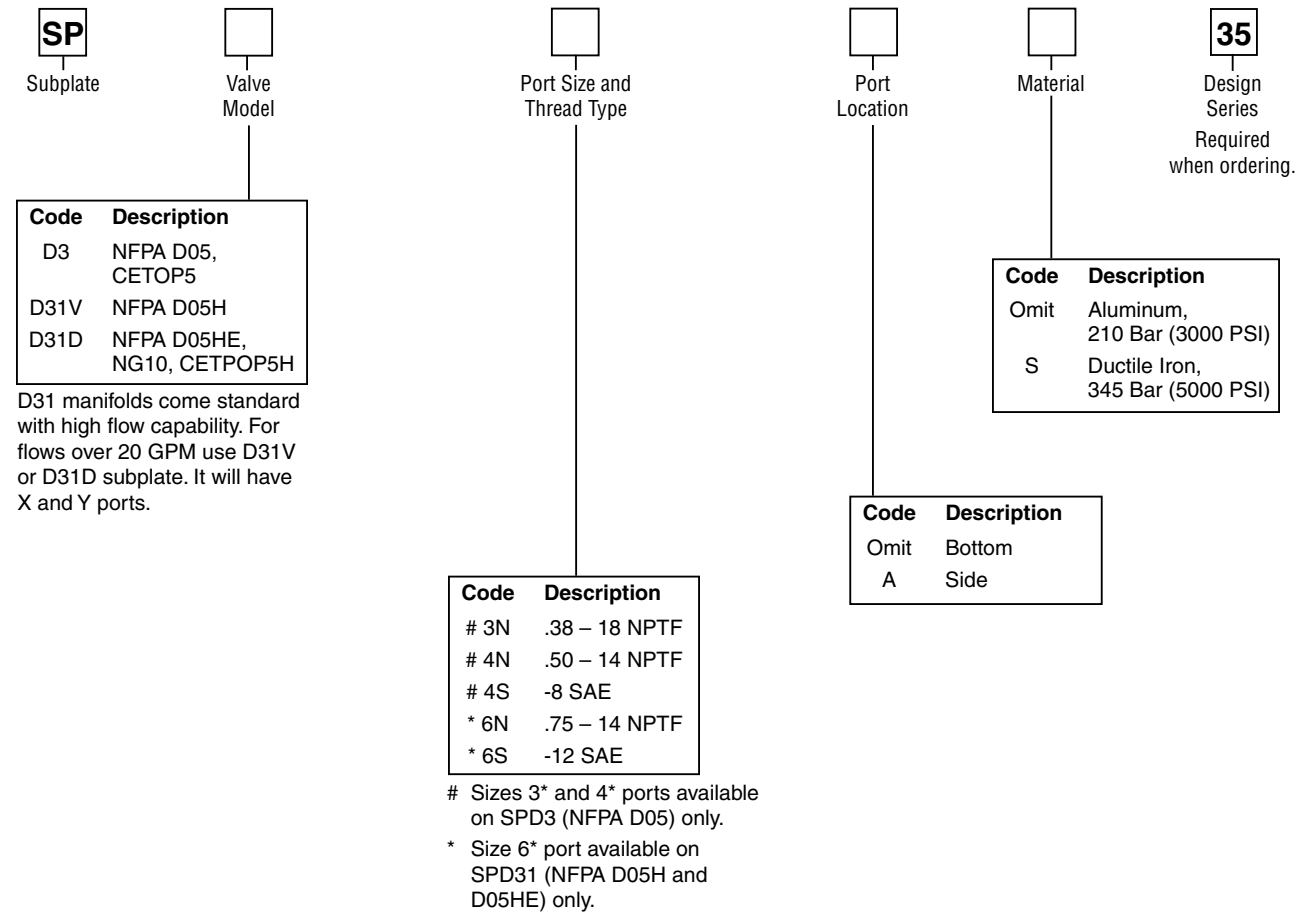


Mounting Hardware
(See Ordering Information for Mounting Hardware details)

No. of Stations	1	2	3	4	5	6
"A" Length mm (inch)	82.6 (3.25)	165.1 (6.50)	247.7 (9.75)	330.2 (13.00)	412.8 (16.25)	495.3 (19.50)
Weight Alum. kg (lbs.)	15.4 (7.00)	26.5 (12.00)	37.5 (17.00)	48.5 (22.00)	59.5 (27.00)	72.8 (33.00)
Weight Iron kg (lbs.)	41.9 (19.00)	83.8 (38.00)	125.7 (57.00)	165.4 (75.00)	187.4 (85.00)	249.2 (113.00)

See Mounting Bolt Kits for bolt information.

Series D3 and D31 Subplates



Mounting Hardware
 supplied with subplate includes:

Subplates	Mounting Hardware	Qty.
SPD33N**	.38-16 UNC x	2
SPD34N**	1.25 LG. SHCS	
SPD34S**		
SPD31*6N**	.38-16 UNC x	2
SPD31*6S**	1.75 LG. SHCS	
SPD3H6N**		
SPD3H6S**		

Valve mounting threads:
 0.25-20 UNC x 0.75 DP.
 Used for SAE and NPTF ports.

Note: 35 Design Series subplates conform to NFPA mounting pattern specifications, but may be dimensionally different from previous design series.

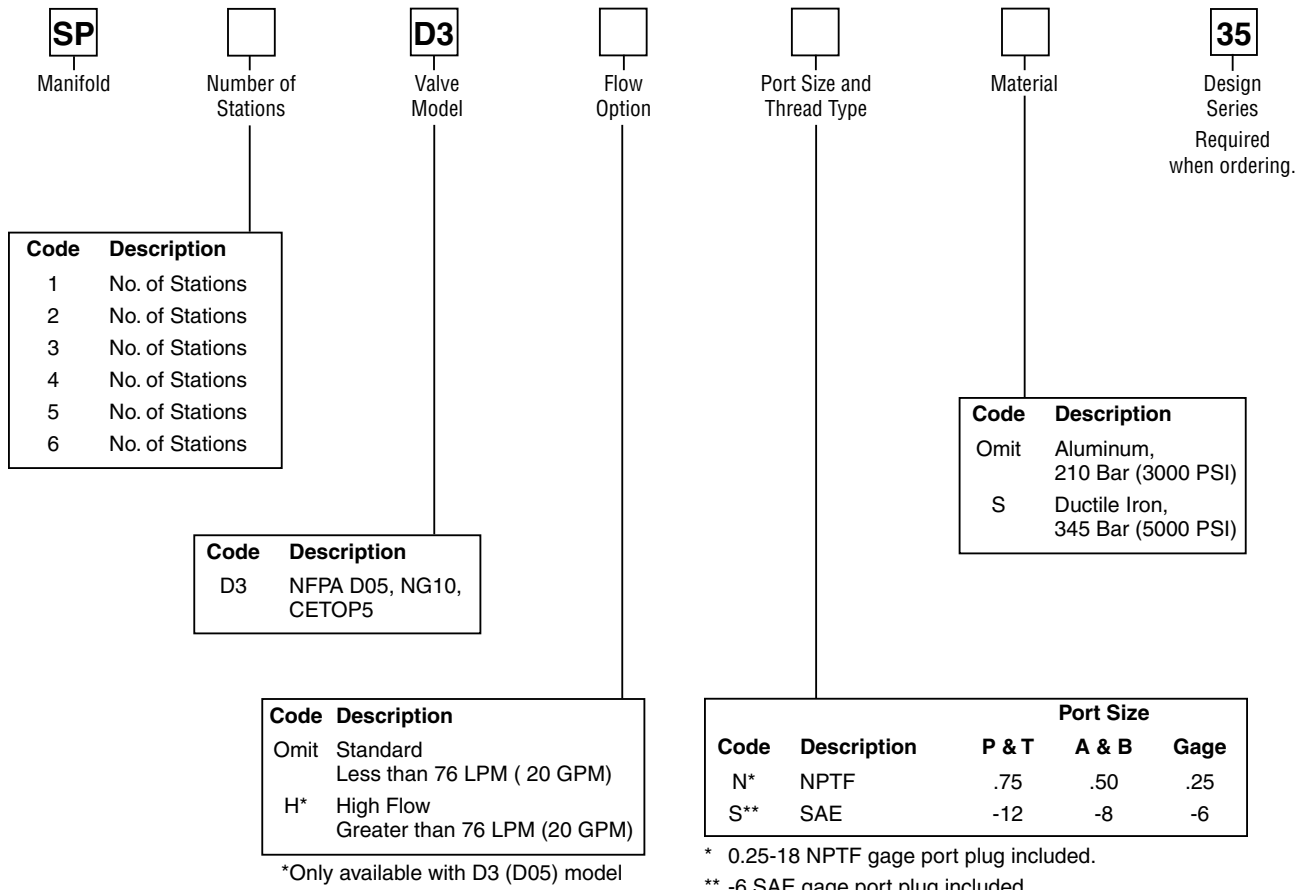
Subplate-Manifold.indd, dd

Mounting Bolt Kits

UNC Bolt Kits for use with D3W, D3, D31VW, D31DW Directional Control Valves & Sandwich Valves				
	Number of Sandwich Valves @2.00" (50mm) thickness			
	0	1	2	3
D3-32, D31VW-91, D31DW-91, D3P	BK98 1.625"	BK141 3.50"	BK142 5.50"	BK143 7.50"
D3-32, D31VW-91, D31DW-91, D3P plus tapping plate	BK166 2.50"	BK167 4.50"	BK168 6.50"	BK169 8.50"

Note: All bolts are SAE grade 8, 1/4-20 UNC-2A thread, torque to 16 N.m. (12 ft.-lbs.)

Series D3 Manifolds



Mounting hardware supplied with manifold includes:
 (2) steel brackets
 For SAE and NPTF ports:
 (8) 5/16-18 UNC x .63 hex washer cap screws

Valve mounting threads:
 0.25-20 UNC x 0.75 DP.
 Used for SAE and NPTF ports.

Note: 35 Design Series manifolds conform to NFPA mounting pattern specifications, but may be dimensionally different from previous design series.

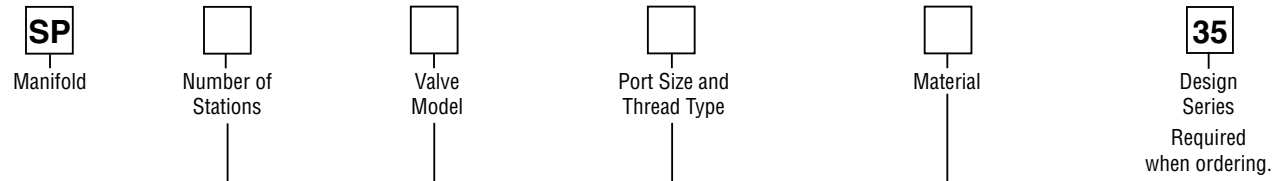
No. Stations	1	2	3	4	5	6
Wgt., Alum, kg (lbs.)	1.8 (4)	3.7 (8)	5.0 (11)	6.4 (14)	7.8 (17)	9.6 (21)
Wgt., Iron, kg (lbs.)	4.1 (9)	7.8 (17)	11.9 (26)	15.6 (34)	19.7 (43)	23.3 (51)

Mounting Bolt Kits

UNC Bolt Kits for use with D3W and D3 Directional Control Valves & Sandwich Valves				
	Number of Sandwich Valves @2.00" (50mm) thickness			
	0	1	2	3
D3-32	BK98 1.625"	BK141 3.50"	BK142 5.50"	BK143 7.50"
D3-32 plus tapping plate	BK166 2.50"	BK167 4.50"	BK168 6.50"	BK169 8.50"

Note: All bolts are SAE grade 8, 1/4-20 UNC-2A thread, torque to 16 N.m. (12 ft.-lbs.)

Series D31 and D3P Manifolds



Code	Description
1	No. of Stations
2	No. of Stations
3	No. of Stations
4	No. of Stations
5	No. of Stations
6	No. of Stations

Code	Description
D31V	NFPA D05H, D3P
D31D	NFPA D05HE, NG10, CETOP5H

D31 manifolds come standard with high flow capability.

Code	Description
Omit	Aluminum, 210 Bar (3000 PSI)
S	Ductile Iron, 345 Bar (5000 PSI)

Code	Description	Port Size			
		P, A, B	T	X, Y	Gage
N*	NPTF	.75	1.00	.38	.25
S**	SAE	-12	-16	-6	-6

* 0.25-18 NPTF gage port plug included.

** -6 SAE gage port plug included.

Mounting hardware supplied with manifold includes:

- (2) steel brackets
- For SAE and NPTF ports:
- (8) 3/8-16 UNC x .88 HHCS
- and (8) .38 SAE N series washers

Valve mounting threads:
 0.25-20 UNC x 0.75 DP.
 Used for SAE and NPTF ports.

Note: 35 Design Series manifolds conform to NFPA mounting pattern specifications, but may be dimensionally different from previous design series.

No. Stations	1	2	3	4	5	6
Wgt., Alum, kg (lbs.)	3.2 (7)	5.5 (12)	7.8 (17)	10.1 (22)	12.3 (27)	15.1 (33)
Wgt., Iron, kg (lbs.)	8.7 (19)	17.4 (38)	26.1 (57)	34.3 (75)	38.9 (85)	51.7 (113)

Mounting Bolt Kits

UNC Bolt Kits for use with D3P, D31VW and D31DW Directional Control Valves & Sandwich Valves (D31V*-91 Design, Solenoid Operated)				
	Number of Sandwich Valves @ 2.00" (50mm) thickness			
	0	1	2	3
D31VW-91, D3P	BK98	BK141	BK142	BK143
D31DW-91	1.625"	3.50"	5.50"	7.50"
D31VW-91, D3P	BK166	BK167	BK168	BK169
D31DW-91 plus tapping plate	2.50"	4.50"	6.50"	8.50"

Note: All bolts are SAE grade 8, 1/4-20 UNC-2A thread, torque to 16 N.m. (12 ft.-lbs.)

