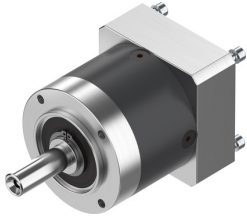


Gearbox EMGA-60-P-G5-SST-57

Part number: 549431

FESTO



Data sheet

Feature	Value
Gearbox flange size	60 mm
Motor flange size	57 mm
Torsional backlash	0.17 deg
Type code	EMGA
Gearbox type	Planetary gear
Gear ratio	5:1
Max. actuator speed	13000 1/min
Gearbox operating temperature	-25 °C ... 90 °C
Degree of protection	IP54
Continuous output torque	22 Nm
Mass moment of inertia, gearbox	0.078 kgcm ²
Max. output torque	35.2 Nm
Max. efficiency	98 %
Torsional rigidity	2.3 Nm/arcmin
Product weight	900 g
Gearbox interface, output shaft	60G
Gearbox interface, actuator	57A
Note on materials	RoHS-compliant