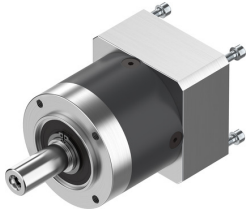


Gearbox EMGA-60-P-G5-EAS-60

Part number: 2297687

FESTO



Data sheet

| Feature | Value |
|---------------------------------|-------------------------|
| Gearbox flange size | 60 mm |
| Motor flange size | 60 mm |
| Torsional backlash | 0.17 deg |
| Type code | EMGA |
| Gearbox type | Planetary gear |
| Gear ratio | 5:1 |
| Max. actuator speed | 13000 1/min |
| Gearbox operating temperature | -25 °C ... 90 °C |
| Degree of protection | IP54 |
| Continuous output torque | 40 Nm |
| Mass moment of inertia, gearbox | 0.078 kgcm ² |
| Max. output torque | 64 Nm |
| Max. efficiency | 98 % |
| Torsional rigidity | 2.3 Nm/arcmin |
| Product weight | 900 g |
| Gearbox interface, output shaft | 60H |
| Gearbox interface, actuator | 60P |
| Note on materials | RoHS-compliant |