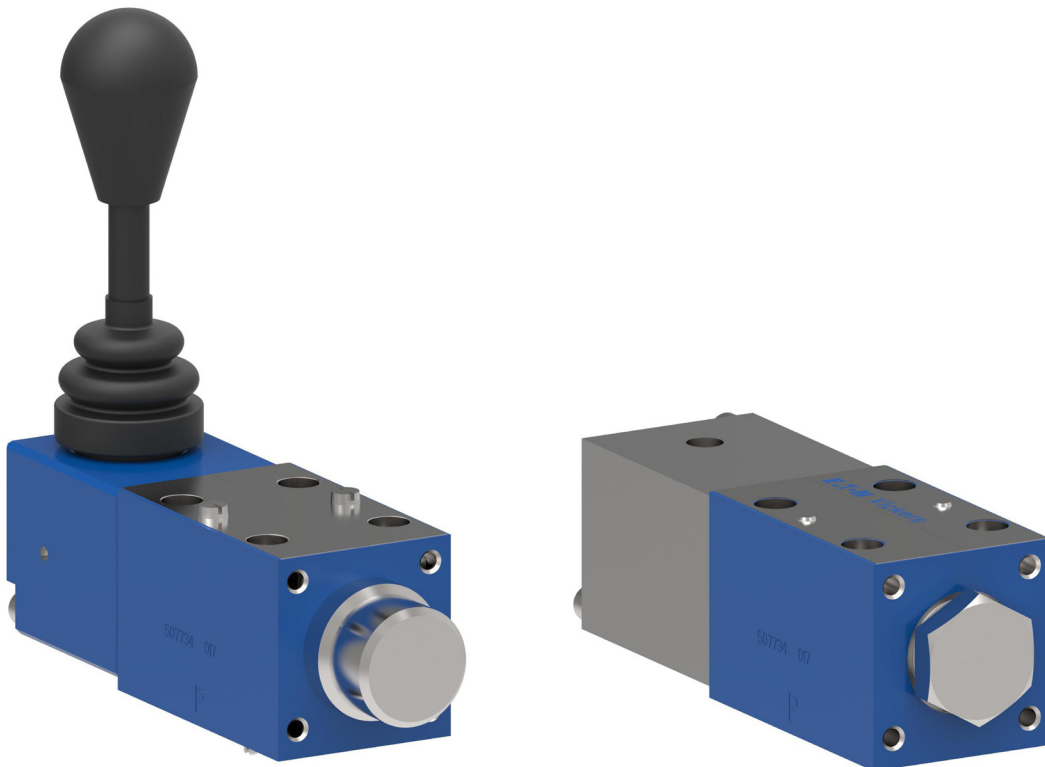


ISO4401 Size D03; ANSI/893.7M-D03
Manual lever/Cam/Plunger operated directional valve
DG3/17/18/20/21-3 60 Design



Manual lever/Cam/Plunger operated directional valve

DG3/17/18/20/21-3 60 Design

II-B

Eaton directional valves offer versatility of application for the many directional control requirements of hydraulic machinery. Ruggedness of design, manufacturing quality, and worldwide parts and service availability maximize uptime, resulting in greater profits for your company.

Manual lever/Cam/Plunger valves

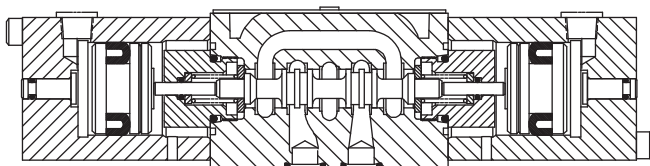
These valves are available in an NFPA D03 interface. These valves are rated at flows to 75 l/min (20 USgpm) and 350 bar (5000 psi) maximum pressure. Roller cam, plunger, spring offset, detented, spring centered, knob or lever operated models are available.

Air operated

Available in an NFPA D03 interface with rated flows to 75 l/min (20 USgpm) and maximum pressure of 350 bar (5000 psi).

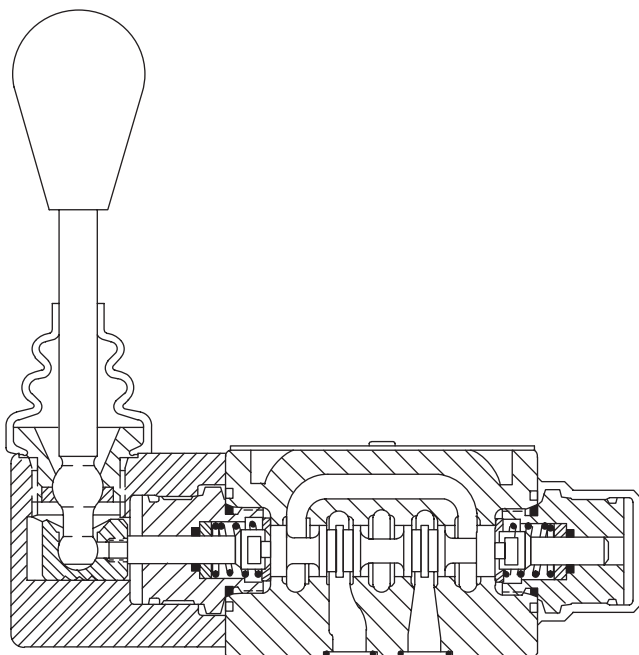
DG18V-3-* -60

Air operator



DG17V-3-* - 60

Lever operator



Hydraulic pilot operated

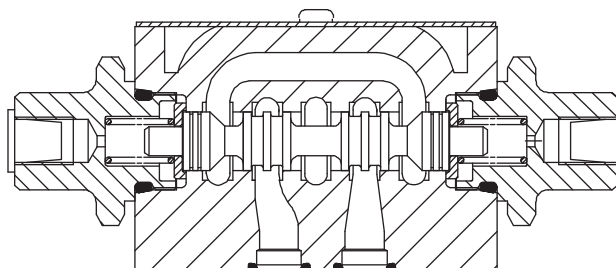
Available in an NFPA D03 interface. Valves are rated at flows to 151 l/min (40 USgpm) and maximum pressure of 350 bar (5000 psi)

Feature and benefits

- High pressure and flow capability for maximum cost-effectiveness
- Low head loss to minimize power loss
- Low-shock characteristics to maximize machine life
- Choice of five types of control to satisfy applications where electrical control is not appropriate

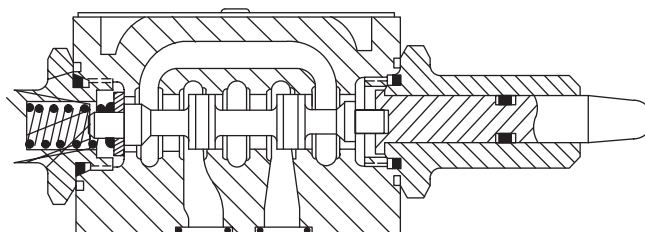
DG3V-3-* -60

Hydraulic operator



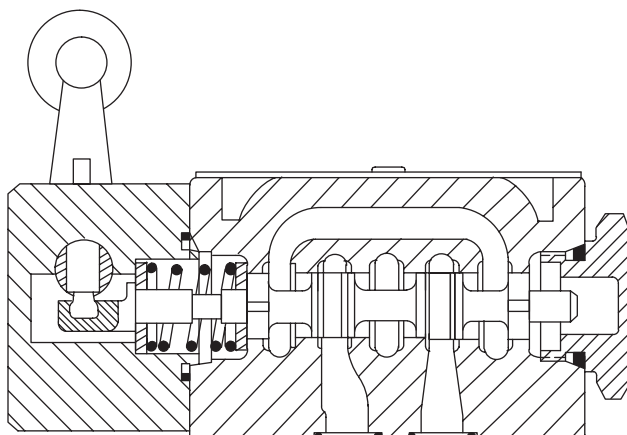
DG21V-3-* - 60

Plunger operator



DG20V-3-* - 60

Cam operator



General description

Five types of valve are available with different controls primarily for controlling the starting, stopping and direction of fluid flow in a system.

The valves are developed from the well-known series of DG4V-3-60 series solenoid operated valves (see Eaton literature # GB-C-2015). These manual valves are available with a choice of up to nine different spool types, depending on valve configuration. All spools have been designed to provide good low-shock characteristics. External regulation of the control input by hydraulic, lever, pneumatic, cam or plunger operation allows matching to virtually any requirement where electrical control is not appropriate. Models include no-spring, spring offset, spring centered and detented versions.

DG3V-3-* -60 Hydraulic operated

The hydraulic operated DG3V-3-* -60 directional valves are used to control the direction of flow in a hydraulic circuit, which would control the movement of a work cylinder or the rotation of a fluid motor.

DG**V-3-* -60 Lever/Cam/ Plunger operated

Operating information

The DG21V-3 plunger operator valves are internally drained to port T. They may be used only when surges or back pressure in the tank line cannot overcome the force applied to depress the plunger.

DG17/20/21 models must be released from actuated positions, without restriction to ensure proper spring return.

Manual lever and cam operations must be released from their actuated positions, without any restrictions to spring return. Cam operated directional control valve installation recommendations:

- Maximum cam angle 35°
- Cam travel for dead band of 9° 30' on either side of center for closed center spools for 35° cam.
- This dead band should be taken into consideration when designing cam and system circuits.
- Cam should not drive roller at its vertical centerline to avoid any side loading on roller lever mechanism.

Actuation force

Under rated conditions*, the approximate actuation force will be as shown in the chart below:

Valve type	Force Nm (lbf.)*
DG17V-3-*A	22 - 31 (5 to 7)
DG17V-3-*C	13 - 22 (3 to 5)
DG17V-3-*N	22 - 31 (5 to 7)
DG17V-3-*A	53 - 62 (12 to 14)
DG17V-3-*C	45 - 53 (10 to 12)
DG17V-3-*A	100 - 250 (22 to 56)

*Tank return must be designed so that transient tank line pressure peaks do not exceed 6,9 bar (100 psi). For tank return line pressure in excess of 6,9 bar (100 psi) lever movement must be assisted.

Note: In right hand assembly, operator "A" is always removed. In left hand assembly, operator "B" is always removed. Please note that European designations are the opposite. See diagram on the nameplate of the valve for operator (port) identification.

DG18V-3-* -60 Air operated

Eaton air operated DG18V-3-* -60 directional control valves come in four basic versions: 3 position spring centered; 2 position detent; 2 position spring offset to port A, B operator; 2 position spring offset to port B, A operator.

Note: Manual actuator in end cap feature (P2) available on single operator models only. In right hand assembly, operator "A" is always removed. In left hand assembly, operator "B" is always removed. See identification plate on top of valve for operator (port) identification.

For every 3,3 bar (50 psi) increase in tank line pressure the air pilot pressure must be increased 0.07 bar (1 psi). Maximum tank line pressure is 100 bar (1450 psi).

Nameplate identification label is asymmetrical and fixes the "A" and "B" operators in relation to the "P" port. Designers should note for installation on vertical panels.

On all right hand models, when operator "A" is pressurized, flow is always P to A. When operator "B" is pressurized, flow is always P to B. Operators "A" and "B" are identified on the identification plate on top of the valve. For left hand assembly this is reversed (P to B when the "A" operator is pressurized).

Shift time

Shift time is essentially dependent upon pilot pressure, line length and diameter, and speed of control mechanism. Spring return time from the offset to center position is approximately 45 msec. at rated flow and pressure assuming minimal back pressure in the pilot line.

Shifting action

Spring centered and spring offset types will be spring positioned unless sufficient pilot pressure is maintained at pilot port to shift and hold the valve spool. No-spring (offered as pilot valves for no-spring detented models only) require only momentary pressurization of pilot port to shift spool (approx. 0.1 seconds). When pilot pressure is relieved, spool will remain in last position attained provided there is no severe shock, vibration or unusual pressure transients.

Note: Surges of oil in a common tank line serving these and other valves can be of sufficient magnitude to cause inadvertent shifting of these valves. This is particularly critical in the no-spring and no-spring detented type valves. Separate tank lines or a vented manifold with a continuous downward path to tank is preferred.

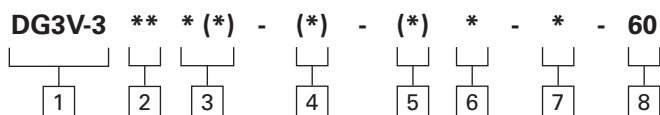
Any sliding spool, if held shifted under pressure for long periods of time, may stick and not spring return due to fluid residue formation (silting) and therefore, should be cycled periodically to prevent this from happening. If this valve is used for purposes other than a 4-way valve or as shown in the graphical symbol on the valve, consult your distributor or sales engineer.

Mounting position

There is no restriction on mounting of spring centered or spring offset models. Detented models must be mounted with the spool bore horizontal to reduce the possibility of accidental spool shift due to shock and/or vibration.

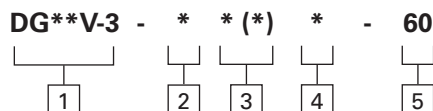
Port connections

Port connections are made by mounting the valve on a manifold or subplate having mounting dimensions which conform to NFPA-D03 (ISO-4401-03) configurations.



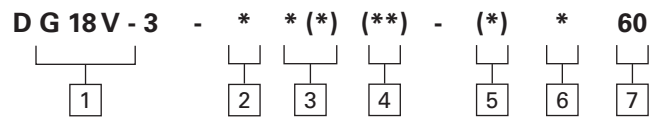
1	Valve type
3	Hydraulically operated
V	350 bar (5000 psi) on P, A & B ports
3	ISO 4401-03 (CETOP 3,NFPA D03) ISO 4401-AB-03-4-B
2	Spool type
	Refer page 18 for spool type
3	Spool spring arrangement
A	Spring offset, end-to-end
AL	Same as "A" but left hand build
B	Spring offset, end to center
BL	Same as "B" but left hand build
C	Spring centered
N	No-spring detent
4	Internal drain
	(omit if not required) A, B & F models only for designs (F models must have internal drain)
T	Internal drain

5	Manual override option
	A, B & F models in non-operator end
P1	Manual override
6	Tank pressure limit
7	210 bar (3000 psi)
7	Thread for pilot/drain connection
B	G1/8 BSP threads
S	SAE threads
8	Design
	Installation dimensions remain as shown for design numbers 60 thru 69.



1	Valve type
*	Operator
	17 - Lever operated
	20 - Roller cam operated
	21 - Plunger operator
V	350 bar (5000 psi) on P, A & B ports
3	ISO 4401-03 (CETOP 3,NFPA D03) ISO 4401-AB-03-4-B
2	Spool type
	Refer page 19 for spool type
3	Spool spring arrangement
A	Spring offset, end-to-end
AL	Same as "A" but left hand build
B	Spring offset, end to center
BL	Same as "B" but left hand build
C	Spring centered
N	No-spring detent

4	Tank port rating
	Omit if not required
2	10 bar max for DG21V only
5	Design
	Installation dimensions remain as shown for design



1

Valve type

- 18** Air Operated
V 350 bar (5000 psi) on P, A & B ports
3 ISO 4401-03 (CETOP 3,NFPA D03)
 ISO 4401-AB-03-4-B

2

Spool type (center condition)

Refer page 19 for spool type

3

Spool spring arrangement

- A** Spring offset to A, (single operator)
AL Spring offset to B, L.H. build (single operator)
B Spring centered, operator A removed
 (single operator)
BL Spring centered, operator B removed
 (single operator)
C Spring centered (dual operator)
N No-spring detented

4

Manual override option

(Applicable for A(L), B(L) & F(L) models only)

- Blank** Overrides in operator end only
P2 Override in both ends of single operators

5

Actuator identity

- Blank** Standard arrangement
 (i.e. apply air to operator A to give flow P to A)
 (Ref. US ANSI B93.9)
V Operator identification determined by position
 of operator (i.e. operator A at A port end of
 valve operator B at B port end of valve)
 Note: Type 8 spool conforms to both methods.
 All type 8 spools must designate V in model
 code.

6

Pilot source thread connections

- B** 1/8" BSP threads

7

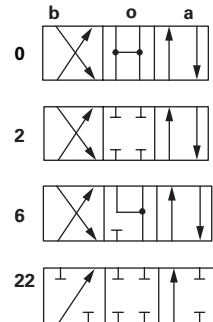
Design

Installation dimensions remain as shown for
design numbers 60 thru 69.

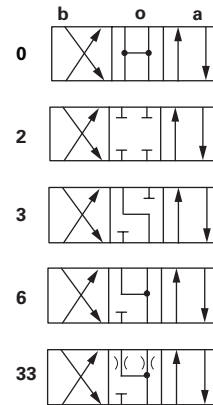
Solenoid identified to US and European standards

II-B

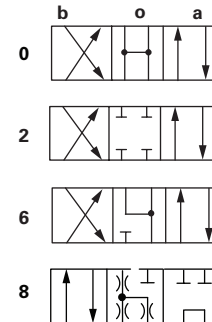
DG3V-3-**A♦



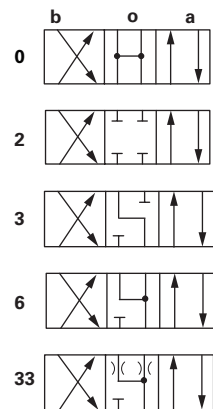
DG3V-3-**B♦



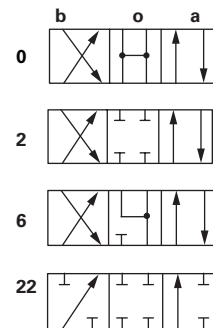
DG3V-3-**C



DG3V-3-**F-T♦

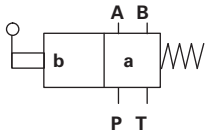


DG3V-3-**N

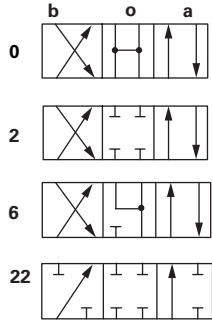


DG17V-3-**A, DG20V-3-**A

Basic valve symbol

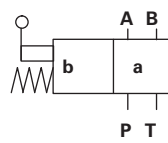


Usable spool options

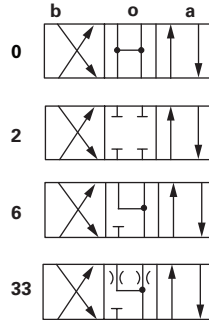


DG20V-3-**A2

Basic valve symbol

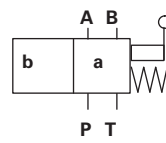


Usable spool options

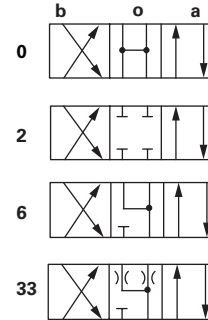


DG20V-3-**A2L

Basic valve symbol

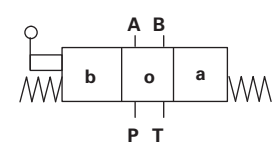


Usable spool options

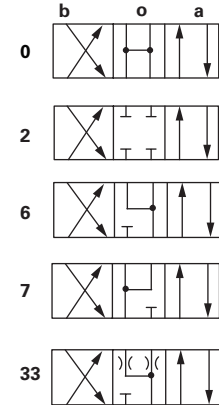


DG17V-3-**C

Basic valve symbol

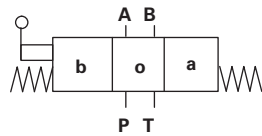


Usable spool options

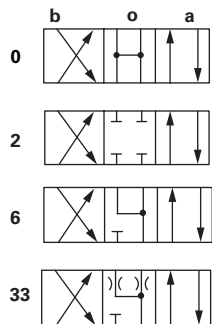


DG20V-3-**C

Basic valve symbol

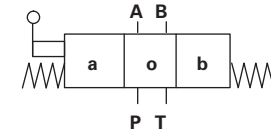


Usable spool options

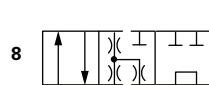


DG17V-3-**8C

Basic valve symbol

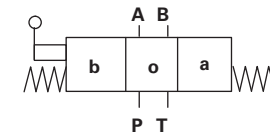


Usable spool options

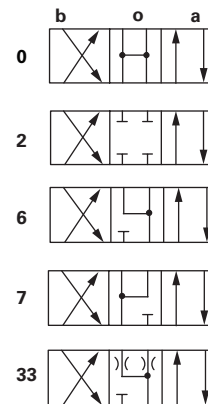


DG17V-3-**N

Basic valve symbol

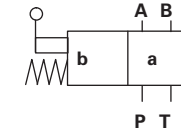


Usable spool options

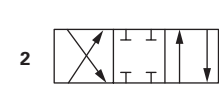


DG21V-3-2A

Basic valve symbol

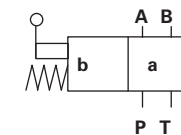


Usable spool options

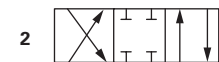


DG21V-3-2AL

Basic valve symbol



Usable spool options



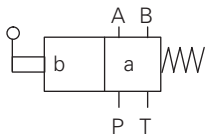
Functional symbols

Spool options for DG18V-3-*-60

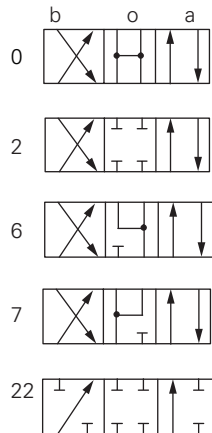
II-B

DG18V-3-**-A

Basic valve symbol

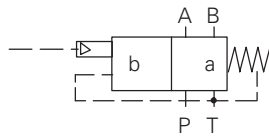


Usable spool options

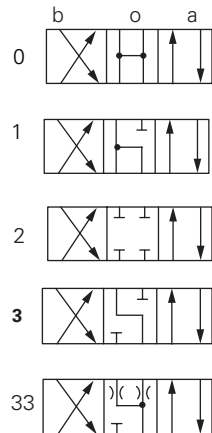


DG18V-3-**-B

Basic valve symbol

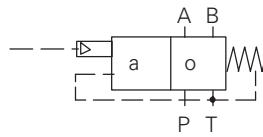


Usable spool options

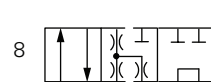


DG18V-3-**-8B

Basic valve symbol

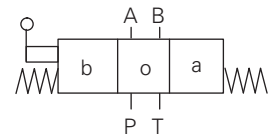


Usable spool options

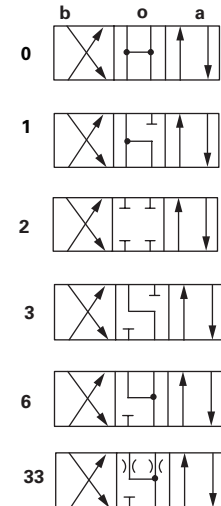


DG18V-3-**-C

Basic valve symbol

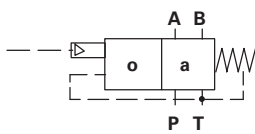


Usable spool options

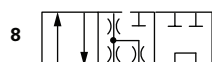


DG18V-3-**-8C

Basic valve symbol

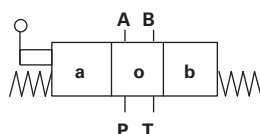


Usable spool options

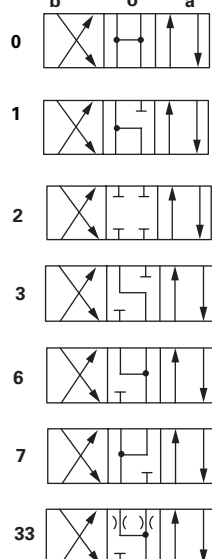


DG18V-3-**-F

Basic valve symbol

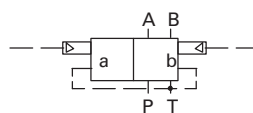


Usable spool options

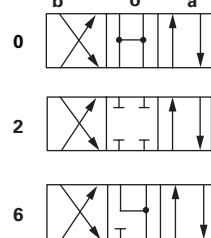


DG18V-3-**-N

Basic valve symbol



Usable spool options



DG3V-3*-60 hydraulic operator

Maximum flow:	See chart on page 21.
Maximum operating pressure:	350 bar (5000 psi)
Maximum tank line pressure:	210 bar (3000 psi)
Minimum pilot pressure:	See chart on page 21.
Recommended fluid viscosity range:	13-54 cSt
Weight:	1,2 kg (2.5 lbs.)
Operating data	
Control (swept) volume(s):	
DG3V-3**A(L) models, end-to-end:	0,8 cm ³ (0.050 in ³)
DG3V-3**B(L)/F(L) models:	
Center-to-end	0,4 cm ³ (0.025 in ³)
DG3V-3**C/N models:	
Center-to-end	0,4 cm ³ (0.025 in ³)
End-to-end	0,8 cm ³ (0.050 in ³)
DG3V-3**(N) no-spring and detented valves require only momentary pilot pressurization to shift spool (in approx. 0.1 seconds). All other models require pilot pressure to be maintained to shift and hold the spool.	

DG17/20/21-3*-60 Lever/Cam/Plunger operator

Maximum flow:	75 l/min (20 USgpm)
Maximum operating pressure:	(A, B & P ports) 350 bar (5000 psi)
Maximum tank line operating pressure:	6,9 bar (100 psi)
Minimum pilot pressure:	100 bar (1450 psi) 10 bar (145 psi) DG21 model only
Recommended viscosity range	14 - 86 cSt (75 - 400 SUS) @ 18°C to 66°C (0°F to 150°F)
Weights:	
DG17V Lever operated	1,8 kg (4.0 lbs)
DG20V Cam operated	1,2 kg (2.5 lbs)
DG21V Plunger operated	1,2 kg (2.5 lbs)

DG18V-3*-60 air operator

Maximum flow:	75 l/min (20 USgpm)
Maximum operating pressure:	(A, B & P ports) 350 bar (5000 psi)
Maximum tank line operating pressure*:	100 bar (1450 psi)
Maximum air pilot pressure:	10 bar (150 psi)
Minimum air pilot pressure:	1,7 bar (25 psi)
Operating temperature range:	-18°C to 66°C (-0°F to 150°F)
Mounting interface:	ISO 4401-03, CETOP 3 (NFPA D03)
Recommended viscosity range:	14 - 86 cSt (75 - 400 SUS)
Weights:	
Dual operator models	1,5 kg (3.4 lbs.)
Single operator models	1,2 kg (2.7 lbs.)

*For every 3,3 bar (50 psi) increase in tank line pressure, the air pilot pressure must be increased 0,07 bar (1 psi).

Operating data

Control (swept) volume(s):	
DG18V-3*A(L) end-to-end	3,6 cm ³ (0.219 in ³)
DG 18V3*B(L)/F(L) center -to-end	1,8 cm ³ (0.109 in ³)
DG3V-3*C/N center-to-end	1,8 cm ³ (0.109 in ³)
End-to-end	3,6 cm ³ (0.219 in ³)

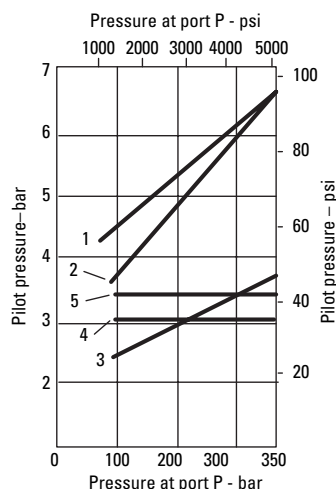
Performance data

DG3V-3-*A(L)

Pilot pressure requirements

II-B

The spools require the minimum pilot pressures shown in the graph below to overcome the spring force and any flow forces. Some spools are limited by the ability to spring return the valve. Minimum pilot pressure required at a flow rate of 20 l/min (5.5 USgpm):

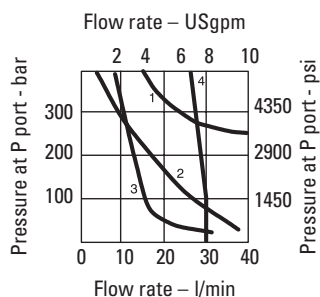


Spool/Spring	Curve
0A(L)	1
0C	3
0F(L)	3
2A(L)	1
2C	1
2F(L)	4
6A(L)	1
6C	1
6F(L)	4
22A	5
33C	2

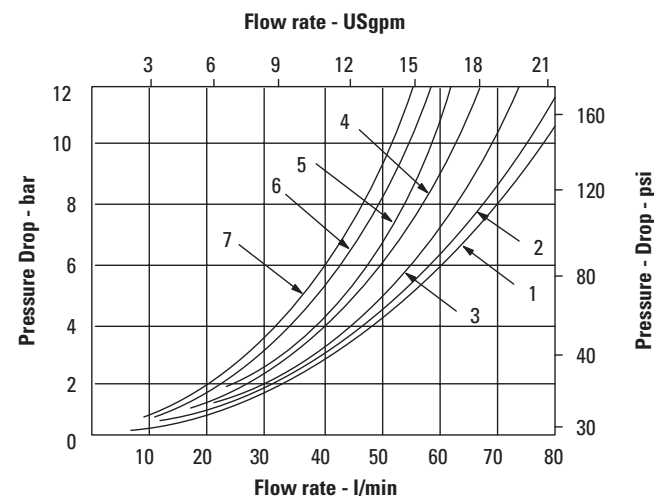
Maximum flow rates

Some spools are limited in the conditions they will operate without reliability problems. These are the single ended spools which must operate within limits outlined in the graph below.

Spool malfunction limits



Pressure drop curves



Pressure drop characteristics

The pressure drop curves give approximate pressure drop ΔP when passing 21 cSt (100 SUS) fluid(s) having .87 specific gravity. For any other viscosity the pressure drop ΔP will change as follows:

cSt (SUS)	14 (75)	32 (150)	43 (200)	54 (250)	65 (300)	76 (350)	86 (400)
% of ΔP (Approx.)	93	111	119	126	132	137	141

For any other specific gravity (G_1) * the pressure drop P will be approximately: $\Delta P_1 = \Delta P(G_1/G)$

* Specific gravity of fluid may be obtained from its producer. Fire-resistant fluids have higher specific gravities than oil.

Spool/spring	Curve
0A(L)	1
2A(L)	2
6A(L)	3
22A(L)	4

Note: For spool types 3 and 6; not recommended for flows in excess of 60 l/min (15.8 USgpm).

Spool/Spring	P to A	A to T	P to B	A to T	P to T	Max flow l/min (USgpm) @ 350 bar (5000 psi)
0	4	2	4	2	4 ▼	38 (10)
0A	5	2	5	2	4 ▼	■
0B, 0C, 0F	4	2	4	2	4	38 (10)
0N	3	7	3	7	4 ▼	38 (10)
2	5	2	5	2	—	38 (10)
2A	6	5	6	5	—	■
2B, 2C, 2F	5	2	5	2	—	38 (10)
2N	6	3	6	3	—	38 (10)
3B, 3C, 3F	6	3	6	1	—	38 (10)
6	6	1	6	1	—	38 (10)
6A	5	7	5	7	—	■
6B, 6C, 6F	6	1	6	1	—	38 (10)
6N	7	1	7	1	—	38 (10)
22A	6	—	6	—	—	■
33B, 33C, 33F	5	2	5	2	▲	38 (10)

▲ Type "33" spool at center will pass approx. 20 l/min (5.3 USgpm) at 124 bar (1800 psi) pressure drop from port A or B (the other being plugged) to T.

▼ Transient condition.

■ See graph above, Max. Flow Rates.

The pressure drop curves give approximate pressure drop ΔP when passing 36 cSt (100 SUS) fluid(s) having .87 specific gravity.

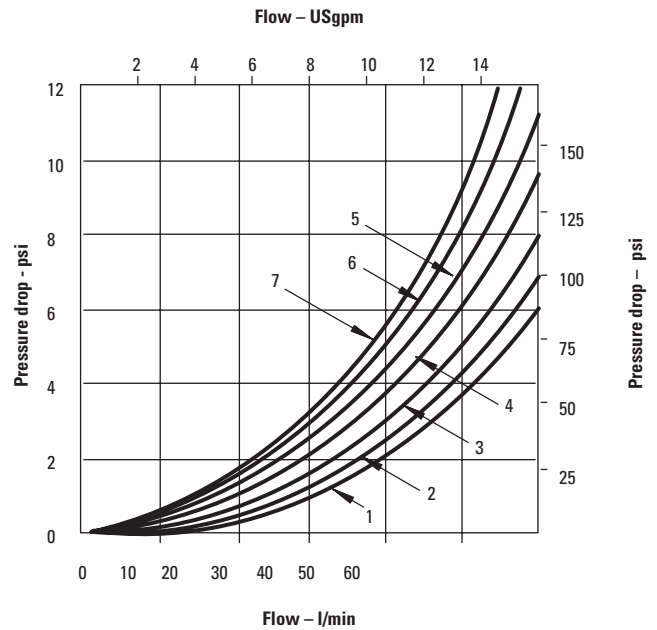
For any other viscosity the pressure drop ΔP will change as follows:

Viscosity

cSt (SUS)	14 (75)	32 (150)	43 (200)	54 (250)	65 (300)	76 (350)	86 (400)
% of ΔP (Approx.)	93	111	119	126	132	137	141

For any other specific gravity (G_1)* the pressure drop ΔP will be approximately: $\Delta P_1 = \Delta P (G_1 / G)$

* Specific gravity of fluid may be obtained from its producer.



II-B

		Pressure drop curve reference chart					Maximum flow @ 350 bar (5000 psi)
		P→A	B→T	P→B	A→T	P→T @center	
DG17V-3-**-60							
	"0C"	4	2	4	2	4	75 l/min (20 USgpm)
	"2C"	5	2	5	2	—	
	"6C"	6	1	6	1	—	
	"7C"	4	3	4	3	—	
	"33C"	5	2	5	2	**	
	"0A"	5	2	5	2	—	
	"2A"	6	5	6	5	—	
	"6A"	5	7	5	7	—	55 l/min (15 USgpm)
	"22A"	6	—	6	—	—	
	"0N"	4	2	4	2	4	75 l/min (20 USgpm)
	"2N"	5	2	5	2	—	
	"6N"	6	1	6	1	—	55 l/min (15 USgpm)
	"7N"	4	3	4	3	—	38 l/min (10 USgpm)
	"33N"	5	2	5	2	**	

**Note type "33" spool at center will pass approximately 20 l/min. (5.3 USgpm) at 124 bar (1798 psi) inlet pressure.

Performance data

DG20/21V-3

II-B

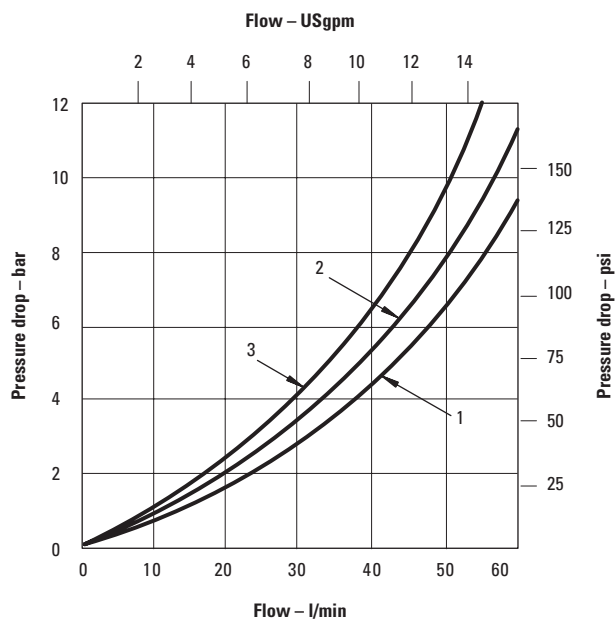
The pressure drop curves give approximate pressure drop ΔP when passing 36 cSt (100 SUS) fluid(s) having .87 specific gravity.

For any other viscosity the pressure drop ΔP will change as follows:

cSt (SUS)	14 (75)	32 (150)	43 (200)	54 (250)	65 (300)	76 (350)	86 (400)
% of ΔP (Approx.)	93	111	119	126	132	137	141

For any other specific gravity (G_1)* the pressure drop ΔP will be approximately: $\Delta P_1 = \Delta P (G_1 / G)$

* Specific gravity of fluid may be obtained from its producer.



DG20/21V-3-**-60	Pressure drop curve - reference chart					Maximum flow @ 350 bar (5000 psi)
	P→A	B→T	P→B	A→T	P→T @center	
"0C"	2	2	2	2	2	75 l/min (20 USgpm)
"2C"	2	3	2	3	—	
"6C"	3	1	3	1	—	
"33C"	2	2	2	2	**	38 l/min (10 USgpm)
"0A"	2	2	2	2	—	
"2A"	2	3	2	3	—	
"33A"	2	2	2	2	—	19 l/min (5 USgpm)
"6A"	3	1	3	1	—	

**Note type "33" spool at center will pass approximately 20 l/min. (5.3 USgpm) at 124 bar (1798 psi) inlet pressure..

DG18V-3-**-60

Maximum flow without malfunction @350 bar (5000 psi) in l/min (USgpm)

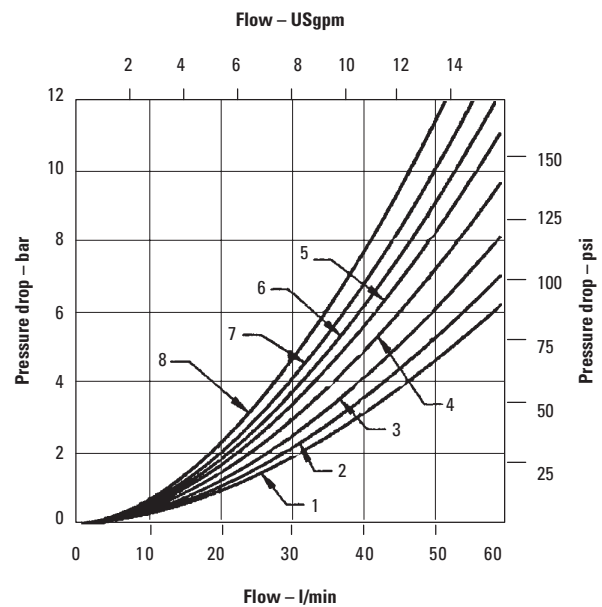
Valve type	"0"	"1"	"2"	"3"	"6"	"7"	"8"	"33"
	—	—	15 (4)	—	—	—	—	—
	57 (15)	—	57 (15)	—	30 (8)	26 (7)	—	—
	76 (20)	19 (5)	57 (15)	76* (20)	26 (7)	57 (15)	38 (10)	57* (15)
	76 (20)	19 (5)	57 (15)	76* (20)	26 (7)	57 (15)	38 (10)	57* (15)
	76 (20)	19 (5)	57 (15)	76* (20)	26 (7)	57 (15)	—	57* (15)
	53 (14)	76 (20)	45 (12)	—	—	—	—	—

**Note type "33" spool at center will pass approximately 20 l/min. (5.3 USgpm) at 124 bar (1798 psi) inlet pressure.

Pressure drop curve reference chart

Spool type	P-A	B-T	P-B	A-T	P-T @center
	4	2	4	2	4
	5	3	5	3	6
	5	2	5	2	-
	6	3	6	1	-
	6	1	6	1	-
	4	3	4	3	-
	6	2	5	2	**
"0A"	5	2	5	2	—
"2A"	6	5	6	5	—
"6A"	5	7	5	7	—
"22A"	6	—	6	—	—
"0N"	3	7	3	7	—
"2N"	6	3	6	3	—
"6N"	7	1	7	1	—

** NOTE: Type "33" spool at center, will approximately pass 20 l/min. (5.3 USgpm) at 124 bar (1798 psi) inlet pressure.



The pressure drop curves give approximate pressure drop ΔP when passing 36 cSt (100 SUS) fluid(s) having a specific gravity of .87.

For any other viscosity the pressure drop ΔP will change as follows:

Viscosity

cSt (SUS)	14 (75)	32 (150)	43 (200)	54 (250)	65 (300)	76 (350)	86 (400)
% of ΔP (Approx.)	93	111	119	126	132	137	141

For any other specific gravity (G_1)* the pressure drop ΔP will be approximately: $\Delta P_1 = \Delta P (G_1 / G)$

* Specific gravity of fluid may be obtained from its producer.

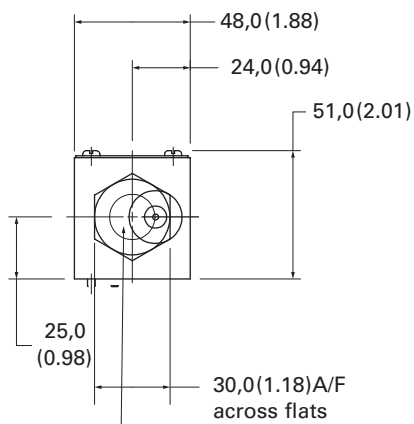
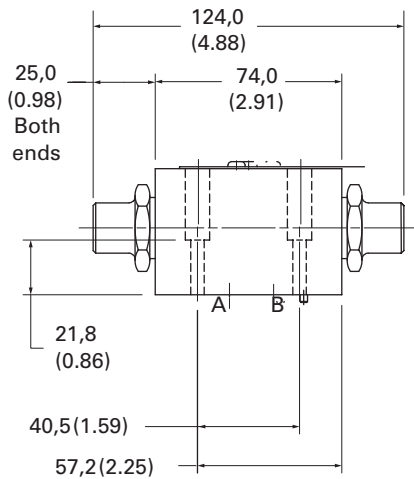
Installation dimensions

DG3V-3-* -60

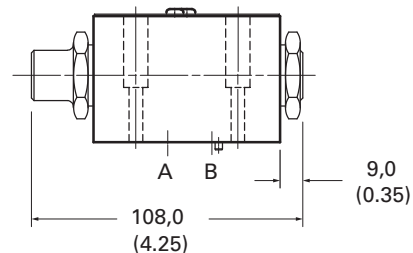
DG3V-3-* -60 Hydraulic operated

II-B

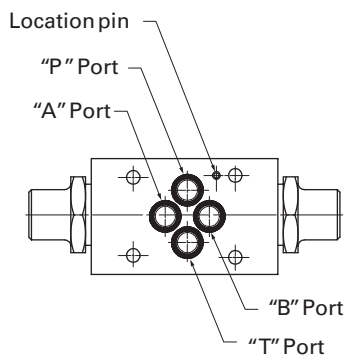
Millimeters (inches)



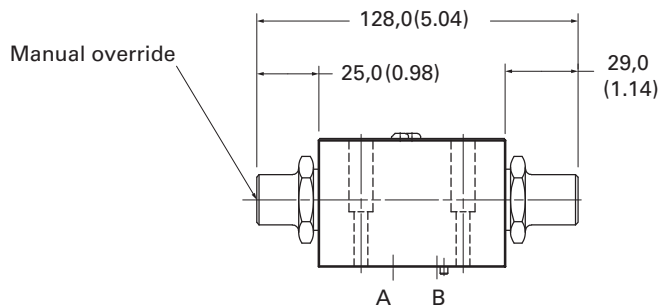
Pilot/drain connection
B – G1/8 thread
S – SAE straight thread
(7/16"– 20 UNF)



DG3V-3-**-T-7-* -60
DG3V-3-**-T-7-* -60
DG3V-3-**-T-7-* -60



DG3V-3-**-L-7-* -60
DG3V-3-**-A(L)-7-* -60
DG3V-3-**-B(L)-7-* -60
DG3V-3-**-C-7-* -60
DG3V-3-**-N-7-* -60

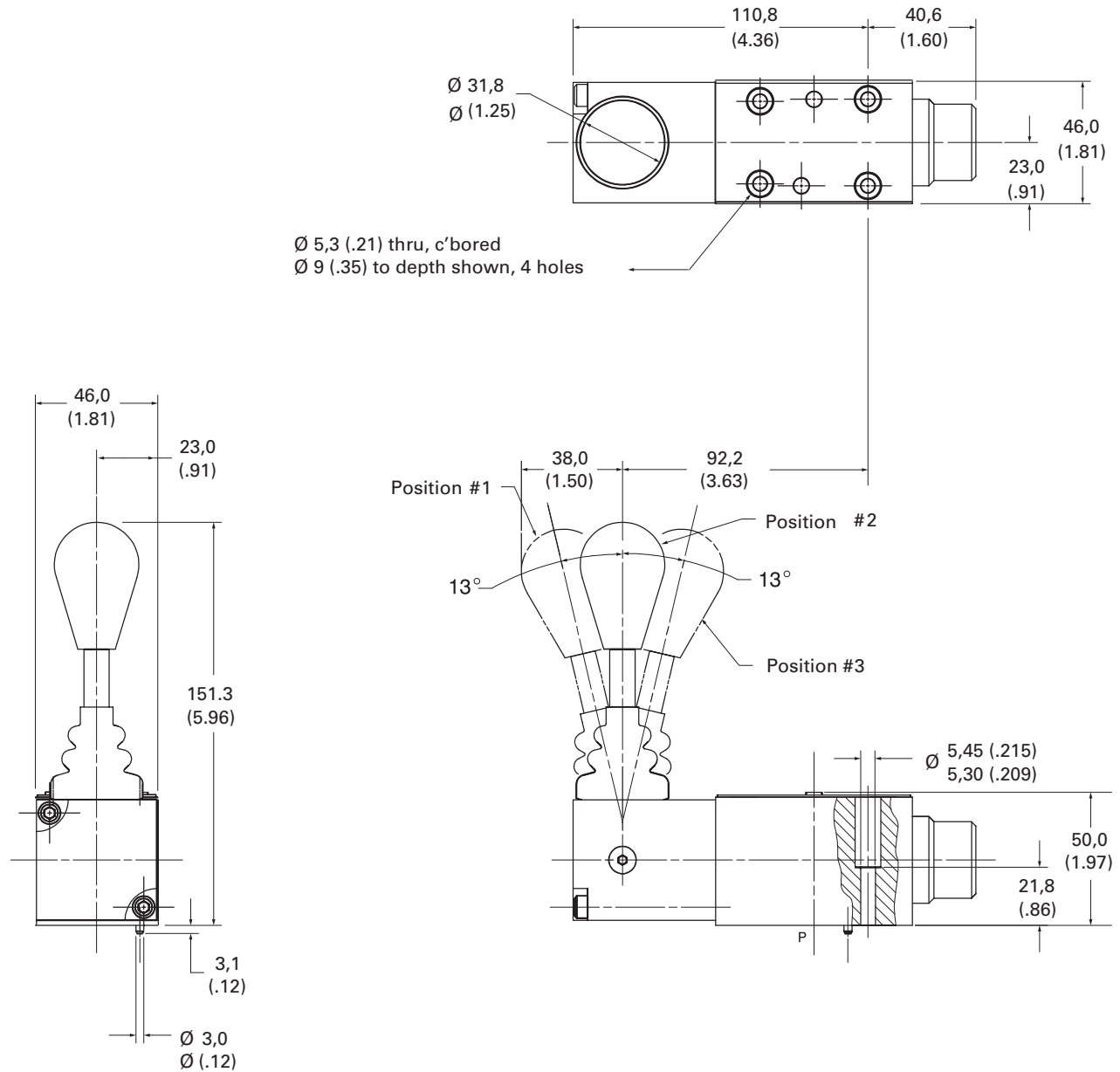


DG3V-3-**-A-T-P1-7-* -60
DG3V-3-**-B-T-P1-7-* -60
DG3V-3-**-F-T-P1-7-* -60

DG17V-3-*-60 Lever operated

Millimeters (inches)

II-B



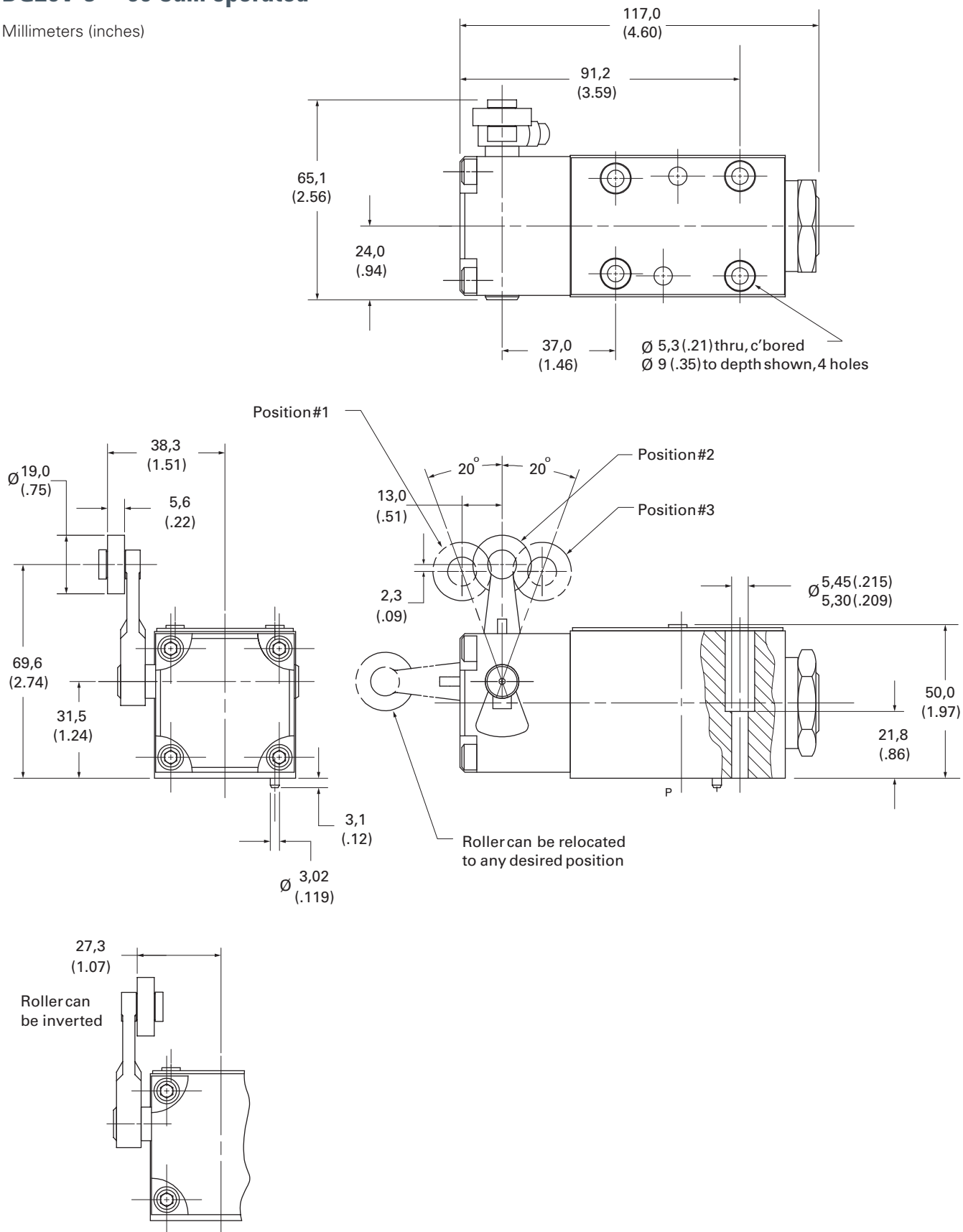
Installation dimensions

DG20V-3-* -60

DG20V-3-* -60 Cam operated

II-B

Millimeters (inches)

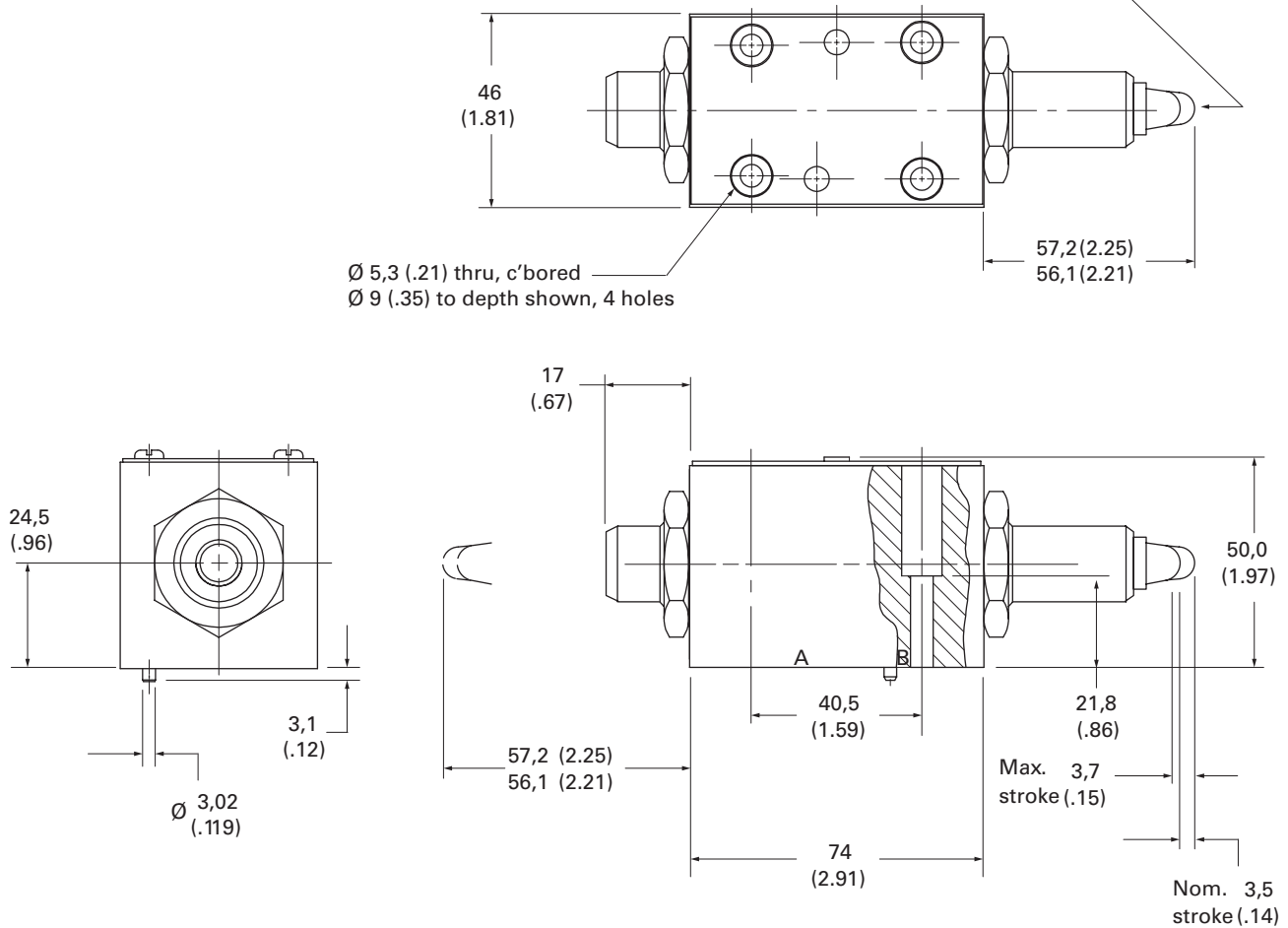


DG21V-3-A(L)-2-60 Plunger operated

Millimeters (inches)

II-B

Operating force, is dependent on hydraulic conditions and from 100-250 Nm (22-56 lb ft), must be applied axially



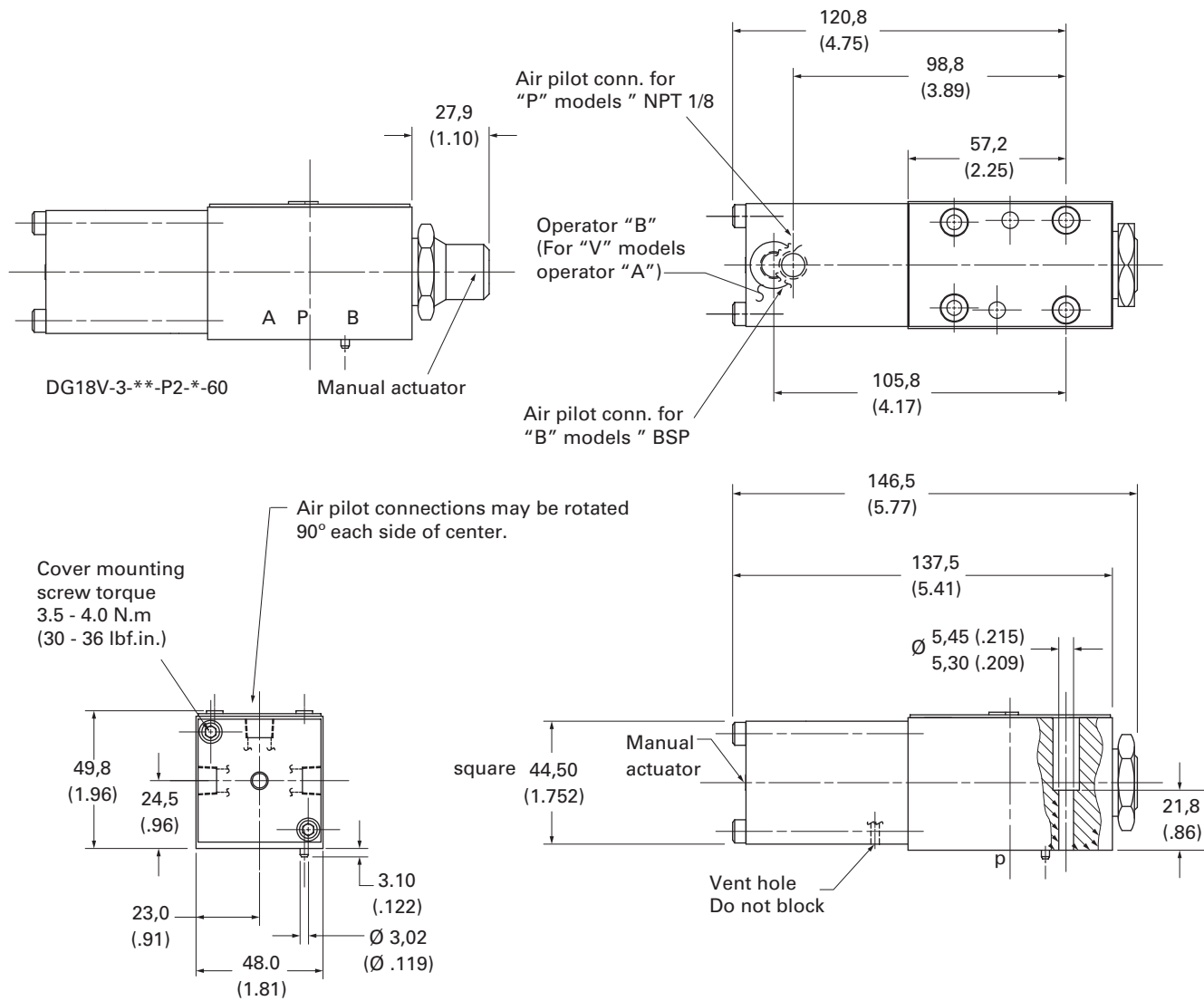
Installation dimensions

DG18V-3-* -60

DG18V-3-* -60 Air operated

II-B

Millimeters (inches)



DG18V-3-*-60 Air operated

Millimeters (inches)

II-B

