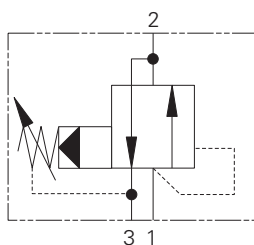


PSV1-16 - Pressure sequence valve

Spool, pilot operated, normally closed, internal pilot, external drain
95 L/min (25 USgpm) • 350 bar (5000 psi)



Operation

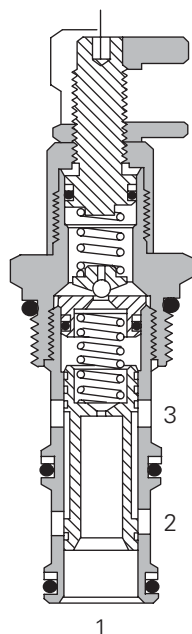
In the normal condition port 2 is open to the tank port 3 and port 1 is blocked.

When the pressure on port 1 exceeds the setting of the valve port 1 opens to port 2 and port 3 is blocked but must always be referenced to tank.

Features

Hardened steel working parts give long, trouble-free life. Selectively matched honed assemblies give accurate performance.

Sectional view



Performance data

Ratings and specifications

Performance data is typical with fluid at 21,8 cSt (105 SUS) and 49° C (120° F)

Typical application pressure (all ports)	350 bar (5000 psi)
Cartridge fatigue pressure (infinite life)	350 bar (5000 psi)
Maximum sequence pressure	415 bar (6000 psi)
Rated flow	95 L/min (25 USgpm)
Cavity	C-16-3
Standard housing materials	Aluminum or steel
Temperature range	-40° to 120°C (-40° to 248°F)
Fluids	All general purpose hydraulic fluids such as: MIL-H-5606, SAE 10, SAE 20, etc.
Filtration	Cleanliness Code 18/16/13
Weight cartridge only	0,24 kg (0.53 lbs)
Seal kits	565811 Buna-N 889610 Viton®

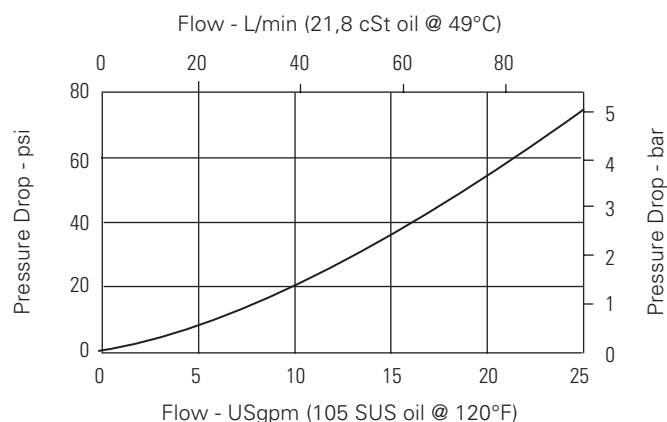
Viton is a registered trademark of E.I. DuPont

Description

This is a pilot operated, spool type, internally piloted, externally drained screw in cartridge pressure sequence valve. In its normal position port 2 is open to the tank line port 3.

Pressure drop curve

Port 1 to 2, valve fully open, spring omitted
Cartridge only



Where measurements are critical request certified drawings. We reserve the right to change specifications without notice.

PSV1-16 - Pressure sequence valve

Spool, pilot operated, normally closed, internal pilot, external drain
95 L/min (25 USgpm) • 350 bar (5000 psi)

Model code

PSV1 - 16 (V) - * - (*) - *** - **/ ** - 00

1 2 3 4 5 6 7 8 9

1 Function

PSV1 - Pressure sequence valve

2 Size

16 - 16 size

3 Seal material

Blank - Buna-N
V - Viton®

4 Adjustment

C - Cap
K - Knob
S - Screw

5 Valve housing material

Blank - Aluminum
S - Steel

6 Port size

0 - Cartridge only

Code	Port size	Housing number		
		Aluminum light duty	Aluminum fatigue rated	Steel fatigue rated
6B	3/4" BSPP	02-175465	—	—
4G	1/2" BSPP	—	876720	02-175131
6G	3/4" BSPP	—	876722	02-175132
10H	SAE 10	—	876721	—
12H	SAE 12	—	876723	—
10T	SAE 10	—	—	02-175129
12T	SAE 12	566152	—	02-175130

See section J for housing.

7 Sequence pressure range

Note: Code based on pressure in psi.

30 - 34-210 bar (500-3000 psi)

60 - 70-415 bar (1000-6000 psi)

8 Setting pressure

Within ranges in **7**

Blank - Normal factory setting at approximate mid-range. User requested settings in 3,45 bar (50 psi) steps, Coded as in the following examples:

10 - 70 bar (1000 psi)

10.5 - 72,4 bar (1050 psi)

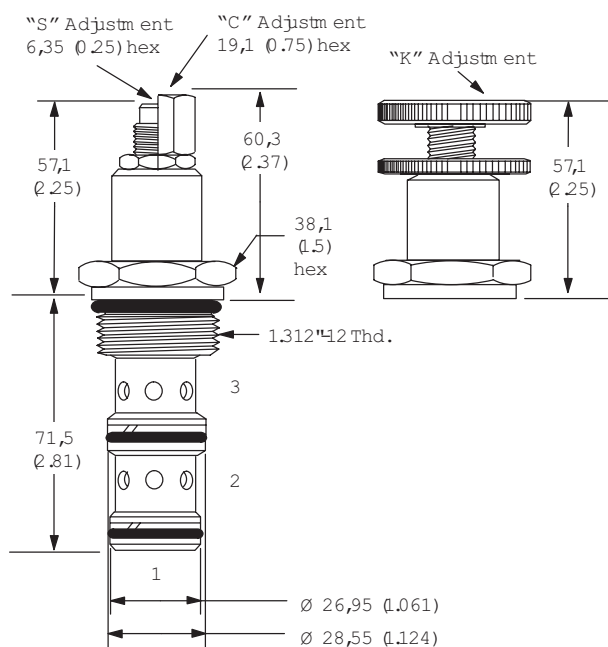
9 Special features

00 - None
(Only required if valve has special features, omitted if "00.")

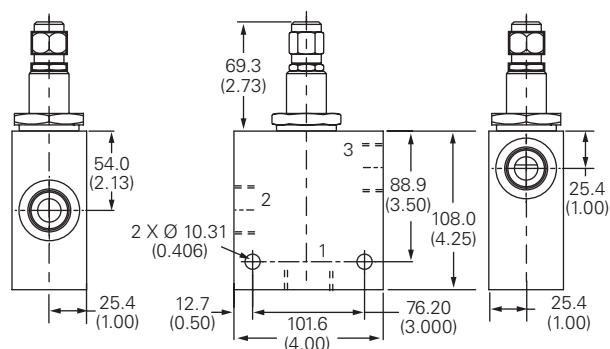
Dimensions

mm (inch)

Cartridge only



Installation drawing (Steel)



Torque cartridge in housing
A - 108-122 Nm (80-90 ft. lbs)
S - 136-149 Nm (100-110 ft. lbs)

Warning

Aluminum housings can be used for pressures up to 210 bar (3000 psi). Steel housings must be used for operating pressures above 210 bar (3000 psi).

Where measurements are critical request certified drawings. We reserve the right to change specifications without notice.