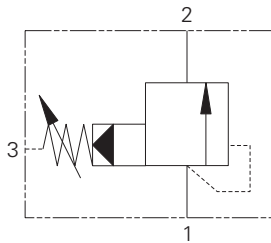


# 1PS60 - Pressure sequence valve

Spool, pilot operated, normally closed, internal pilot, external drain  
60 L/min (16 USgpm) • 350 bar (5000 psi)



## Operation

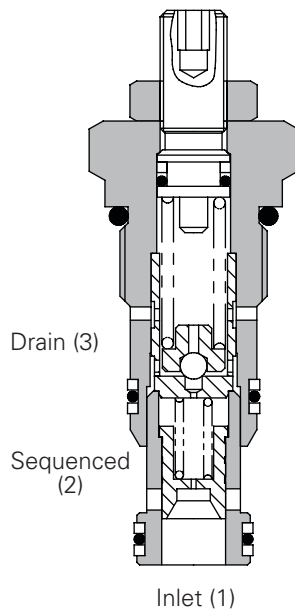
As in the pilot operated relief, when the setting of the valve is exceeded the pilot section opens.

This pilot flow causes a pressure imbalance opening the main section and allowing flow to a secondary circuit (sequenced line).

## Features

Hardened steel working parts give long, trouble-free life. Selectively matched honed assemblies give accurate performance.

## Sectional view



## Performance data

### Ratings and specifications

Figures based on: Oil Temp = 40° C Viscosity = 32 cSt (150 SUS)

Rated flow	60 L/min (16 USgpm)	
Max setting	350 bar (5000 psi)	
Cartridge material	Working parts hardened and ground steel. External surfaces zinc plated.	
Body material	Standard aluminium (up to 210 bar*). Add suffix "377" for steel option.	
Mounting position	Unrestricted	
Cavity number	CVA-22-06-0 (See Section M)	
Torque cartridge into cavity	60 Nm (44 lbs ft)	
Weight	1PS60	0.16 kg (0.35 lbs)
	1PS65	0.50 kg (1.10 lbs)
Seal kit number	SK618 (Nitrile) SK618V (Viton®)	
Filtration	BS5540/4 Class 18/12 (25 micron nominal)	
Operating temp	-30°C to +90°C (-22°C to +194°F)	
Leakage	35 milliliters/min @ 280 bar	
Nominal viscosity range	5 to 500 cSt	

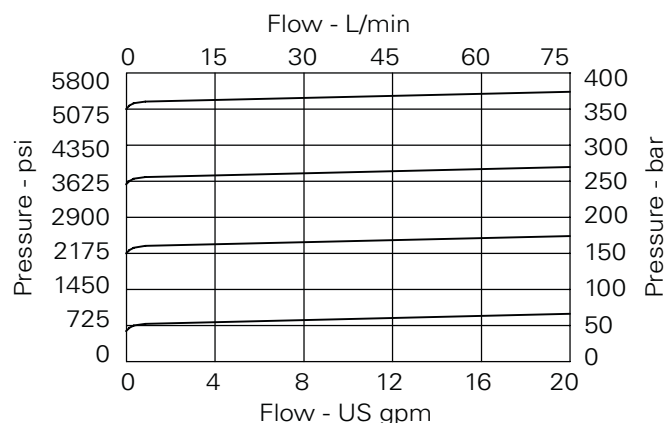
Viton is a registered trademark of E.I. DuPont

## Description

Pilot operated models are best suited for higher flows which may vary widely to:

1. Provide ordered or sequenced series of operations as in a clamp and drill circuit.
2. Serve as a relief valve where oil viscosity or restrictions in the downstream line would cause excessive back pressure. The separate spring chamber drain makes the sequence valve insensitive to this back pressure.

## Pressure drop curves

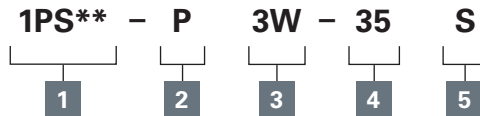


Where measurements are critical request certified drawings. We reserve the right to change specifications without notice.

# 1PS60 - Pressure sequence valve

Spool, pilot operated, normally closed, internal pilot, external drain  
60 L/min (16 USgpm) • 350 bar (5000 psi)

## Model code



### 1 Basic Code

**1PS60** - Cartridge Only  
**1PS65** - Cartridge and Body

### 2 Adjustment Means

**P** - Leakproof Screw Adjustment  
**R** - Handknob Adjustment  
**G** - Tamperproof Cap (See page E-7 for dimensions)

### 3 Port sizes - bodied valves only

Code	Port size	Housing number	
		Aluminium Single	Steel Single
<b>3W</b>	3/8" BSP 1/4" BSP Drain Port	B12751	B17070
<b>4W</b>	1/2" BSP 1/4" BSP Drain Port	B8533	
<b>6T</b>	3/4" SAE 1/4" SAE Drain Port	B10796	
<b>8T</b>	1/2" SAE 1/4" SAE Drain Port	B10797	B11802

### 4 Pressure range @4,8 L/min

**Note:** Code based on pressure in bar.

**10** - 7-100 bar  
Std setting 35 bar  
**20** - 10-210 bar  
Std setting 100 bar  
**35** - 20-350 bar  
Std setting 280 bar  
Std setting made at 4.8 liters min

### 5 Seals

**S** - Nitrile (For use with most industrial hydraulic oils)  
**SV** - Viton (For high temperature and most special fluid applications)

## Dimensions

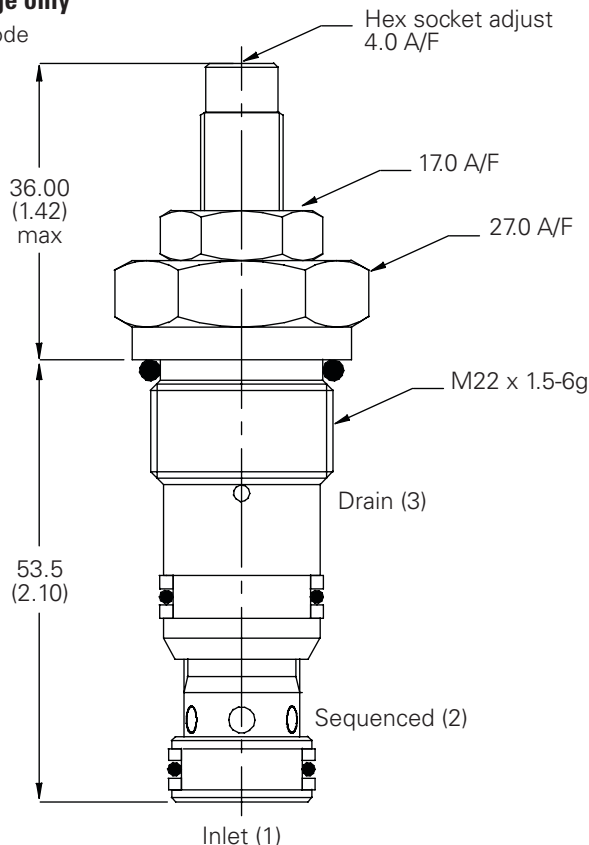
mm (inch)

**Note:** Tightening torque of "F" adjuster locknut - 20 to 25 Nm

**Note:** For applications above 210 bar please consult our technical department or use the steel body option.

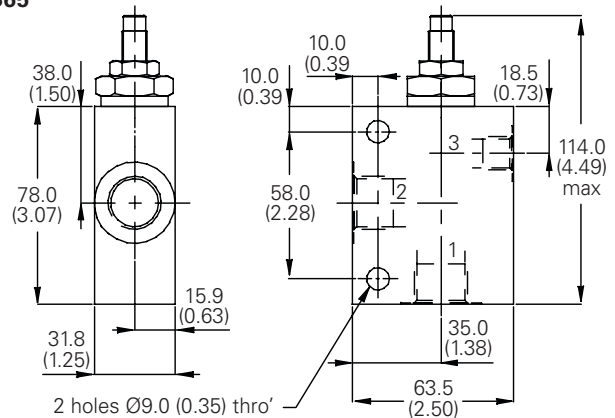
### Cartridge only

Basic Code  
**1PS160**



### Complete valve

3/8", 1/2" Ports  
Basic Code  
**1PS65**



Where measurements are critical request certified drawings. We reserve the right to change specifications without notice.