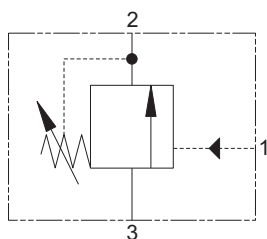


PSV4-8 - Pressure sequence valve

Spool, direct acting normally closed, internal drain
15 L/min (4 USgpm) • 350 bar (5000 psi)



Operation

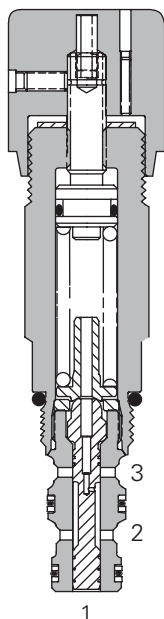
When a pre-set pilot pressure is reached the spool moves back against the spring opening the line between inlet and outlet.

When the pilot pressure falls the valve will return to its normal position.

Features

Cartridge design enabling speedy servicing when mounted in a body or in a composite manifold. Working pressure 350 bar.

Sectional view



Performance data

Ratings and specifications

Performance data is typical with fluid at 21,8 cSt (105 SUS) and 49° C (120° F)

| | |
|--|---|
| Typical application pressure (all ports) | 350 bar (5000 psi) |
| Cartridge fatigue pressure (infinite life) | 280 bar (4000 psi) |
| Rated flow | 15 L/min (4 USgpm) |
| Sequence pressure ranges | 15 – 28–100 bar (400–1500 psi) |
| | 30 – 3,4–210 bar (50–3000 psi) |
| | 50 – 124–350 bar (1800–5000 psi) |
| Reseat pressure | More than 90% of cracking pressure |
| Internal leakage | 5 in3/min @ 210 bar (3000 psi) |
| Hysteresis | less than 3 bar (45 psi) |
| Temperature range | -40° to 120°C (-40° to 248°F) |
| Cavity | C-8-3 |
| Fluids | All general purpose hydraulic fluids such as: MIL-H-5606, SAE 10, SAE 20, etc. |
| Filtration | Cleanliness Code 18/16/13 |
| Standard housing materials | Aluminum or steel |
| Weight cartridge only | 0,21 kg (0.47 lbs) |
| Seal kits | 02-160755 Buna N 02-160756 Viton® |

Viton is a registered trademark of E.I. DuPont

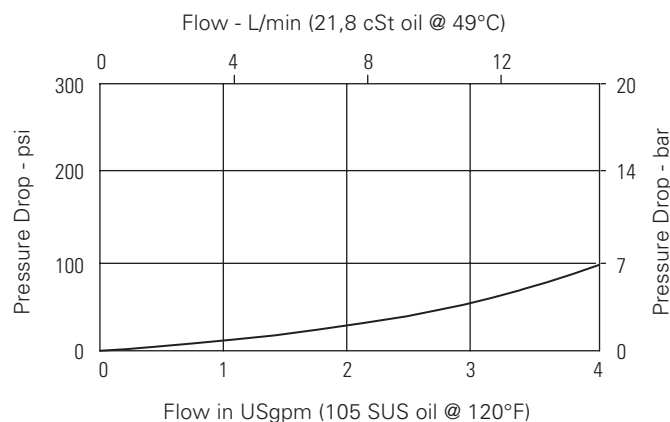
Description

This valve provides a means of opening a pressure line when a predetermined pilot pressure is reached in a normally closed form.

The valve can be used in any pilot or small flow system as a remotely operated sequence valve.

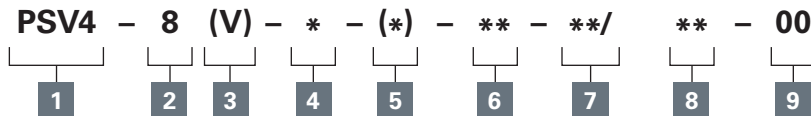
Pressure drop curve

Port 3 to 2,
valve fully open
Cartridge only



Where measurements are critical request certified drawings. We reserve the right to change specifications without notice.

Spool, direct acting normally closed, internal drain
15 L/min (4 USgpm) • 350 bar (5000 psi)



PSV4 - Pressure sequence valve

8 - 8 size

Blank - Buna-N
V - Viton®

C - Cap
K - Knob
S - Screw

Omit for cartridge only
S - Steel
A - Aluminum

0 - Cartridge only

| Code | Port size | Housing number | |
|-----------|-----------|----------------|-----------|
| 4T | SAE 6 | 02-160741 | 02-160745 |
| 6T | SAE 6 | 02-160742 | 02-160746 |
| 2G | 1/4" BSPP | 02-160739 | 02-160743 |
| 3G | 3/8" BSPP | 02-160740 | 02-160744 |

See section J for housing details.

Note: Code based on pressure in psi.

15 - 28-100 bar
(400-1500 psi)

30 - 34-210 bar
(500-3000 psi)

50 - 124-350 bar
(1800-5000 psi)

Optional - Specify in 100 psi increments. If not specified, set at:

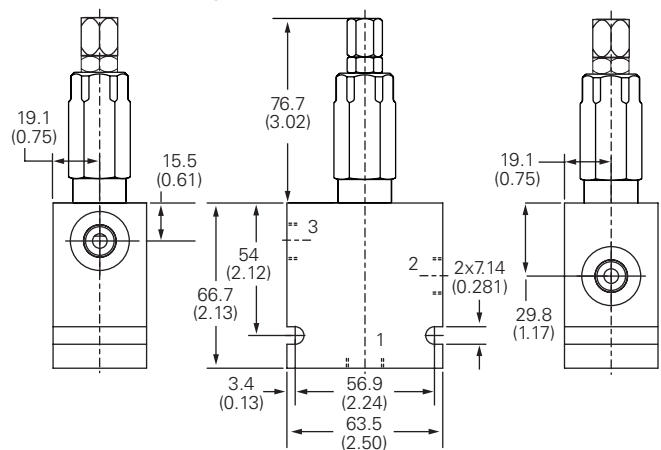
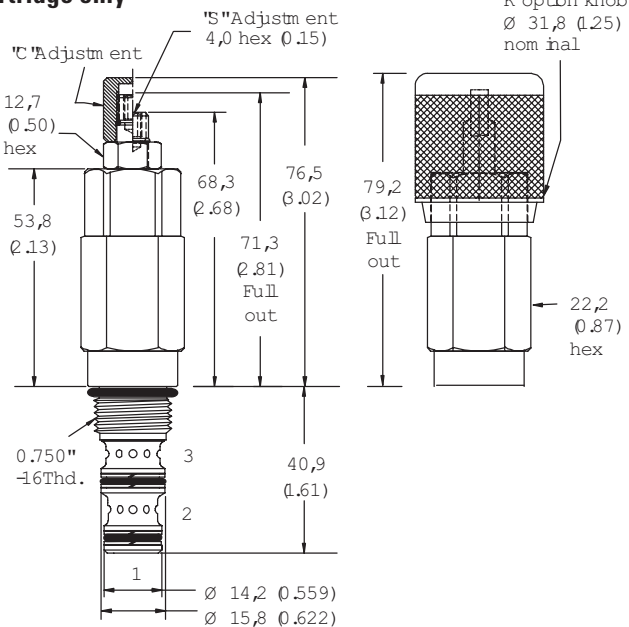
15 - 52 bar (750 psi)

30 - 100 bar (1500 psi)

00 - None

(Only required if valve has special features, omitted if "00.")

mm (inch)



Warning

Aluminum housings can be used for pressures up to 210 bar (3000 psi). Steel housings must be used for operating pressures above 210 bar (3000 psi).

Torque cartridge in
aluminum or steel housing
34-41 Nm (25-30 ft. lbs)

Where measurements are critical request certified drawings. We reserve the right to change specifications without notice.