



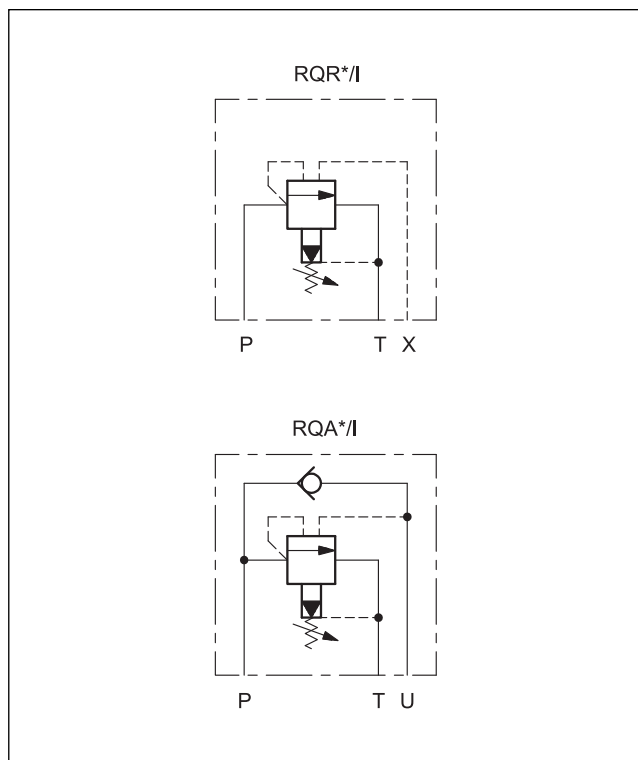
RQ-P**
UNLOADING VALVE
(FOR CIRCUITS WITH ACCUMULATOR)
SERIES 42

RQR*-P
FOR REMOTE PILOTING

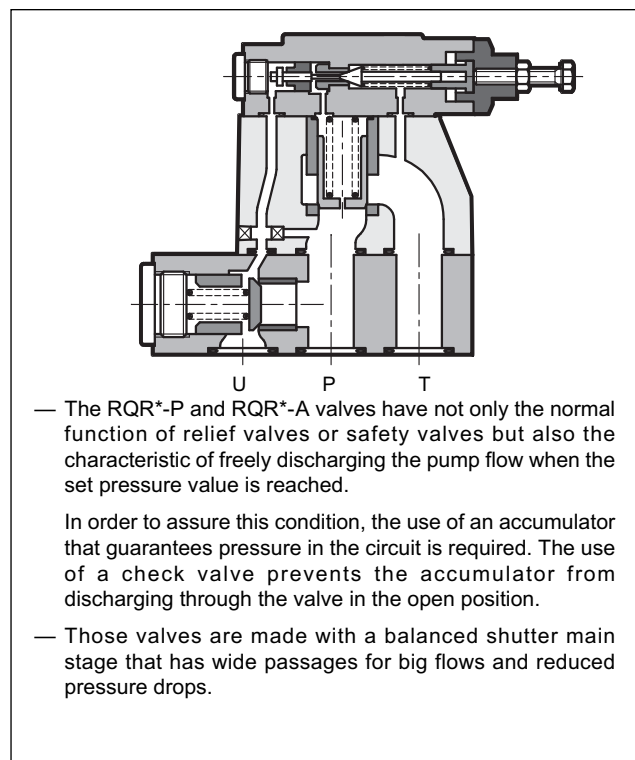
RQA*-P
WITH INCORPORATED CHECK VALVE

SUBPLATE MOUNTING

HYDRAULIC SYMBOLS



OPERATING PRINCIPLE



PERFORMANCES

(measured with mineral oil of viscosity 36 cSt at 50°C)

| | | RQR3-P | RQR5-P | RQR7-P | RQA5-P | RQA7-P |
|----------------------------|-------|---|---------------|---------------|---------------|---------------|
| Maximum operating pressure | bar | 350 | | | | |
| Maximum flow rate | l/min | 200 | 400 | 500 | 400 | 500 |
| Ambient temperature range | °C | -20 / +50 | | | | |
| Fluid temperature range | °C | -20 / +80 | | | | |
| Fluid viscosity range | cSt | 10 ÷ 400 | | | | |
| Fluid contamination degree | | According to ISO 4406:1999 class 20/18/15 | | | | |
| Recommended viscosity | cSt | 25 | | | | |
| Mass | Kg | 3,5 | 4,3 | 6,5 | 10 | 17 |

1 - IDENTIFICATION CODE

| | | | | | | | | | | | | | | | | |
|----------|----------|--|--|----------|----------|--|----------|--|----------|----------|----------|--|----------|-----------|----------|--|
| R | Q | | | - | P | | / | | / | I | / | | / | 42 | / | |
|----------|----------|--|--|----------|----------|--|----------|--|----------|----------|----------|--|----------|-----------|----------|--|

Unloading valve —

Automated unloading for circuits with accumulator
R = for remote piloting
A = with incorporated check valve (size 3 excluded)

Size: _____
3 = RQR3-P ISO 6264-06-09-* -97 (CETOP R06)
5 = RQR5-P ISO 6264-08-13-* -97 (CETOP R08)
5 = RQA5-P
7 = RQR7-P ISO 6264-10-07-* -97 (CETOP R10)
7 = RQA7-P

Subplate mounting —

Pressure adjustment range: _____
3 = up to 70 bar
5 = up to 210 bar
6 = up to 280 bar

Seals: omit for mineral oils
V = viton for special fluids

Series No. (the overall and mounting dimensions remain unchanged from 40 to 49)

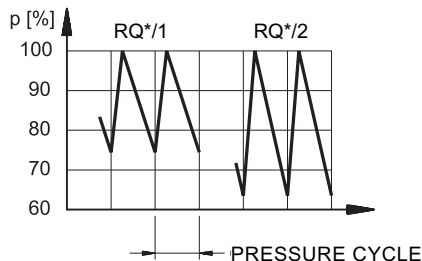
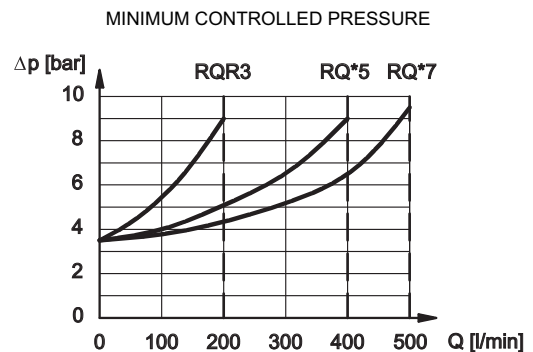
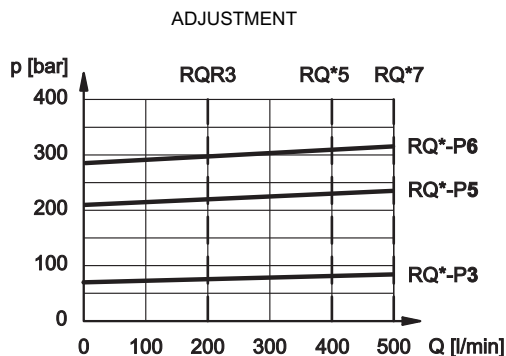
M = adjustment with SICBLOC knob (omit for adjustment with hexagonal head screw)

Internal drainage —

Differential pressure (values $\pm 2.5\%$)
1 = pump switch on at 75% of the set value
2 = pump switch on at 63% of the set value

2 - CHARACTERISTIC CURVES

(values obtained with viscosity of 36 cSt at 50°C)

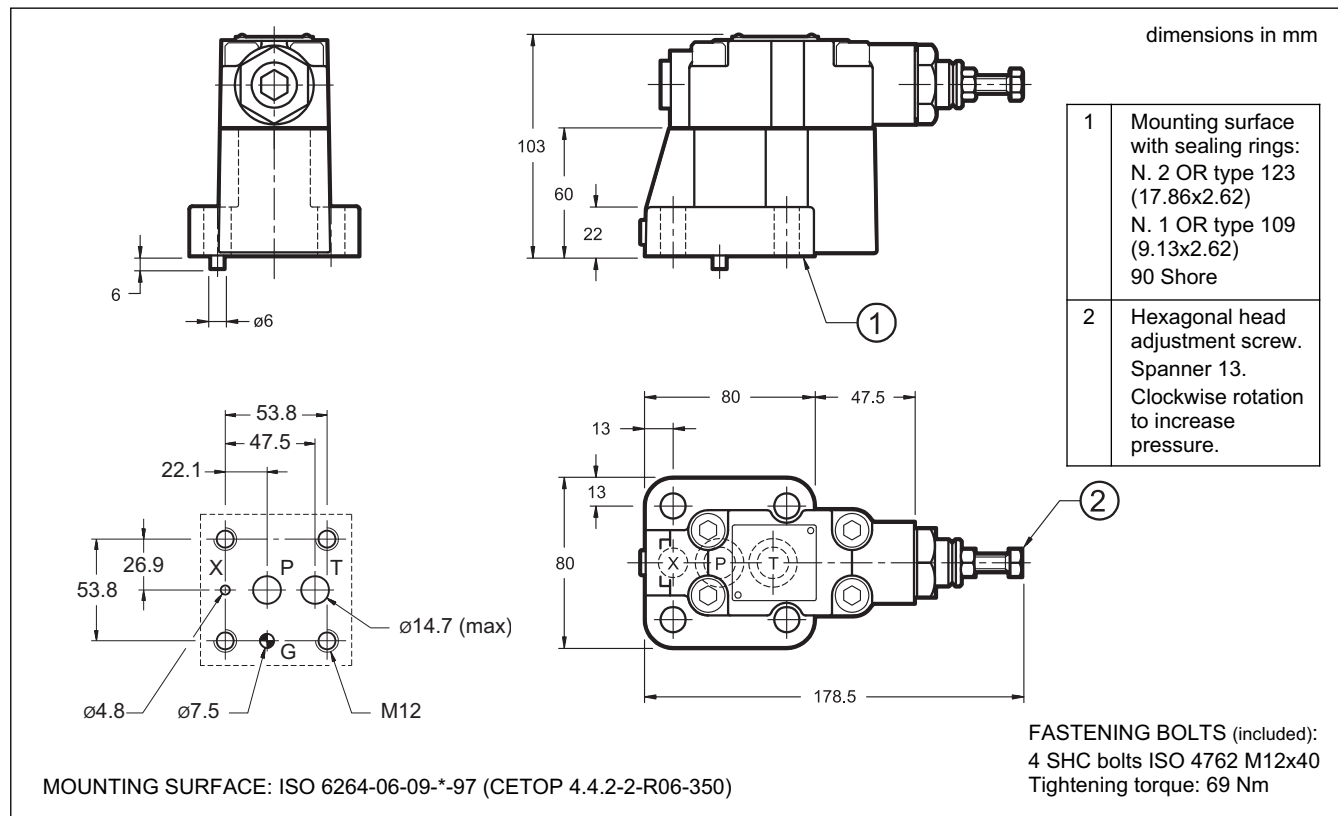


3 - HYDRAULIC FLUIDS

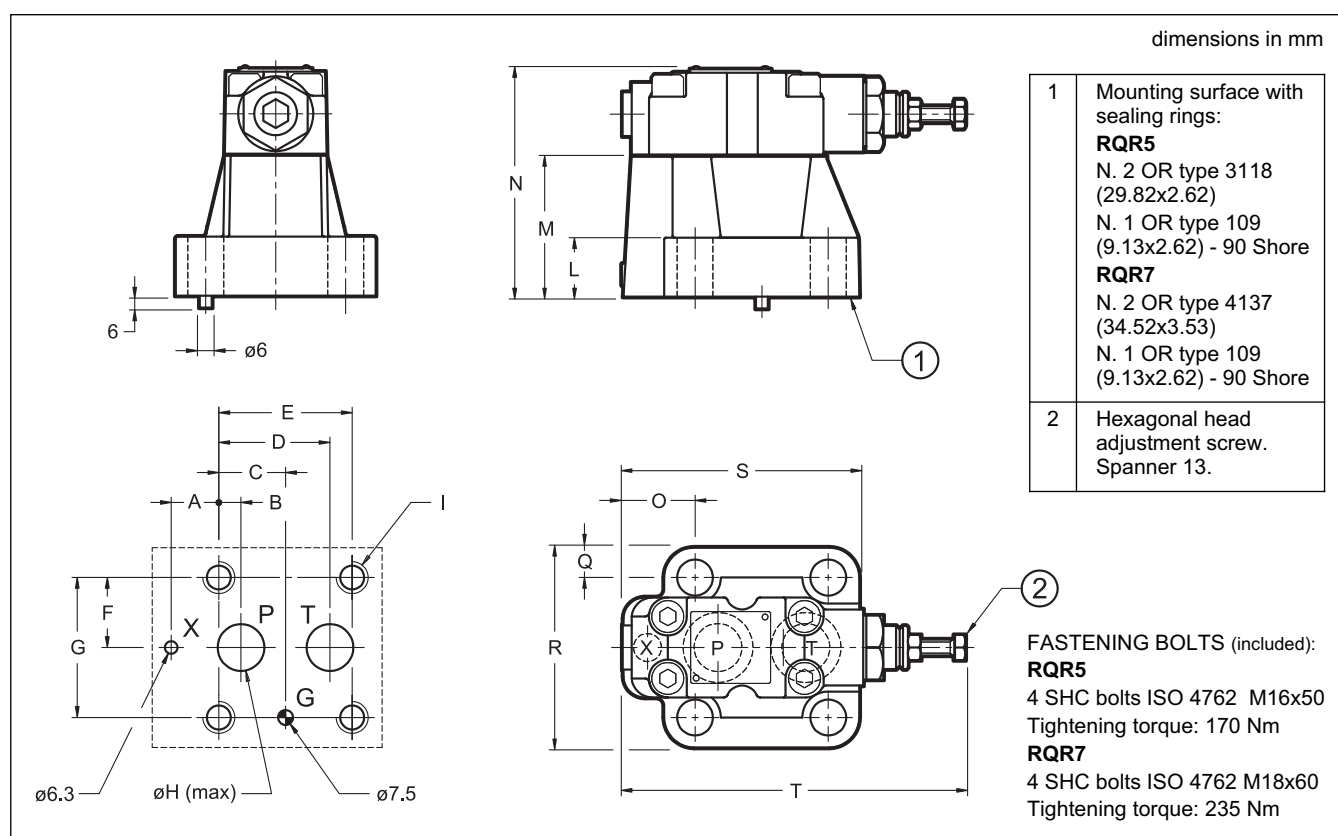
Use mineral oil-based hydraulic fluids HL or HM type, according to ISO 6743-4. For these fluids, use NBR seals. For fluids HFDR type (phosphate esters) use FPM seals (code V). For the use of other kinds of fluid such as HFA, HFB, HFC, please consult our technical department.

Using fluids at temperatures higher than 80 °C causes a faster degradation of the fluid and of the seals characteristics. The fluid must be preserved in its physical and chemical characteristics.

4 - RQR3-P OVERALL AND MOUNTING DIMENSIONS

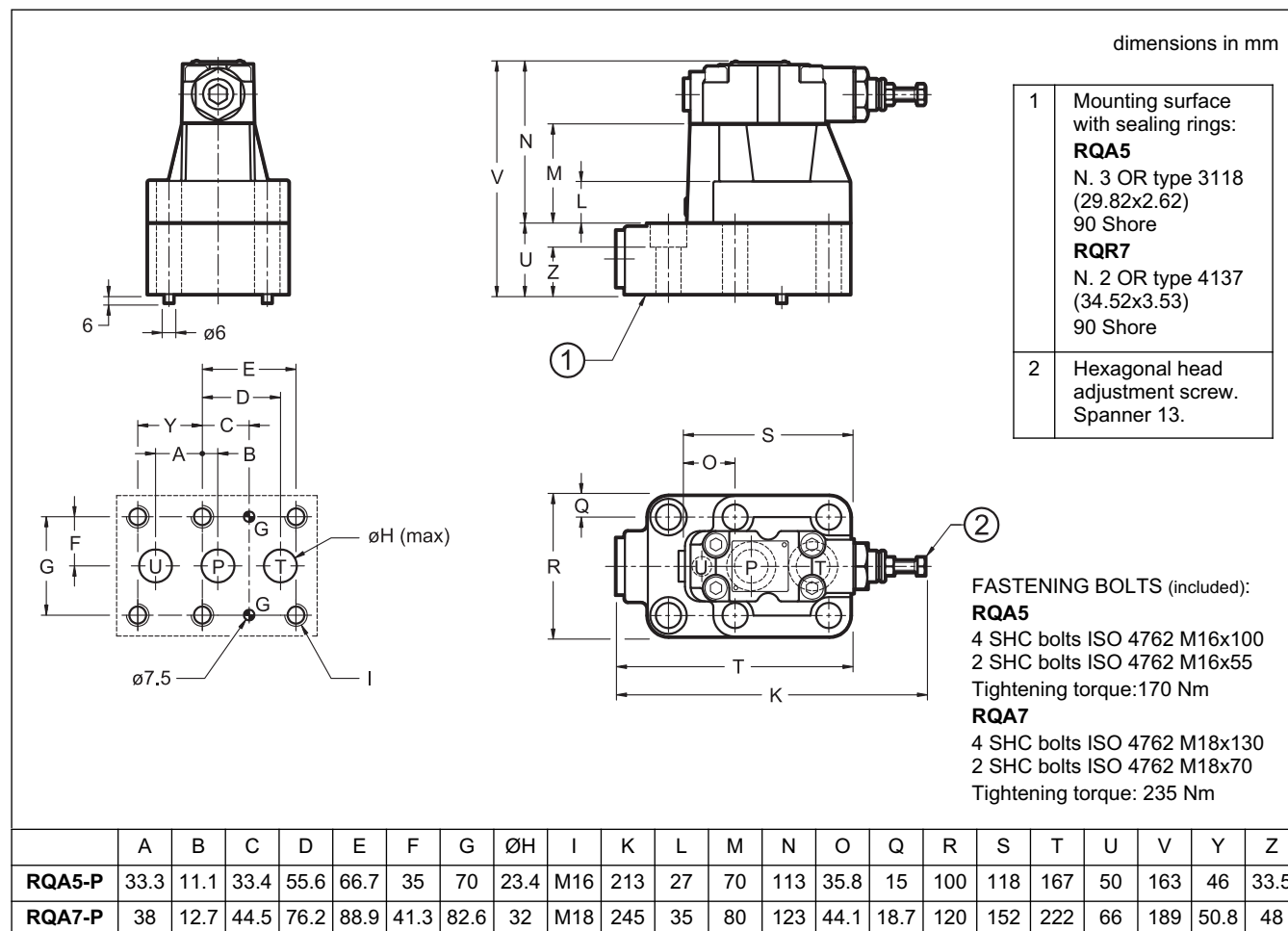


5 - RQR5-P AND RQR7-P OVERALL AND MOUNTING DIMENSIONS



| | MOUNTING SURFACE | A | B | C | D | E | F | G | ØH | I | L | M | N | O | Q | R | S | T |
|---------------|--|------|------|------|------|------|------|------|------|-----|----|----|-----|------|------|-----|-----|-----|
| RQR5-P | ISO 6264-08-13-*97 (CETOP 4.4.2-2-R08-350) | 23.8 | 11.1 | 33.4 | 55.6 | 66.7 | 35 | 70 | 23.4 | M16 | 27 | 70 | 113 | 35.8 | 15 | 100 | 118 | 170 |
| RQR7-P | ISO 6264-10-17-*97 (CETOP 4.4.2-2-R10-350) | 31.8 | 12.7 | 44.5 | 76.2 | 88.9 | 41.3 | 82.6 | 32 | M18 | 35 | 80 | 123 | 44.1 | 18.7 | 120 | 152 | 180 |

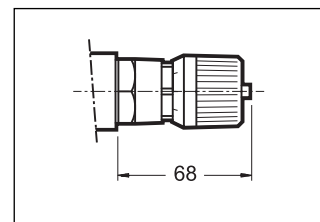
6 - RQA5-P AND RQA7P OVERALL AND MOUNTING DIMENSIONS



7 - ADJUSTMENT KNOB

The valves can be equipped with a SICBLOC adjustment knob. To operate it, push and rotate at the same time.

To request this option, add **M** (see paragraph 1) in the proper square.



8 - SUBPLATES

(see catalogue 51 000)

| | RQR3-P | RQR5-P | RQR7-P | RQA5-P | RQA7-P |
|--------------------------|----------------------------|-----------------------|-----------------------|------------------------|------------------------|
| Type | PMRQ3-AI4G rear ports | PMRQ5-AI5G rear ports | PMRQ7-AI7G rear ports | PMRQA5-AI5G rear ports | PMRQA7-AI7G rear ports |
| P, T, U ports dimensions | P: 1/2" BSP T: 3/4" BSP | 1" BSP | 1" 1/4 BSP | 3/4" BSP | 1" 1/4 BSP |
| X port dimension | 1/4" BSP | 1/4" BSP | 1/4" BSP | - | - |