

SMT-8G/10G Proximity sensor for grippers and compact drive units

FESTO



Compact!

The perfect partner for grippers: The SMT-8G/10G compact proximity sensor. Especially optimised for grippers. These proximity sensors are based on years of engineering experience and production expertise acquired for sensors, drive units, and grippers. The result: A new dimension of reliability and economic efficiency from one source.

Spaceoptimised and reliable

A well-thought-out solution for compact and reliable sensing in gripper slots of all types. Special characteristics are the casing which doesn't extend beyond the slot length and the cable outlet which doesn't interfere in the gripping area.

Maximum system availability

The "robot" type line quality which comes as standard delivery is adapted to gripper applications. If X lengths are neces-

sary, the NEBU modular system for connecting cables offers them in "robot" quality.

Clear and simple

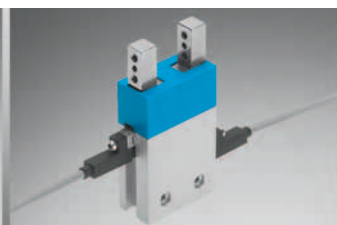
An LED on each front side of the sensor ensures clarity. The standard internal hexagon socket of 1.5 mm enables easy positioning.

Compatible

SMT-8G/10G: 100% sensor technology for all drive units from Festo.



Flexible



Compact



Process-reliable

306.6.PSI →

Product Short Information

SMT-8G/10G Proximity sensor

compact for grippers and compact drive units

Technical data

SMT-8G/10G	Compact proximity sensor
Switching output	PNP contact
Operating voltage	24 V DC
Line quality	Robot line
Line length	0.3 m for M5 and M8; 2.5 m for open end
Connection technology	M8 knurled ring M5 knurled ring Open endwiring
Cable sheath	Polyurethane
Properties	High oil resistance, very flexible
Robot line	Torsional properties, suitable for chain link trunking, halogen-free
SMT non-contacting	Short circuit protection, reverse voltage protection, overload protection
(Electrical) protection classes	IP65 and IP68
Reproducibility	± 0.1 mm
Certification	UL

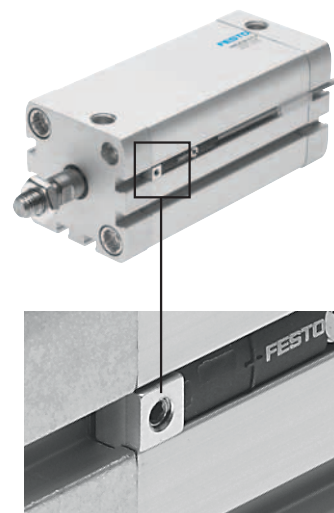
Type	Material number
SMT-8G-PS-24V-E-2,5Q-OE	547859
SMT-8G-PS-24V-E-0,3Q-M8D	547860
SMT-8G-PS-24V-E-0,3Q-M5D	547861
SMT-10G-PS-24V-E-2,5Q-OE	547862
SMT-10G-PS-24V-E-0,3Q-M8D	547863
SMT-10G-PS-24V-E-0,3Q-M5D	547864

Designed for completely reliable handling processes. The SMT-8G/10G proximity sensor – optimal for gripper and drive unit interaction.



Even more accessories – one for all: Positioning stops for slot 8 and 10 SMM-8/SMM-10

Quick and accurate replacement of sensors, even in positions that are hard to access. Ensures positioning accuracy of replacement sensors – the positioning stops for slot 8 and 10 SMM-8/SMM-10 make this possible.



More accessories: NEBU modular system for connecting cables

The fast way to the optimal sensor cable: the NEBU modular system for connecting cables provides unlimited possible combinations of connection sockets as well as cable lengths and qualities.



Festo AG & Co. KG

Ruiter Straße 82
73734 Esslingen
www.festo.de
Telefon 0180 303-1111
Telefax 0711 347-2071
infoservice@festo.com