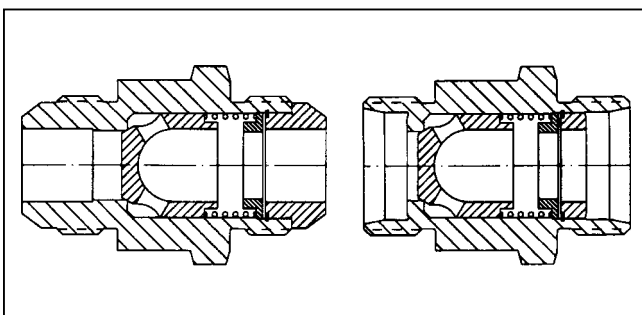
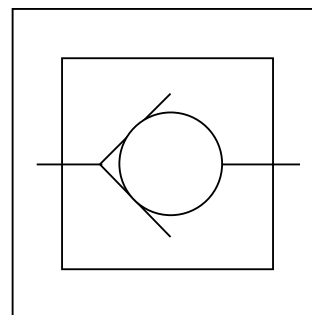


## General Description

Series J416 and J417 mini-check valves permit free flow in one direction and near zero leakage in the reverse direction. Series J416 and J417 check valves are used in applications with restricted weight and space constraints.

## Specifications

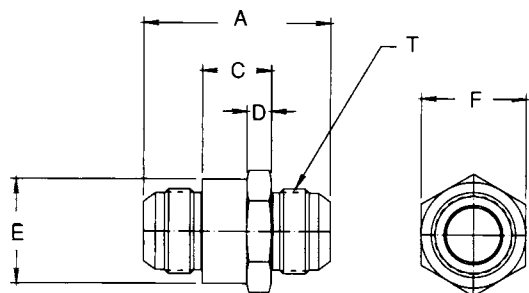
|                                   |   |
|-----------------------------------|---|
| <b>Service App.</b>               | Any liquid compatible with 316SS, and hardened 440 FSS  |
| <b>Maximum Operating Pressure</b> | Working: 345 Bar (5000 PSI) maximum<br>Proof: 517.5 Bar (7500 PSI)<br>Burst: 828 Bar (12,000 PSI)<br>Cracking: 0.3 Bar (5 PSI), $\pm 0.2$ Bar (3 PSI) |
| <b>Operating Temperature</b>      | -40°C to +82°C (-40°F to +180°F)  |
| <b>Internal Leakage</b>           | Zero above 0.3 Bar (5 PSI)<br>1 DPM maximum below 0.3 Bar (5 PSI)   |
| <b>Sizes</b>                      | 4", 6", 8", 12"   |
| <b>Ports</b>                      | FLD: Flared tube connection<br>SAE 37° MS33656<br>FLS: Flareless tube connection<br>MS33514   |
| <b>Material</b>                   | Body & Nose: 316 Stainless steel<br>Poppet: 440C Stainless steel<br>Spring: AMS5688 Stainless steel   |



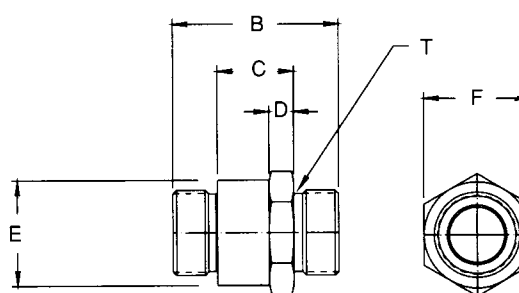
## Ordering Information

| J416A          |            |           |            | -4                |  | SS              |  | -5                |  | MS Part Number |            |
|----------------|------------|-----------|------------|-------------------|--|-----------------|--|-------------------|--|----------------|------------|
| Catalog Number |            |           |            | Size & Type Ports |  | Materials       |  | Cracking Pressure |  | Flared         | Flareless  |
| J416A          |            | J417A     |            | 4 FLD or, FLS     |  | SS              |  | 5                 |  | MS24593-4      | MS24423-4  |
| Inlet FLD      | Outlet FLD | Inlet FLS | Outlet FLS | 6 FLD or FLS      |  | Stainless Steel |  | 5 PSI ± 3         |  | MS24593-6      | MS24423-6  |
|                |            |           |            | 8 FLD or FLS      |  |                 |  |                   |  | MS24593-8      | MS24423-8  |
|                |            |           |            | 12 FLD or FLS     |  |                 |  |                   |  | MS24593-10     | MS24423-10 |
|                |            |           |            |                   |  |                 |  |                   |  | MS24593-12     | MS24423-12 |
|                |            |           |            |                   |  |                 |  |                   |  | MS24593-16     | MS24423-16 |

## Dimensions — Shown in inches



MS24593 or J416A



MS24423 or J417A

| Valve Size |      | T Thread        | A Ref. | B Ref. | F Hex | C    | D    | E Dia. | Flow GPM | Weight Lbs. | Cv Factor |
|------------|------|-----------------|--------|--------|-------|------|------|--------|----------|-------------|-----------|
| Pipe       | Tube |                 |        |        |       |      |      |        |          |             |           |
| 1/4        | 4    | .4375-20UNJF-3A | 1.538  | 1.344  | .688  | .438 | .219 | .678   | 1.2      | .07         | .38       |
| 3/8        | 6    | .5625-18UNJF-3A | 1.581  | 1.407  | .813  | .469 | .250 | .803   | 3.5      | .105        | .99       |
| 1/2        | 8    | .7500-18UNJF-3A | 1.814  | 1.624  | 1.000 | .500 | .281 | .990   | 6.0      | .195        | 1.98      |
| 3/4        | 12   | 1.0625-12UNJ-3A | 2.290  | 1.938  | 1.375 | .562 | .343 | 1.365  | 16.0     | .450        | 4.45      |

