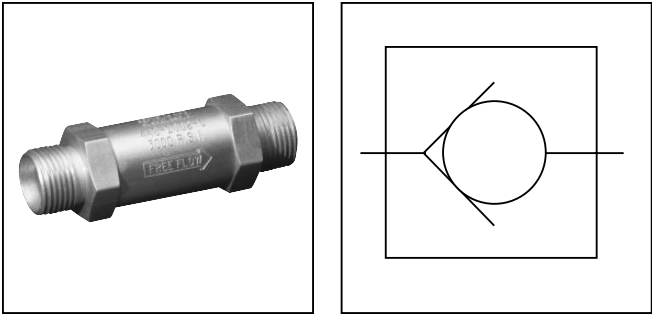


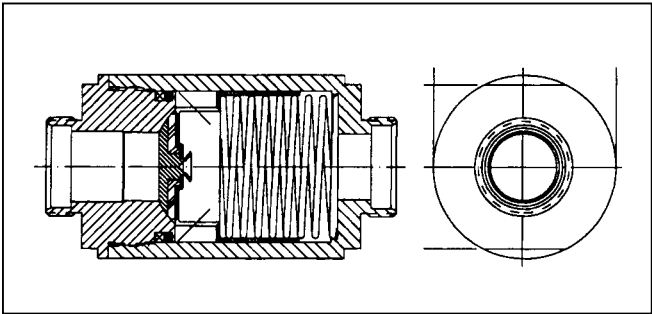
General Description

Series 480 free flow check valves permit free flow in one direction, and shut off in the reverse direction. Series 480 check valves can handle high velocity and will provide low pressure drop and zero leakage.



Features

- Resilient molded seal is permanently locked to poppet which ensures zero leakage in high velocity applications.



Specifications

Service App.	Pneumatic or Hydraulic	Mounting	In-line
Maximum Operating Pressure	Working: 207 Bar (3000 PSI) Proof: 345 Bar (4500 PSI) Burst: 517.5 Bar (7500 PSI)	Ports	NPT: Pipe threads FLD: Flared tube connection SAE 30° MS33656 (AND10056) FLS: Flareless tube connection MS33514 IST: Internal straight threads (tube connection) O-ring seals.
Nominal Cracking Pressure	0.14 Bar (2 PSI), ± 0.07 Bar (1 PSI) Other settings available to order	Material	Body & Cap: Brass, Aluminum alloy, or 303 Stainless steel Poppet Body: 305 Stainless steel Poppet Nose: 305 Stainless steel Spring: AMS5688 Stainless Steel O-ring: Synthetic rubber. Molded Seal: Synthetic rubber Back-up ring: PTFE
Operating Temperature	-54°C to +93°C (-65°F to +200°F) Higher temperature limits available		
Internal Leakage	Zero		
Sizes	IPT, EPT: 1/4", 3/8", 1/2", 3/4", 1" ISD, FLD, FLS: 4", 6", 8",		

F

Valve Size		Weights (Lbs. Approx.)			CV Factors
		Brass	Aluminum Alloy	Stainless Steel	Coefficient of Flow
4		.12	.06	.12	.75
6	1/4	.37	.12	.37	1.5
8	3/8	.62	.25	.62	4
	1/2	1.25	.5	1.25	6
	3/4	1.62	.75	1.62	7.5
	1	2.5	1.0	2.5	13

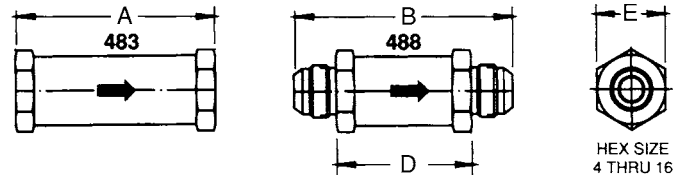
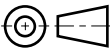
Ordering Information

483	-1/2	B	1	-2										
Catalog Number	Size and Type Ports	Materials	O-Ring Code	Cracking Pressure										
<div>483 Inlet NPT Outlet NPT</div> <div>488 Inlet FLD Outlet FLD</div>	<table><tr><td>4 IST or FLD or FLS</td><td></td></tr><tr><td>6 IST or FLD or FLS</td><td>1/4 NPT</td></tr><tr><td>8 IST or FLD or FLS</td><td>3/8 NPT</td></tr><tr><td rowspan="3"></td><td>1/2 NPT</td></tr><tr><td>3/4 NPT</td></tr><tr><td>1 NPT</td></tr></table>	4 IST or FLD or FLS		6 IST or FLD or FLS	1/4 NPT	8 IST or FLD or FLS	3/8 NPT		1/2 NPT	3/4 NPT	1 NPT	<div>483, 488 B Brass</div> <div>488 A Aluminum Alloy</div> <div>483 SS Stainless Steel</div> <div>Phase Out</div>	<div>1 Nitrile</div> <div>2 (Commercial) Nitrile</div> <div>Others Available See O-Ring Code & Media Chart Reference Section</div>	<div>2 2 PSI ± 1</div> <div>Others Available Consult Factory</div>
4 IST or FLD or FLS														
6 IST or FLD or FLS	1/4 NPT													
8 IST or FLD or FLS	3/8 NPT													
	1/2 NPT													
	3/4 NPT													
	1 NPT													



Dimensions

Inch equivalents for millimeter dimensions are shown in (**)



Valve Size		All Dimensions in Inches			
Tube	Pipe	A	B	D	Flats C
4		1 11/16	2 5/8	1 17/32	3/4
6	1/4	2 1/4	2 31/32	1 55/64	1
8	3/8	2 7/16	3 13/32	2 3/32	1 1/4
	1/2	2 15/16	3 31/32	2 29/64	1 1/2
	3/4	3 3/8	4 7/16	2 45/64	1 3/4
	1	3 25/32	4 15/16	3 7/64	2