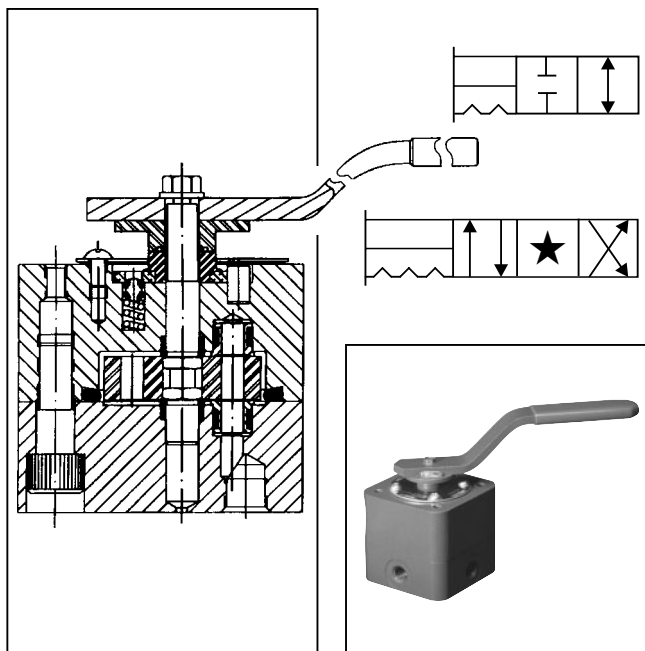


General Description

Series 8100E valves are 2, 3 and 4-way manual selector valves with near zero leakage characteristics and are rated to 414 Bar (6000 PSI) for liquids and 276 Bar (4000 PSI) for air. The valve design requires low actuation torque and can be used in applications where loads must be held for long periods and under difficult conditions.

Features

- Shear-type positive seal.
- Zero leakage (1 drop per min. per pressure port).
- High contamination tolerance.
- Long life due to wiping action of seals and disk.
- Low turning torque.
- Panel mounting is standard.



Specifications

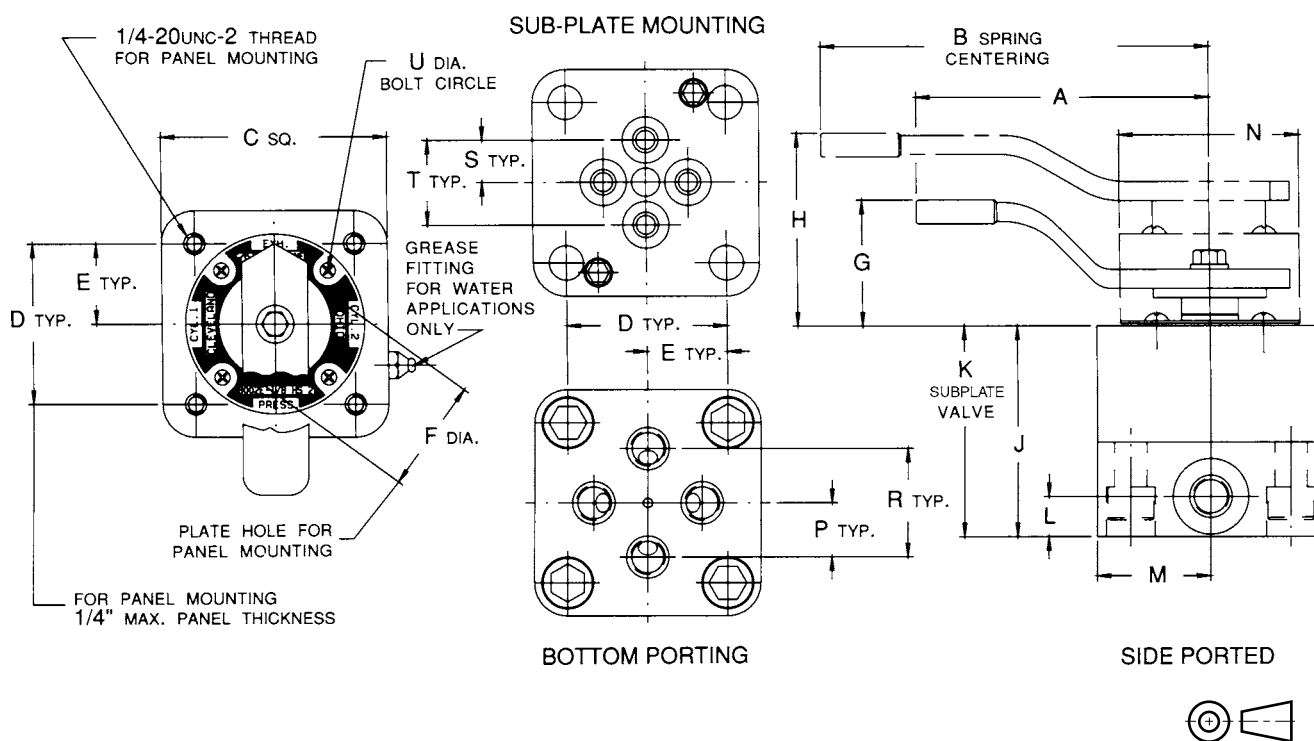
Service Applications	Lubricated air, hydraulic oil, and water. For case pressure or exhaust port pressure applications above 17.3 Bar (250 PSI), consult factory.	Material	Body & Cap: Steel Disk: Stainless steel type 440 Shaft: Stainless steel type 416 Seals: Stainless steel type 440 Spring Seals: Stainless steel O-rings: Synthetic rubber compatible with media Back-up rings: PTFE Handle: Steel Finish: Paint Note: Steel bodies and caps for water or air service are electroless nickel plated. Water service valves are equipped with grease fittings and require periodic lubrication with a waterproof grease.
Maximum Operating Pressure	Working: Liquids - 414 Bar (6000 PSI) Air - 276 Bar (4000 PSI) Proof: Liquids - 621 Bar (9000 PSI) Air - 414 Bar (6000 PSI) Burst: 1035 Bar (15,000 PSI)	Operating Temperature	-40°C to +121°C (-40°F to +250°F) Higher on special order
Porting	Bottom or side NPT: Pipe threads Sizes 1/4", 1/2" & 1" IST: Internal straight threads per AND10050 Sizes: 6, 10, & 16		
Mounting	Subplate - Sizes 6, 10 & 16		

Valve Size				Weight Lbs.	CV Factor P. to A. or P. to B.	Flow Passage Diameter	Handle Pull – Lbs.			
Subplate	SAE	Tube	Pipe				8100E		R8100E	
				Steel	8100E	8100E	Air	Oil	Air	Oil
Size 6	#6	6	1/4	5-1/2	1.0	.250 In.	18	15	17	16
Size 10	#10	10	1/2	10	1.2	.250 In.	15	13	22	19
Size 16	#16	16	1	22	3.2	.437 In.	18	15	28	26

Ordering Information

81	5	1	E	- 1/4	H	S	2	
Prefix for Special Feature	6000 PSI Series	Flow Pattern	Type of Porting	Design Series	Size	Service Media	Materials	O-Ring Code
See Option Page for Complete List	1 2-Way Shut-off 4 4-Way Closed Center 5 4-Way Tandem Center 7 4-Way Manipulator Closed Center 8 4-Way Manipulator/Open Center 9 3-Way	1 Side Ported 2 Bottom Ported 3 Subplate Mounted			1/4 NPT 1/2 NPT 1 NPT 6 IST 10 IST 16 IST 6 Subplate 10 Subplate 16 Subplate	A Lubricated Air H Hydraulic Oil W Water	S Steel	2 Nitrile 28 Fluorocarbon 52 EPR Others Available Per Request
								Suffix Options
								See Option Page for Complete List

Dimensions



Valve Size				All Dimensions are in Inches																	Subplate Mounted		
Sub-Plate	SAE	Tube	Pipe	A	B	C	D	E	F	G	H	J	K	L	M	N	P	R	S	T	U	Mt'g. Bolt	Torq.
Size 6	#6	6	1/4	6	8	3	2 ¹ / ₈	1 ¹ / ₁₆	1	2 ¹ / ₈	2 ²¹ / ₃₂	2 ²⁷ / ₃₂	2 ²¹ / ₆₄	¹⁷ / ₃₂	1 ¹ / ₂	2 ³ / ₈	²³ / ₃₂	1 ⁷ / ₁₆	⁹ / ₁₆	1 ¹ / ₈	2	7/16 - 20NF 2 x 2 ¹ / ₂ Lg.	865 In. – Lbs.
Size 10	#10	10	1/2	7	10	3 ¹ / ₂	2 ¹ / ₂	1 ¹ / ₄	1	2 ³ / ₈	3 ⁷ / ₆₄	3 ³⁷ / ₆₄	2 ⁵⁵ / ₆₄	⁴⁹ / ₆₄	1 ³ / ₄	2 ¹⁵ / ₁₆	¹³ / ₁₆	1 ⁵ / ₈	⁹ / ₁₆	1 ¹ / ₈	2 ¹ / ₂	7/16 - 20NF 2 x 3 Lg.	865 In. – Lbs.
Size 16	#16	16	1	10	12	4 ¹ / ₂	3 ³ / ₁₆	1 ¹⁹ / ₃₂	1 ³ / ₈	2 ¹⁵ / ₁₆	3 ³ / ₈	4 ²³ / ₃₂	3 ⁴⁵ / ₆₄	1	2 ¹ / ₄	3 ¹¹ / ₁₆	1 ³ / ₈	2 ³ / ₄	¹³ / ₁₆	1 ⁵ / ₈	3 ³ / ₁₆	5/8 - 18NF 2 x 3 ¹ / ₂ Lg.	3,250 In. – Lbs.