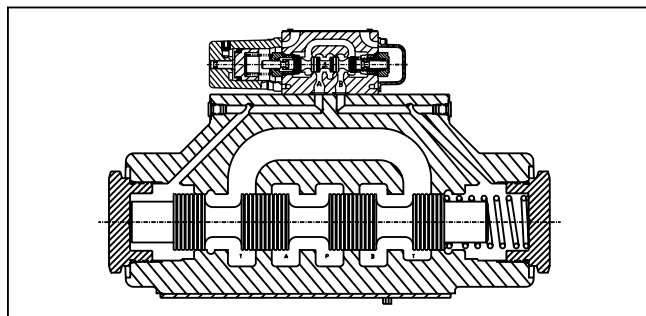
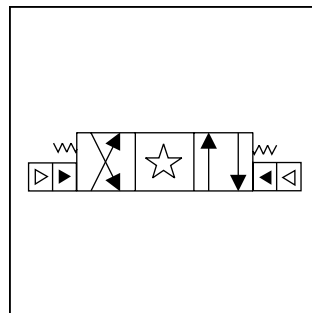
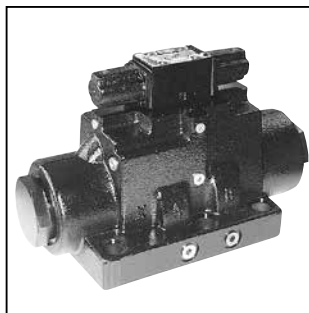


## General Description

Series D101VA directional control valves are 5-chamber, air pilot operated valves. They are available in 2 or 3-position styles. These valves are manifold or subplate mounted, and conform to NFPA's D10, CETOP 10 mounting pattern.

## Specifications

<b>Mounting Pattern</b>	NFPA D10, CETOP 10, NG32
<b>Max. Operating Pressure</b>	207 Bar (3000 PSI)
<b>Max. Tank Pressure</b>	Internal Drain Model: 34 Bar (500 PSI) External Drain Model: 207 Bar (3000 PSI)
<b>Max. Drain Pressure</b>	34 Bar (500 PSI)
<b>Maximum Flow</b>	See Reference Chart
<b>Pilot Pressure</b>	Air Min 3.4 Bar (50 PSI) Air Max 10.2 Bar (150 PSI)
<b>Response Time</b>	Varies with pilot line size and length, pilot pressure, pilot valve shift time & flow capacity (GPM)



## Features

- Low pressure drop design.
- Hardened spools provide long life.

## Ordering Information

**D**

Directional Control Valve

**101V**

Basic Valve

NFPA D10  
CETOP 10

**A**

Air Operated Pilot

**□**

Spool

**□**

Style

**□**

Pilot Supply and Drain

**□**

Seal

Code	Type
N	Nitrile
V	Fluorocarbon

**□**

Valve Variations

Code	Description
7	Pilot Choke – Meter Out
8	Stroke Adj. 'B' End
9	Stroke Adj. 'A' End
60	Pilot Choke – Meter In
89	Stroke Adj. 'A' & 'B' Ends
90	1/4 BSPP Threads

**□**

Design Series

NOTE:  
Not required when ordering.

Valve schematic symbols are per NFPA/ANSI standards, providing flow P to A when energizing operator A. Note operators reverse sides on #8 and #9 spools. See installation information for details.

Code	Symbol
1	
2	
4	
8*	
9**	
11	

\* 8 spool has closed crossover.  
\*\* 9 spool has open crossover.

Code	Description	Symbol
B†	Sgl. operator, 2 position, spring offset. P to A and B to T in offset position.	
C	Dbl. operator, 3 position, spring centered.	
H†	Sgl. operator, 2 position, spring offset. P to B and A to T in offset position.	

† Available with 1, 2, 4 & 11 spools only.

This condition varies with spool code.

**Valve Weight:** 35.3 kg (77.8 lbs.)

**Standard Bolt Kit:** BK229

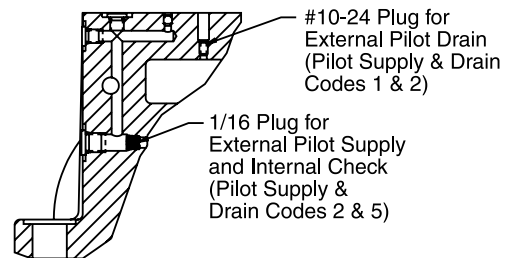
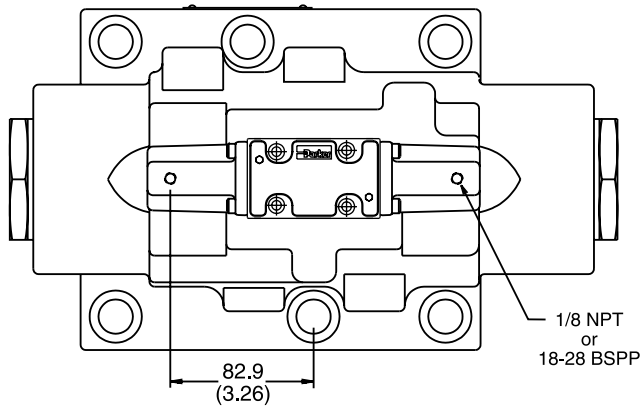
**Metric Bolt Kit:** BKM229

**Bold: Designates Tier I products and options.**

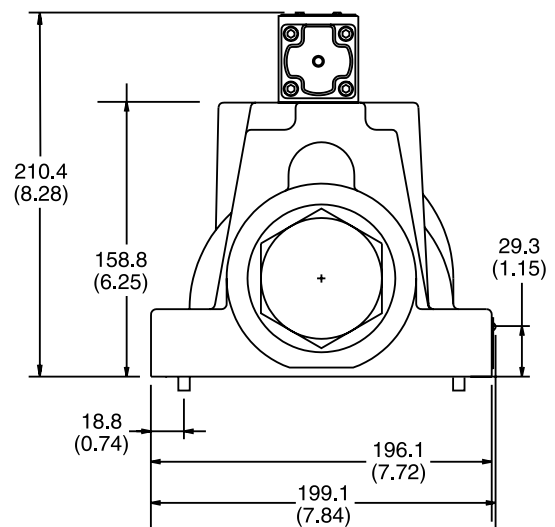
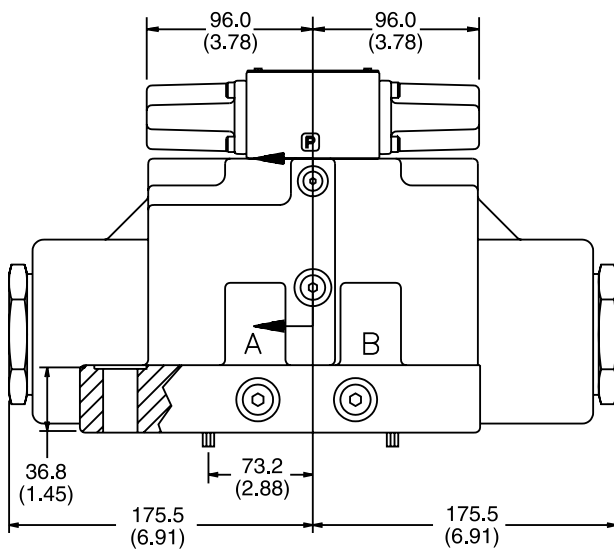
**Non-Bold: Designates Tier II products and options. These products will have longer lead times.**

D101.indd, dd

Inch equivalents for millimeter dimensions are shown in (\*\*)

**A****Air Operated**

Section A-A

**Note:** 36.83mm (1.45") from bottom of bolt hole counterbore to bottom of valve.