

## General Description

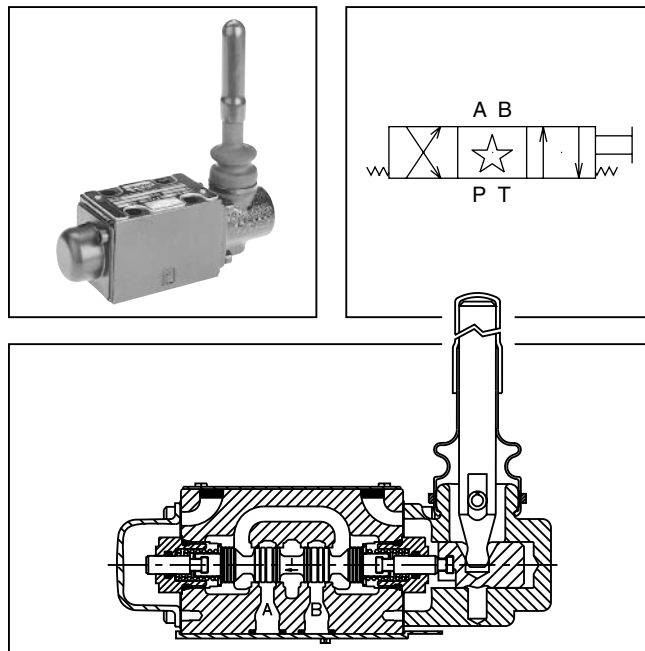
Series D1VL directional control valves are high-performance, 4-chamber, direct operated, lever controlled, 3 or 4-way valves. They are available in 2 or 3-position and conform to NFPA's D03, CETOP 3 mounting patterns.

## Features

- Spring return or detent styles available
- Heavy duty handle design

## Specifications

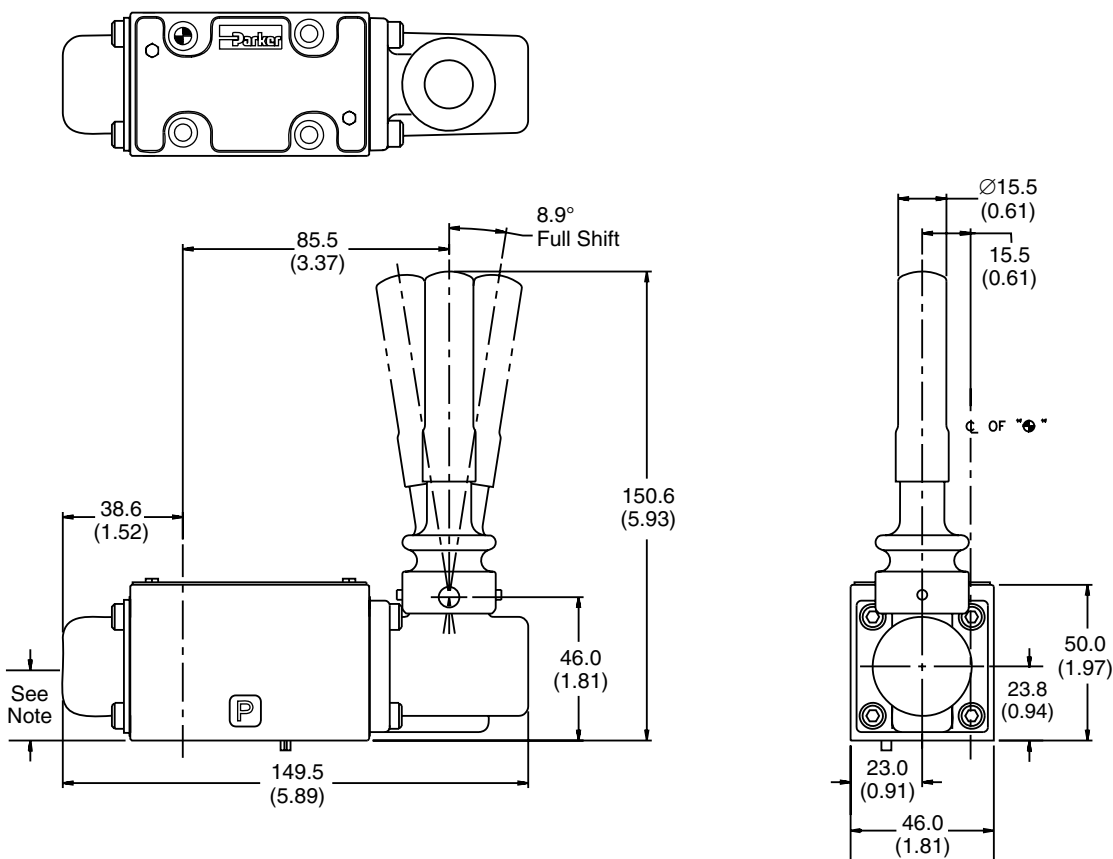
<b>Mounting Pattern</b>	NFPA D03, CETOP 3, NG 6
<b>Maximum Pressure</b>	Operating: 345 Bar (5000 PSI) Tank Line: 34 Bar (500 PSI)
<b>Maximum Flow</b>	See Reference Data
<b>Force Required to Shift Lever Operator</b>	25 N (5.6 lbs)



## Dimensions

Inch equivalents for millimeter dimensions are shown in (\*\*)

### Lever Operated D1VL



**Note:** 22.0 mm (0.87") from bottom of bolt hole counterbore to bottom of valve.

2502-A1.p65, dd



D

Directional Control Valve

1V

Basic Valve

NFPA D03  
CETOP 3

Operator Type and Location

Spool

Style

Seal Compound

Variations

Design Series

NOTE:  
Not required when ordering.

Code	Description
Omit	Standard
P10*	Monitor Switch

\* Not available on C,D or N styles.  
Not CE or CSA approved.

		Operator Location (A or B Port End)						
		Operator Type		For Valve Style				
Code		B	C	D	E	H	K	N
L	Lever (Standard)	B	B	B	A	B	B	B
LB	Lever (Alternate)	A	A	A	N/A	A	N/A	A

Code	Description
N	Nitrile
V	Fluorocarbon

Code	Symbol
1	
2	
4	
8*	
9†	
81*	
82	

\* 8 and 81 spools have closed crossover.  
† 9 has open crossover.

Code	Description	Symbol
B	Two position, spring offset. P to A and B to T in offset position.	
C	Three position, spring centered.	
D	Two position, detent.	
E	Two position, spring centered. P to B and A to T in shifted position.	
H	Two position, spring offset. P to B and A to T in offset position.	
K	Two position, spring centered. P to A and B to T in shifted position.	
N	Three position, detent.	

This condition varies with spool code.

Valve schematic symbols are per NFPA/ANSI standards, providing flow P to A when energizing operator A. Note flow paths reverse sides for #8 and #9 spools in three position valves.

Valve Weight:

Standard Bolt Kit:

Metric Bolt Kit:

1.60 kg (3.5 lbs.)

BK209 1–24x1.25

BKM209 M5–0.8x30mm

Grade 8 bolts required

**Bold: Designates Tier I products and options.**

**Non-Bold: Designates Tier II products and options. These products will have longer lead times.**

