



QTM5

FLOW RESTRICTOR VALVE

SERIES 10

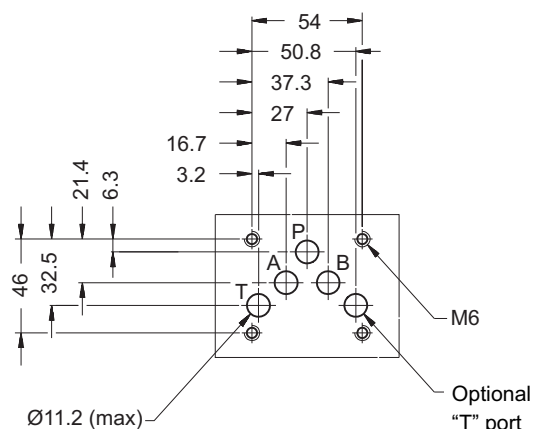
MODULAR VERSION

ISO 4401-05 (CETOP 05)

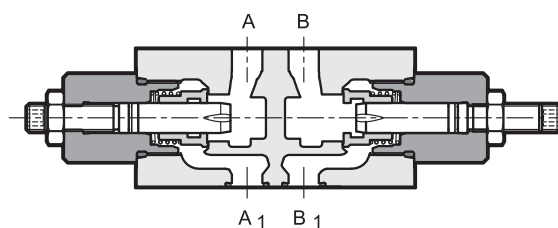
p max 350 bar
Q max 120 l/min

MOUNTING INTERFACE

ISO 4401-05-04-0-05
(CETOP 4.2-4-05)



OPERATING PRINCIPLE

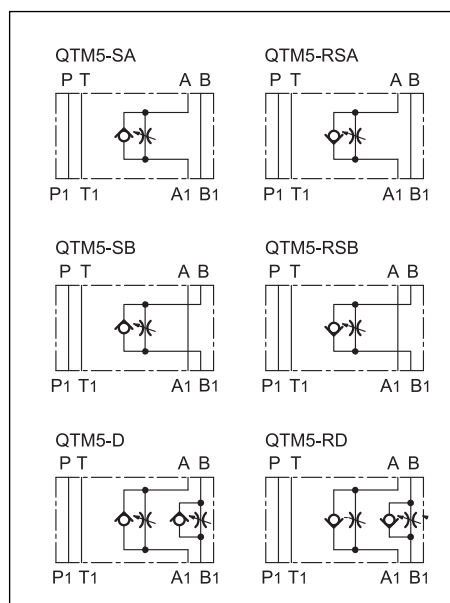


- This is a flow restrictor valve with built in check valve for reverse free flow, made as a modular version with mounting surface according to the ISO 4401 (CETOP RP 12H) standards.
- It can be assembled quickly under all ISO 4401-05 (CETOP 05) modular valves without use of pipes, using suitable tie-rods or bolts, thus forming compact modular groups.
- It is supplied with countersunk hex adjustment screw and locking nut. Rotate anticlockwise to increase the flow rate.

PERFORMANCES (measured with mineral oil of viscosity 36cSt at 50°C)

Maximum operating pressure	bar	350
Maximum flow rate	l/min	120
Cracking pressure	bar	0,5
Ambient temperature range	°C	-20 / +50
Fluid temperature range	°C	-20 / +80
Fluid viscosity range	cSt	10 ÷ 400
Recommended viscosity	cSt	25
Fluid contamination degree	According to ISO 4406:1999 class 20/18/15	
Mass: QTM5-SA, -SB, -RSA, -RSB	kg	2,3
QTM5-D, -RD		2,5

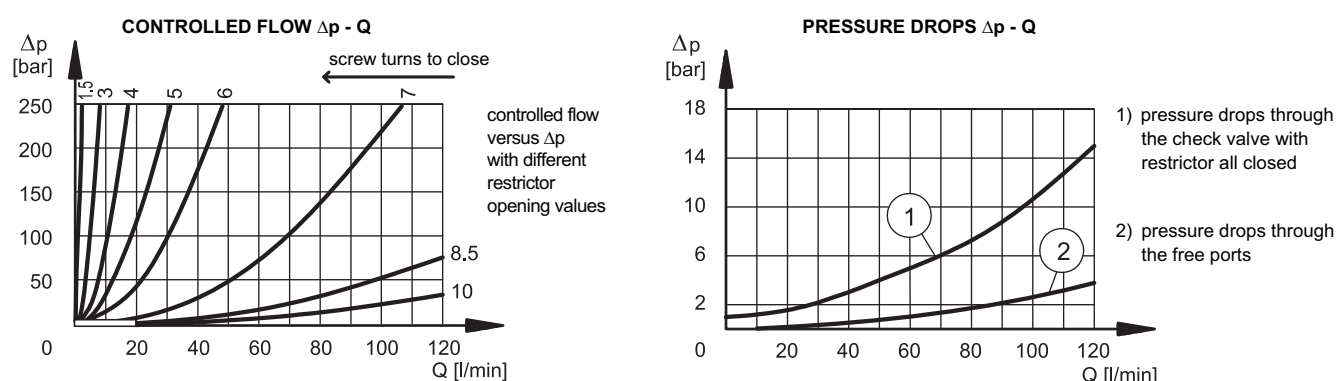
HYDRAULIC SYMBOLS



1 - IDENTIFICATION CODE

<div> <div>Q</div> <div>T</div> <div>M</div> <div>5</div> <div>-</div> <div>/</div> <div>10</div> <div>/</div> <div></div> <div></div> </div>									
Flow restrictor valve					S = adjustment screw (standard) K1 = adjustment knob				
Modular version					Seals: N = Seals in NBR for mineral oils (standard) V = Seals in FPM for special fluids				
ISO 4401-05 (CETOP 05) size					Series No. (the overall and mounting dimensions remain unchanged from 10 to 19)				
Versions for meter-out: D = control on lines A and B SA = control on line A SB = control on line B					Versions for meter-in: RD = control on lines A and B RSA = control on line A RSB = control on line B				

2 - CHARACTERISTIC CURVES (values obtained with viscosity of 36 cSt at 50°C)



3 - HYDRAULIC FLUIDS

Use mineral oil-based hydraulic fluids HL or HM type, according to ISO 6743-4. For these fluids, use NBR seals. For fluids HFDR type (phosphate esters) use FPM seals (code V). For the use of other kinds of fluid such as HFA, HFB, HFC, please consult our technical department. Using fluids at temperatures higher than 80 °C causes a faster degradation of the fluid and of the seals characteristics. The fluid must be preserved in its physical and chemical characteristics.

4 - OVERALL AND MOUNTING DIMENSIONS

