

General Description

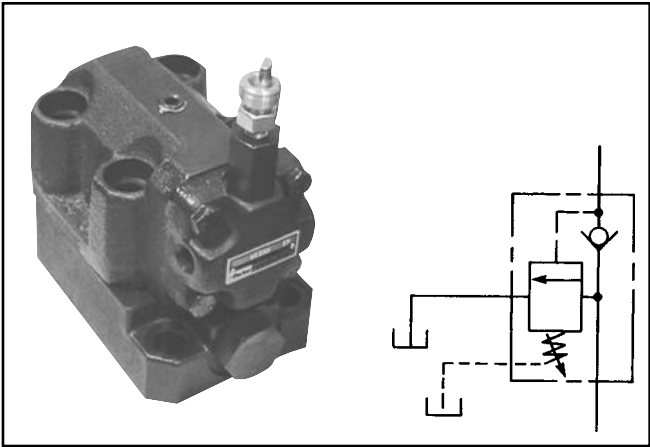
Series UR6M unloading relief valves act to limit maximum system pressure and to unload the pump at maximum pressure allowing the accumulator to maintain system pressure until pressure drops to 85 percent of maximum.

Under minimum pressure setting conditions (see Specifications), Series UR unloading relief valves function as indicated (see Performance Curves, below).

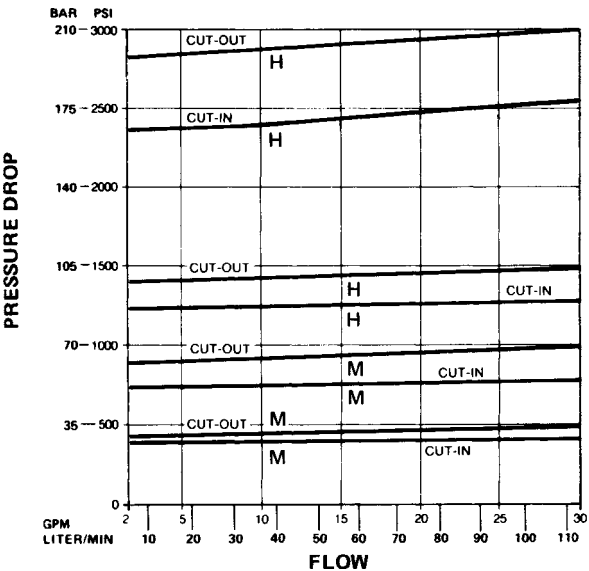
Specifications

Pressure Adjustment Range*	Code H: 55 - 205 Bar (1300 - 3000 PSI) Load/Unload PSI - 85% Code M: 10.2 - 34 Bar (150 - 500 PSI) Load/Unload PSI - 70%
Maximum Operating Pressure	205 Bar (3000 PSI)
Cracking Pressure	0.2 Bar (3 PSI) Accumulator Check Valve
Minimum Pressure Setting	113.6 LPM (30 GPM) minimum 32 cst. (150 SSU) oil and fluid temperature of 38°C (100°F) Note: Change in flow, temperature or fluid [cst. (SSU)] rating will affect valve minimum pressure.
Flow Rate	7.6 LPM (2 GPM) Minimum
Drain Conditions	0.7 Bar (10 PI) Maximum Pressure 1 LPM (0.3 GPM) Typical Flow
Drain Line	Must be run directly back to tank terminating below the oil level.

* See Ordering Information



Performance Curves

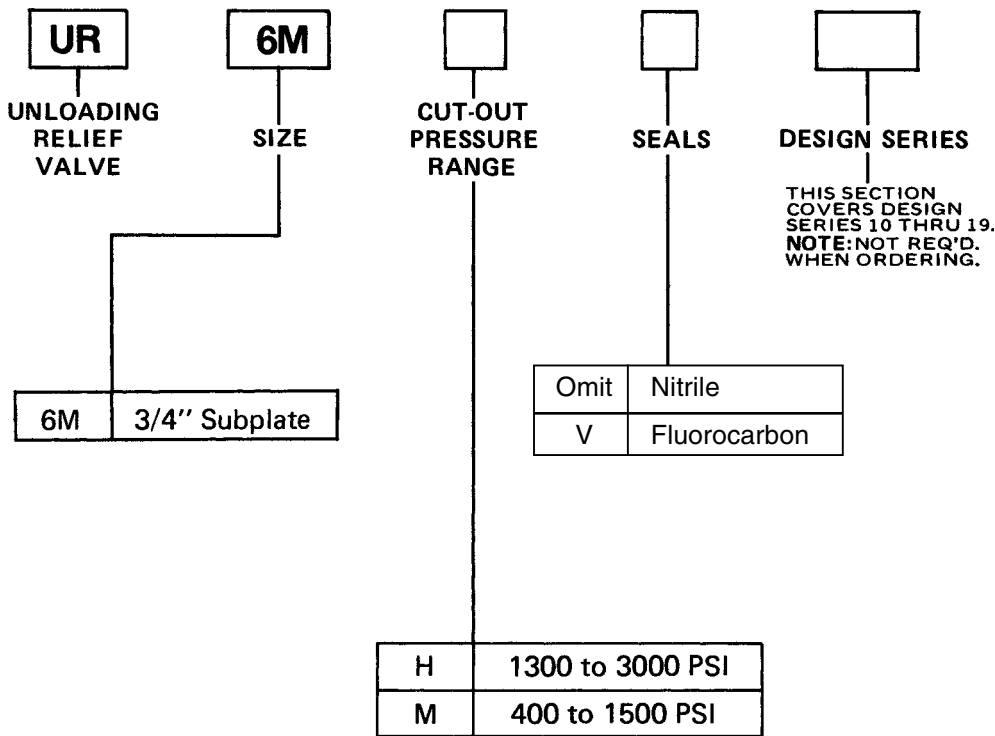


Cut-in / Cut-out Curves

Flow Data

Valve Model	Maximum Flow GPM (L/M)	Mounting Style	Port Size
UR6M	30 GPM (114 L/M)	Subplate	3/4 NPTF*

*Refers to subplate port size.



Weight:
UR6M 11.3 kg (25 lbs.)

H

Dimensions**Pressure Control Valves
Series UR6M**

Millimeter equivalents for inch dimensions are shown in (**)

Manifold mounted Unloading Valve