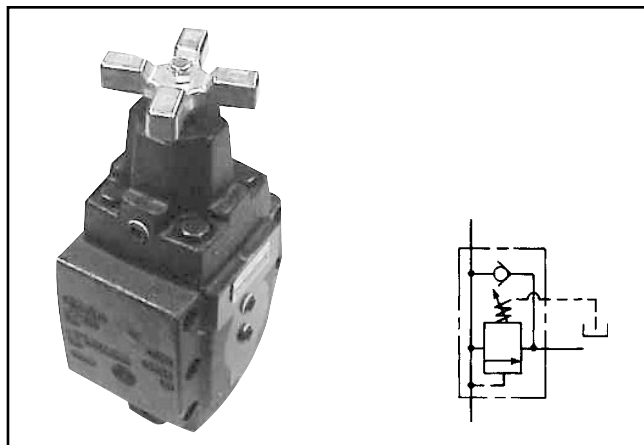


General Description

Series S sequence valves function as pressure sensitive logic valves in as much as they permit flow only after a pilot pressure signal reaches the valve and is sustained.

Series S sequence valves are available with by-pass check option. This feature permits reverse flow, thus, flow in one direction is accompanied by proper valve sequencing and flow in the reverse direction by-passes the sequencing function.

The 1 1/4" Series S sequence valve has an auxiliary pilot port which will open the valve at low pressure. The low pressure override feature can be advantageous in certain applications.



Specifications

Pressure Adjustment Range*	3/8" and 3/4" Valves: Code L: 10.2 - 17 Bar (150 - 250 PSI) Code B: 10.2 - 34 Bar (150 - 500 PSI) Code M: 10.2 - 68 Bar (150 - 1000 PSI) Code F: 10.2 - 136 Bar (150 - 2000 PSI) Code H: 10.2 - 205 Bar (150 - 3000 PSI)	Minimum Pressure Setting	10.2 Bar (150 PSI) minimum flow at maximum (except 1 1/4" size), 32 cst. (150 SSU) oil and fluid temperature of 38°C (100°F)
	1 1/4" Valves: Code H: 68 - 205 Bar (1000 - 3000 PSI) Code F: 34 - 136 Bar (500 - 2000 PSI) Code M: 14 - 68 Bar (200 - 1000 PSI) Code B: 7 - 34 Bar (100 - 500 PSI) Code L: 3.4 - 17 Bar (50 - 250 PSI) Code Z: 1.7 - 8.5 Bar (25 - 125 PSI)		Note: Change in flow, temperature or fluid [cst. (SSU)] rating will affect valve minimum pressure.
	Maximum Operating Pressure		205 Bar (3000 PSI)
	Pilot Pressure		External or Internal from valve inlet Valve opens at adjusted setting when pilot pressure exceeds the valve setting.
		Flow Rate	3.78 LPM (1 GPM) Minimum
		Reverse Flow	By-pass check valve - optional
		Auxiliary Remote Pilot Pressure*	For: H 1/10† F 1/10 M 1/10 B 1/5 L N/A Z N/A
		Drain Line	Must be externally drained

* See Ordering Information Range Options

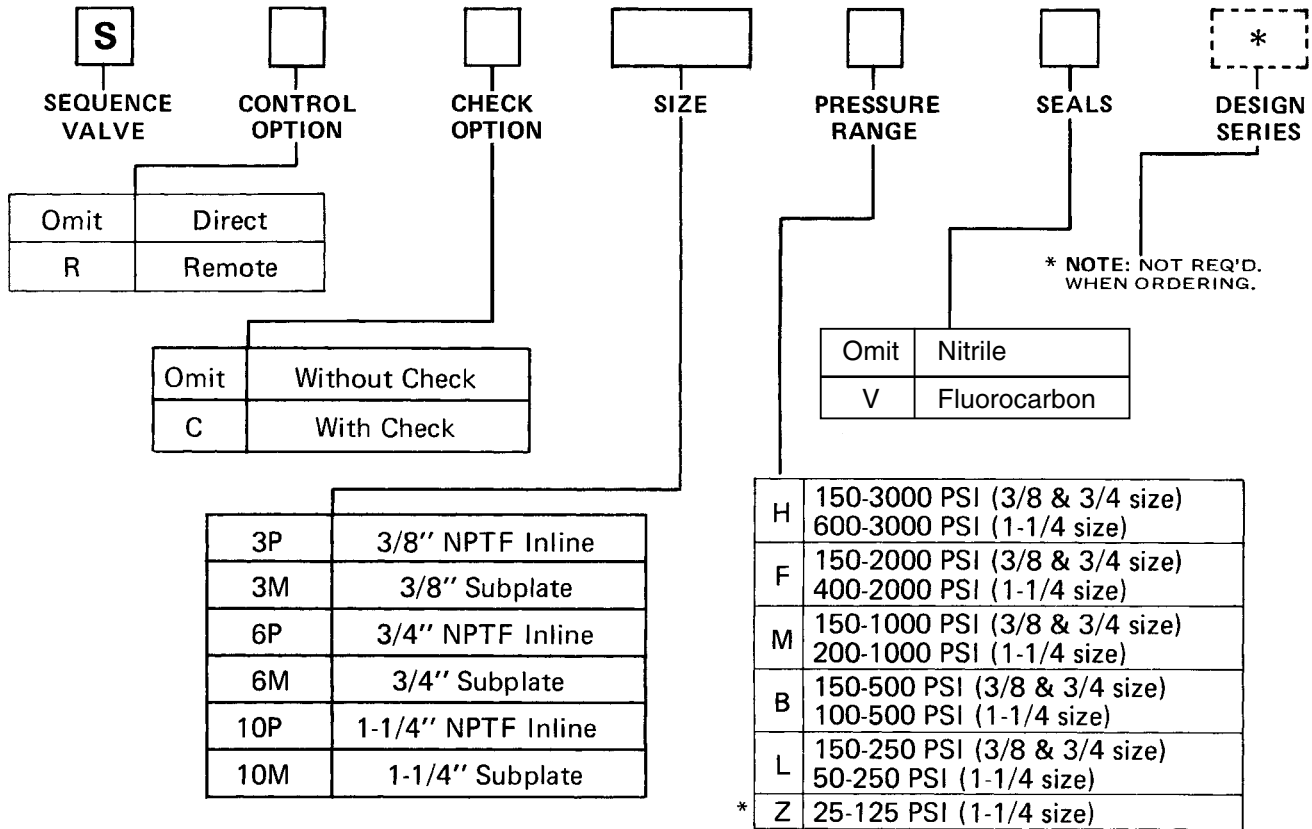
† With respect to normal setting

Flow Data

Valve Model	Max. Flow	Mounting Style	Port Size
S**3P	12 GPM (45 L/M)	Inline	3/8 NPTF
S**3M	12 GPM (45 L/M)	Subplate (NFA) P03	3/8 NPTF *
S**6P	30 GPM (114 L/M)	Inline	3/4 NPTF
S**6M	30 GPM (114 L/M)	Subplate (NFA) P06	3/4 NPTF *
S**10P	70 GPM (265 L/M)	Inline	1-1/4 NPTF
S**10M	70 GPM (265 L/M)	Subplate (NFA) P10	1-1/4 NPTF *

* Refers to subplate port size.

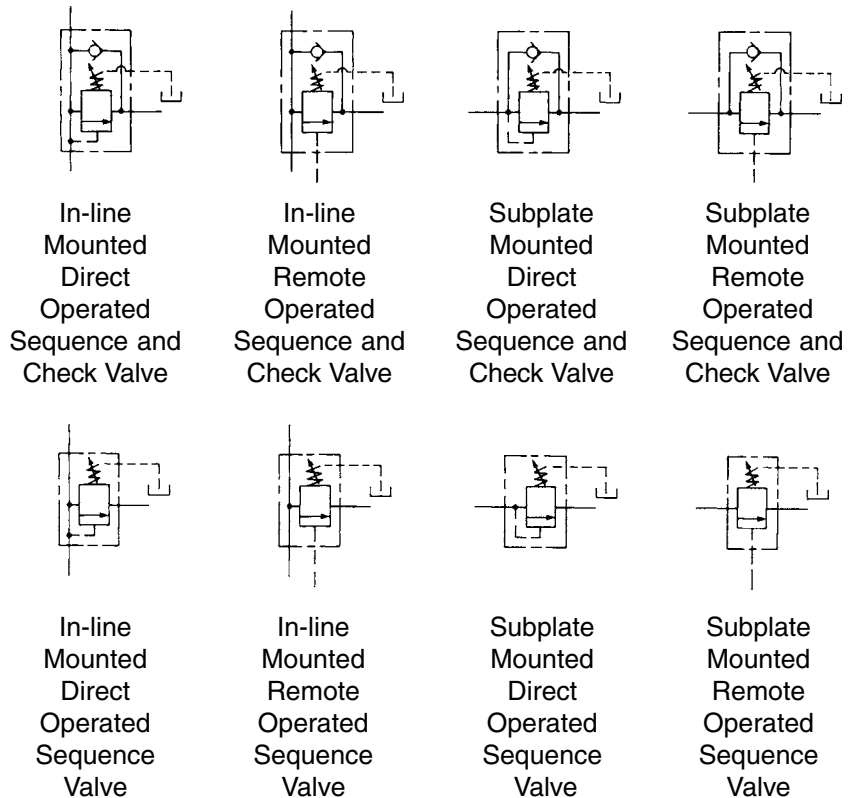




Weight:

S*3P	4.8 kg (10.5 lbs.)
S*3M	4.8 kg (10.5 lbs.)
S*6P	5.2 kg (11.5 lbs.)
S*6M	5.2 kg (11.5 lbs.)
S*10P	10.4 kg (23 lbs.)
S*10M	10.4 kg (23 lbs.)

*Not available with 3/8" and 3/4" valves.

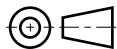
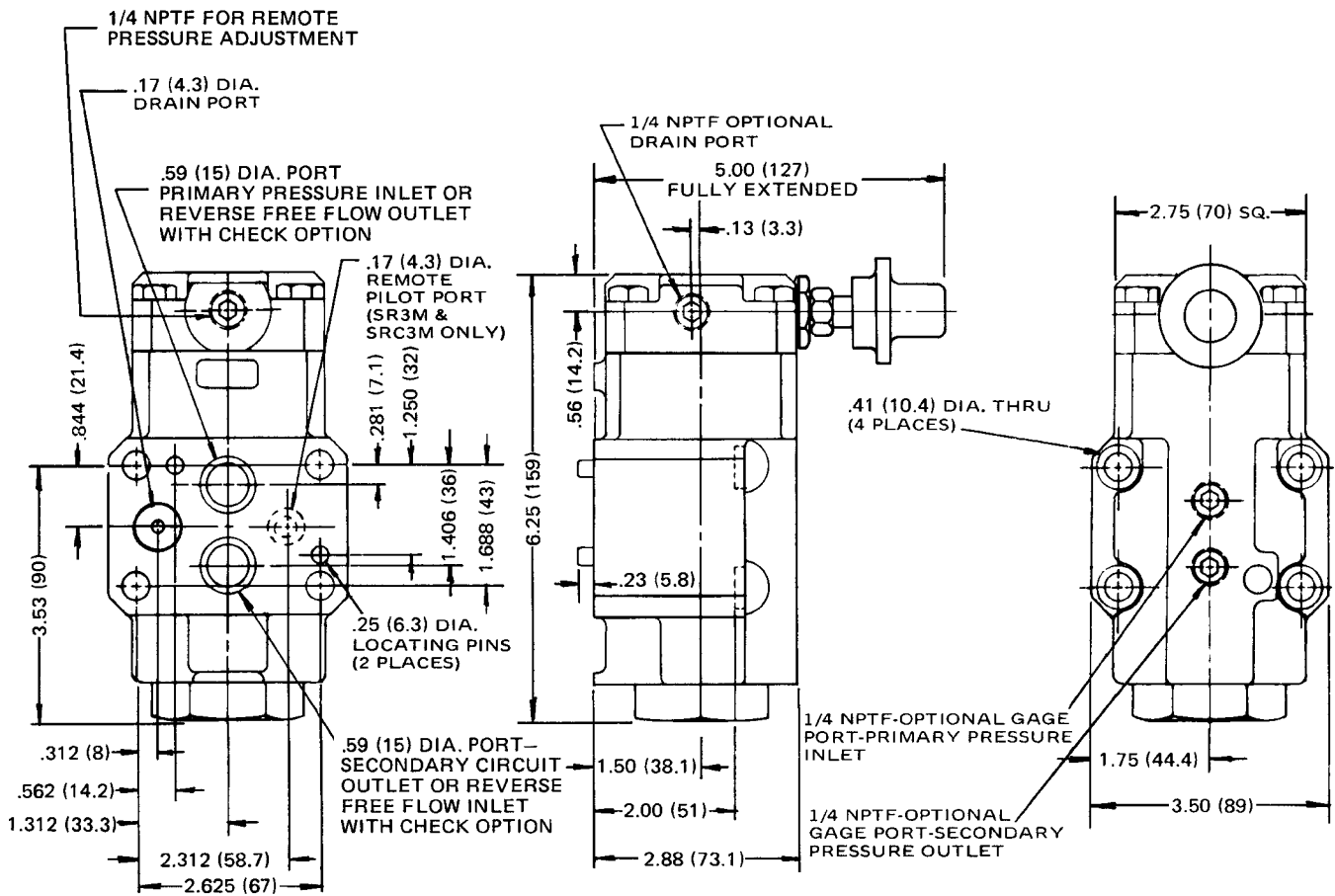
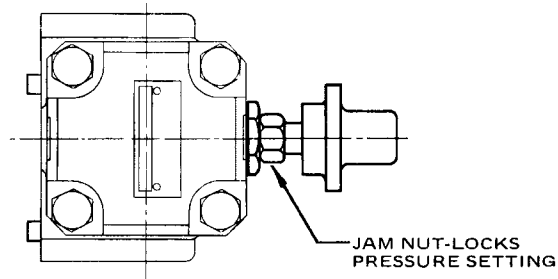


Dimensions

**Pressure Control Valves
Series S*3M**

Millimeter equivalents for inch dimensions are shown in (**)

Manifold mounted, 3/8" pilot operated
Sequence Valve

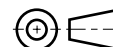
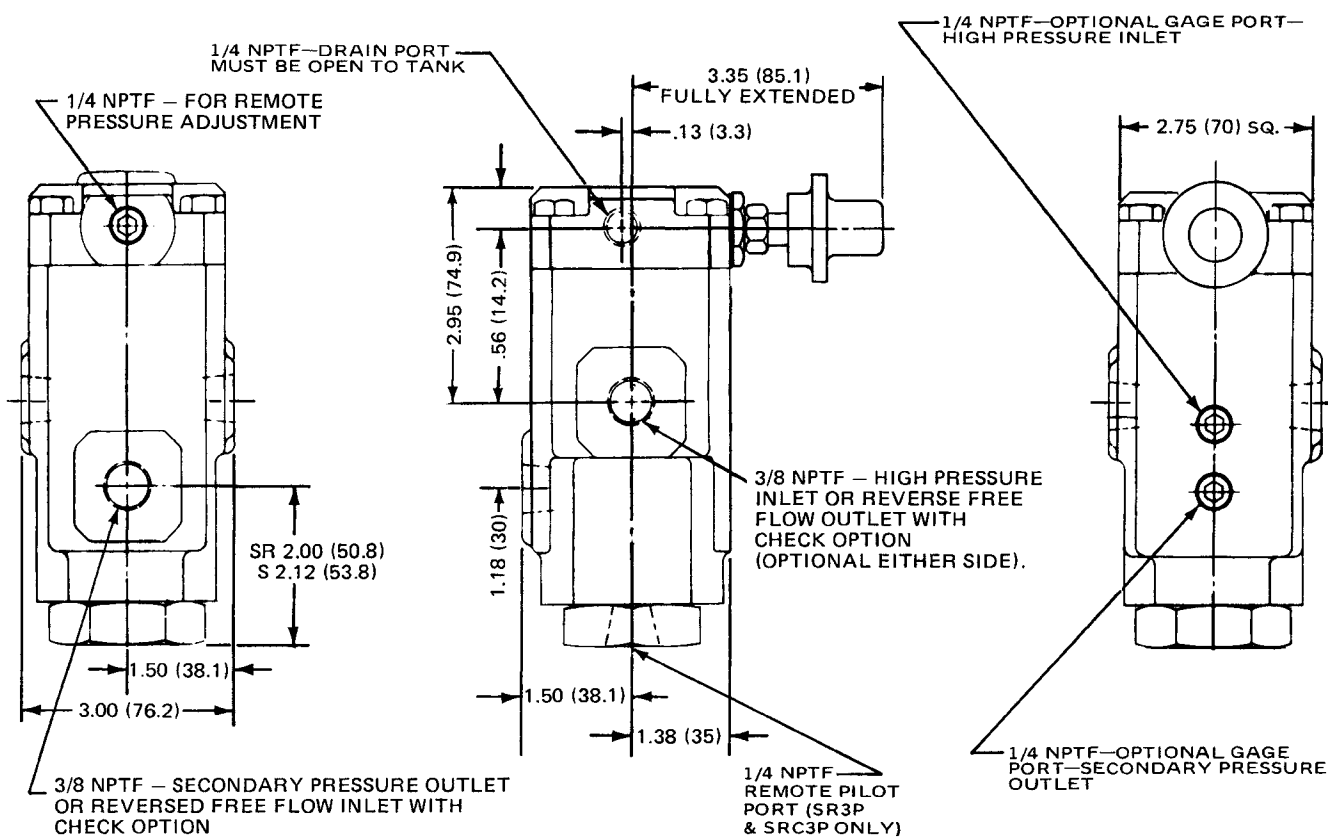
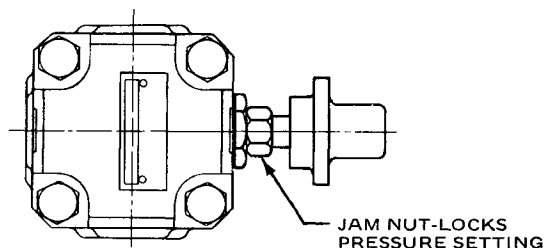


Dimensions

**Pressure Control Valves
Series S*3P**

Millimeter equivalents for inch dimensions are shown in (**)

In-line mounted, 3/8" pilot operated
Sequence Valve

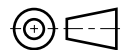
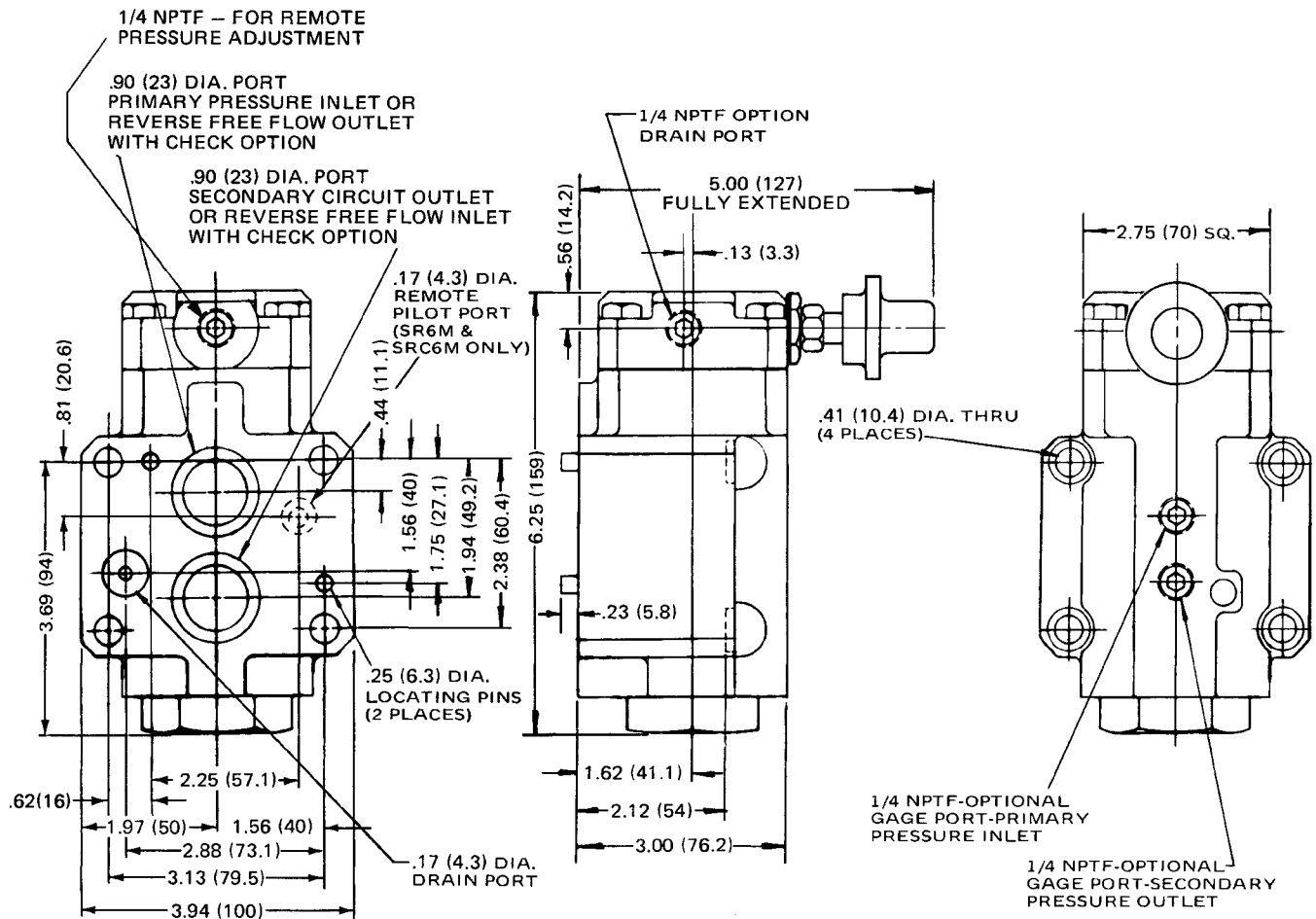
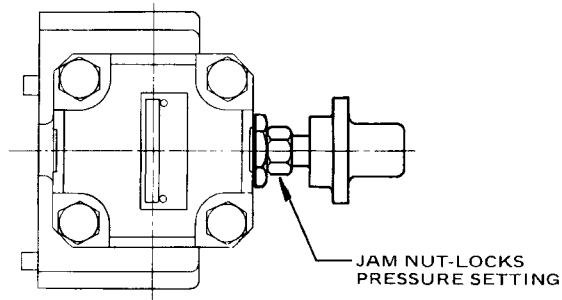


Dimensions

**Pressure Control Valves
Series S*6M**

Millimeter equivalents for inch dimensions are shown in (**)

Manifold mounted, 3/4" pilot operated
Sequence Valve

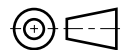
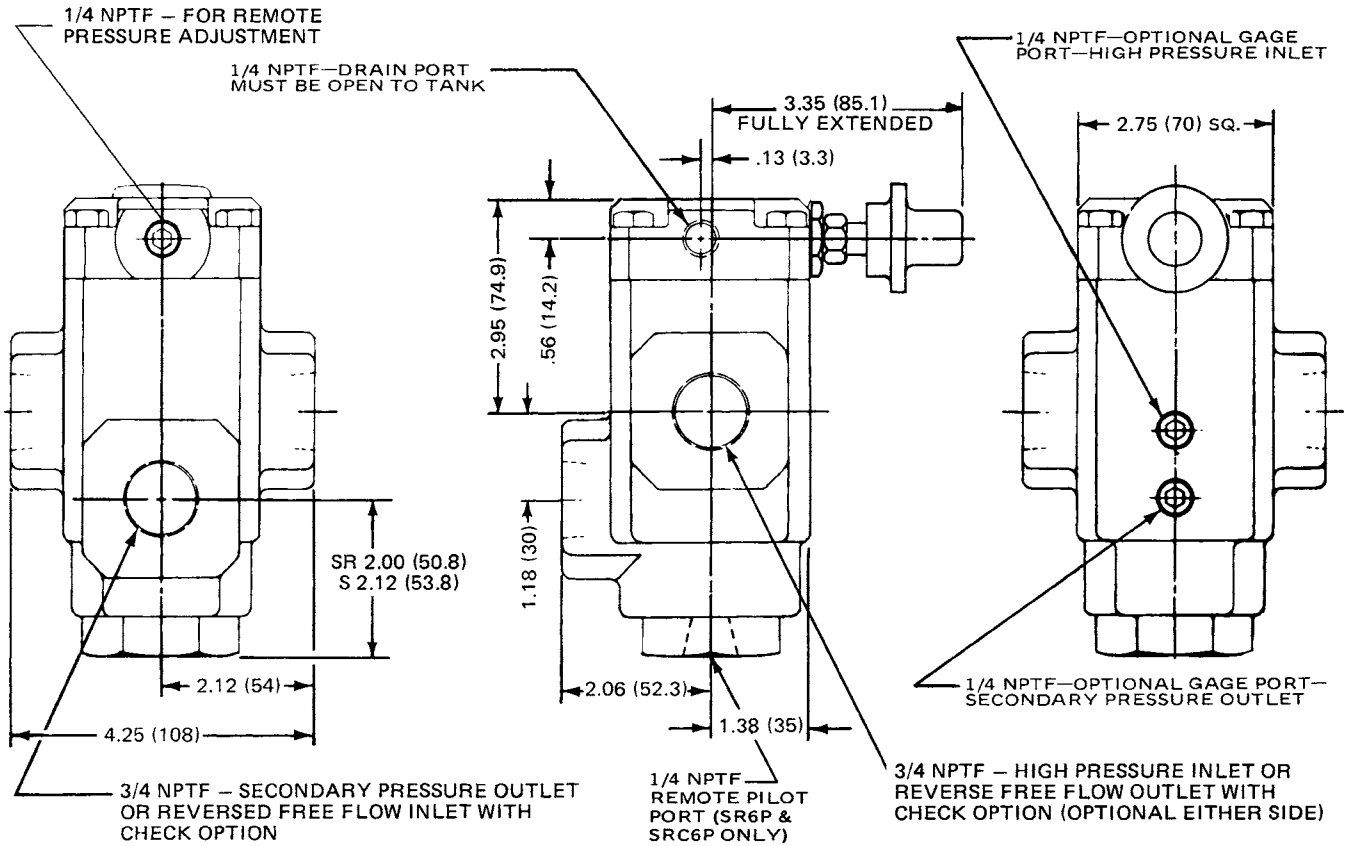
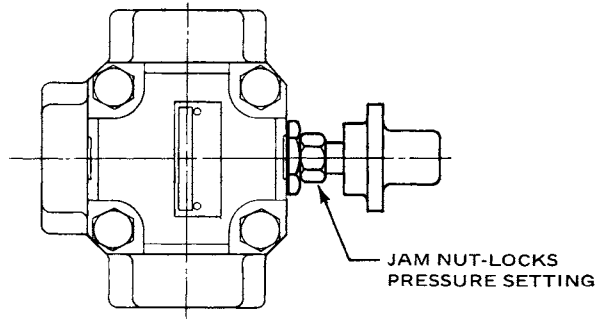


Dimensions

**Pressure Control Valves
Series S*6P**

Millimeter equivalents for inch dimensions are shown in (**)

In-line mounted, 3/4" pilot operated
Sequence Valve



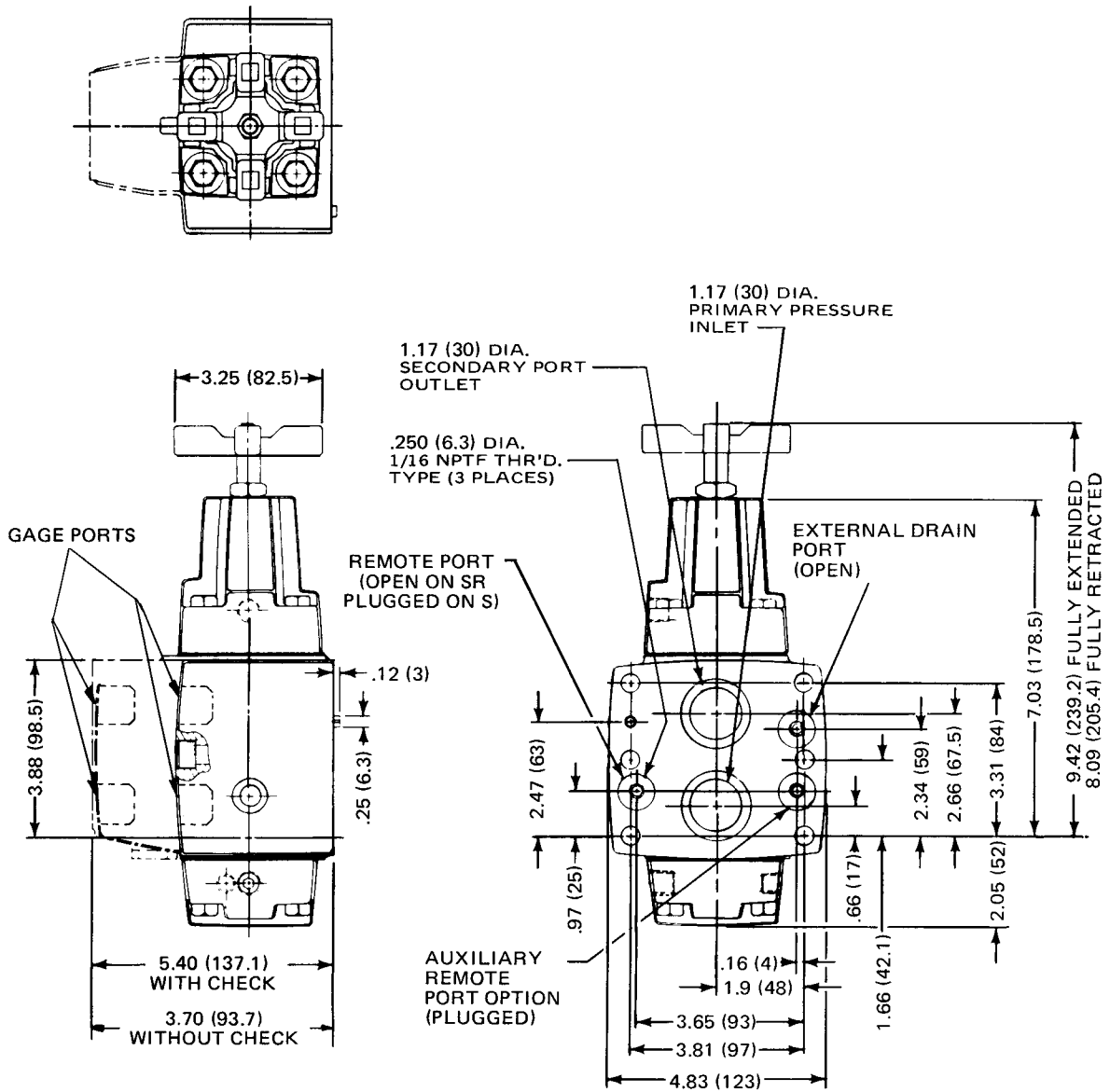
Dimensions

**Pressure Control Valves
Series S*10M, S*C10M**

Millimeter equivalents for inch dimensions are shown in (**)

S*10M — Direct Operated without Integral Check
S*C10M — Remote Operated with Integral Check

Manifold mounted, 1 1/4" Sequence Valve



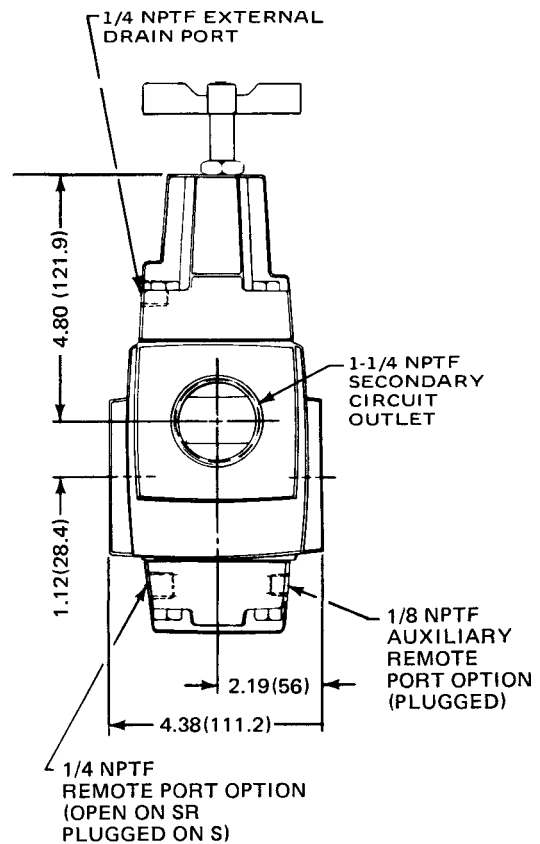
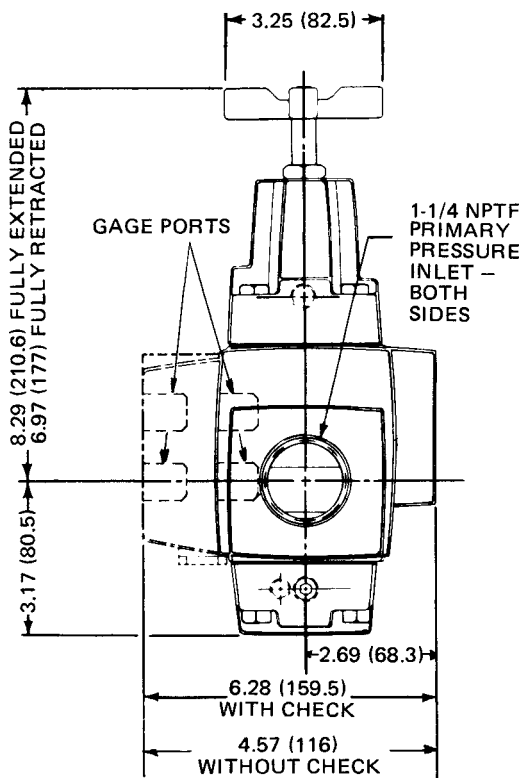
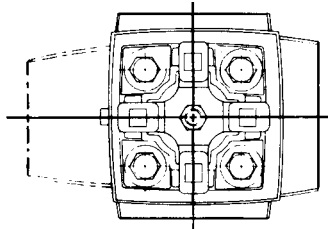
Dimensions

**Pressure Control Valves
Series S*10P, S*C10P**

Millimeter equivalents for inch dimensions are shown in (**)

S*10P — Direct Operated without Integral Check
S*C10P — Direct Operated with Integral Check

In-line mounted, 1 1/4" Sequence Valve



H