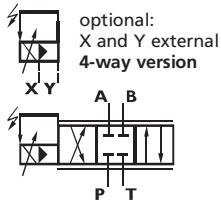


## PERFORMANCE SPECIFICATIONS FOR STANDARD MODELS

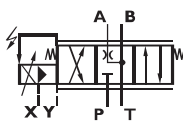
English [Metric]			D663 - . . . . L . . . B	D663 - . . . . P . . . M
Mounting Pattern			ISO 4401 - 08 - 07 - 0 - 94	ISO 4401 - 08 - 07 - 0 - 94
Valve Body Version			4-way, 2 x 2-way	4-way, 2 x 2-way
Pilot Stage			2-stage, stub shaft spool	3-stage, standard spool
Pilot Connection		selectable, internal or external	D061 Series ServoJet, 1-stage	D630 Series, 2-stage
Mass		lb [kg]	X and Y	X and Y
Rated Flow		(±10%) at $\Delta p_N = 75$ psi per land	41.9 [19.0]	43.0 [19.5]
Operating Pressure		max.	92.5 [350]	92.5 [350]
Main Stage:		port P, A, B	5,000 [350]	5,000 [350]
		port T with Y internal	2,000 [140]	3,000 [210]
		port T with Y external	5,000 [350]	5,000 [350]
Pilot Stage:		regular version	4,000 [280]	4,000 [280]
		with dropping orifice (on request)	5,000 [350]	—
		port T	2,000 [140]	3,000 [210]
Response Time*		for 0 to 100% stroke	37.0	13.0
Threshold*			< 0.1	< 0.2
Hysteresis*			< 0.5	< 1.0
Null Shift		with $\Delta T = 55$ K	< 1.0	< 1.5
Null Leakage Flow*		max. (~ critical lap)	1.5 [5.6]	1.3 [5.0]
Pilot Leakage Flow*			0.69 [2.6]	0.53 [2.0]
Pilot Flow*		for 100% step input	0.69 [2.6]	7.9 [30.0]
Main Spool Stroke			0.20 [±5.0]	0.20 [±5.0]
Spool Drive Area			0.43 [2.8]	1.77 [11.4]

\* measured at 3,000 psi [210 bar] pilot or operating pressure, respectively, fluid viscosity of 32 mm<sup>2</sup>/s and fluid temperature of 104°F [40°C]

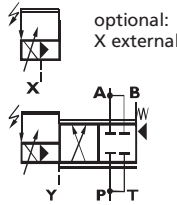


4-way version

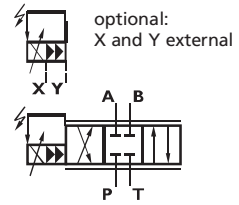
fail-safe position "M" if  $p_x \leq 1$  bar, only with X and Y external



4-way version spring centered



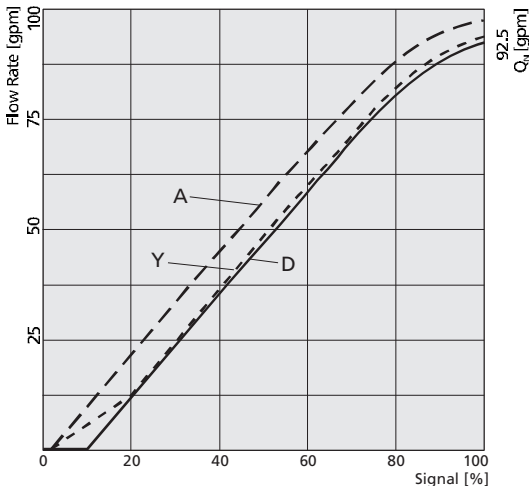
2 x 2-way version



4-way version 3-stage valve

## PERFORMANCE SPECIFICATIONS FOR STANDARD MODELS

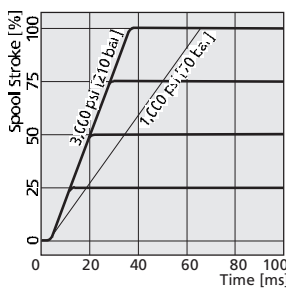
Flow vs. Signal Curve at  $\Delta p_N = 75$  psi per land [5 bar]



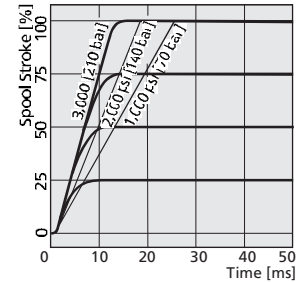
Spool version A: ~critical lap, linear characteristic  
 Spool version D: 10% overlap, linear characteristic  
 Spool version Y: ~critical lap, curvilinear characteristic

Typical characteristic curves measured at 3,000 psi [210 bar] pilot or operating pressure, fluid viscosity of 32 mm<sup>2</sup>/s and fluid temperature of 104°F [40°C]

D663 - . . . . L . . . B Step Response



D663 - . . . . P . . . M



Frequency Response

